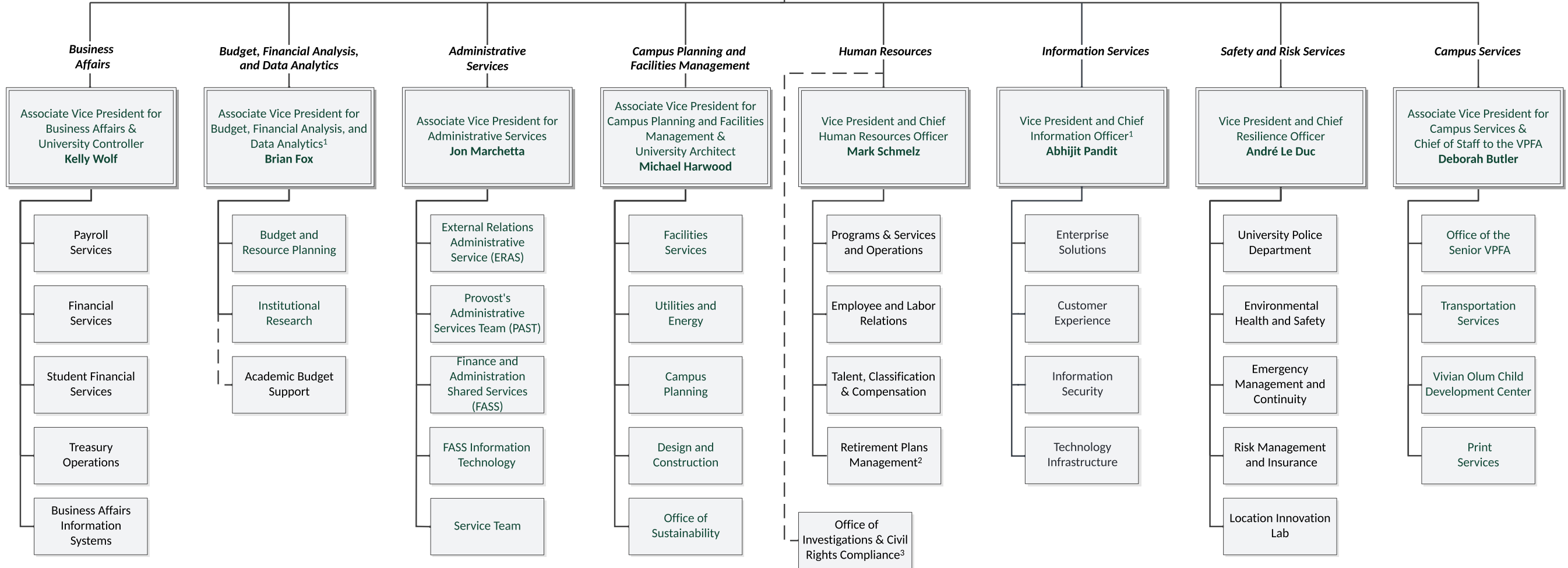
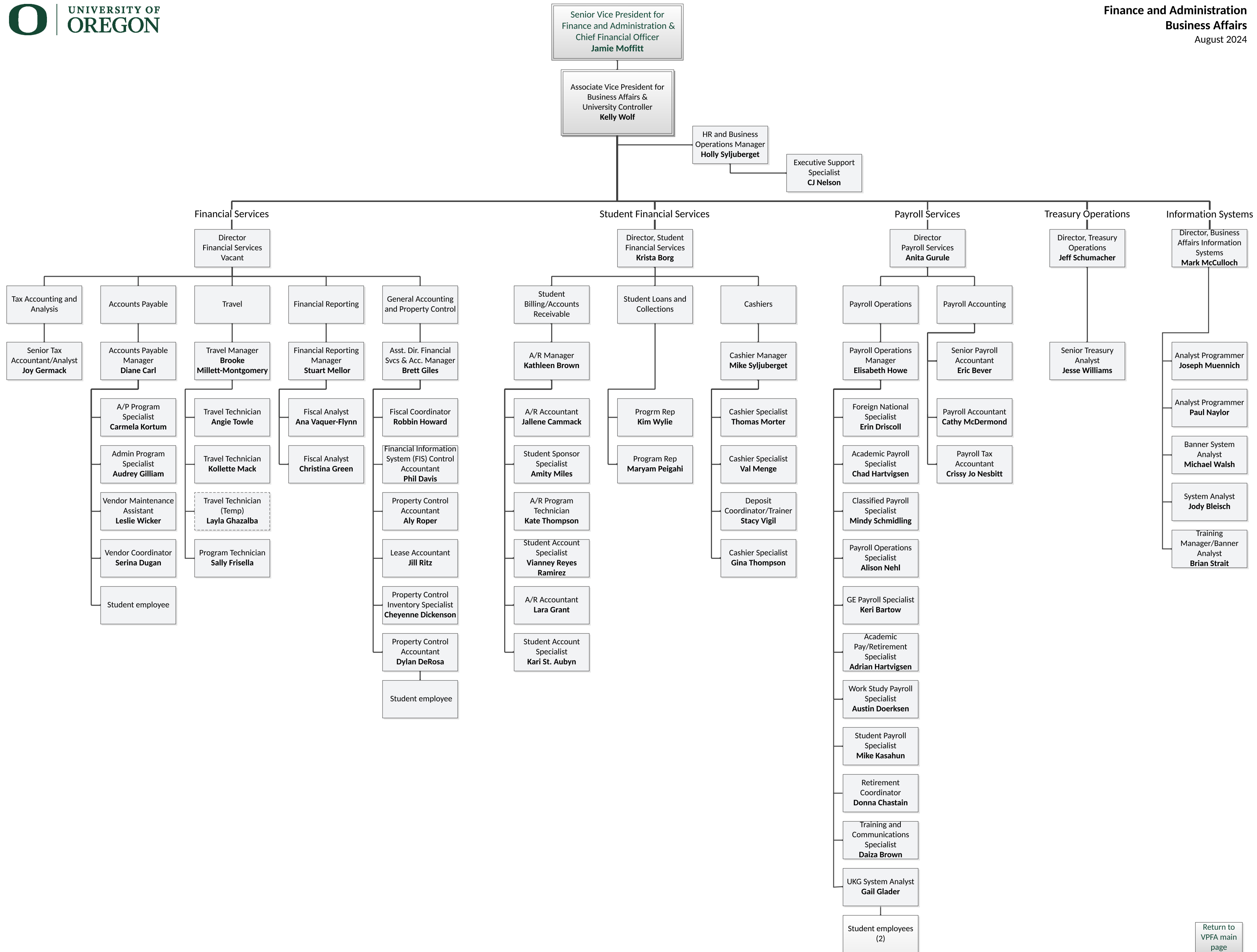
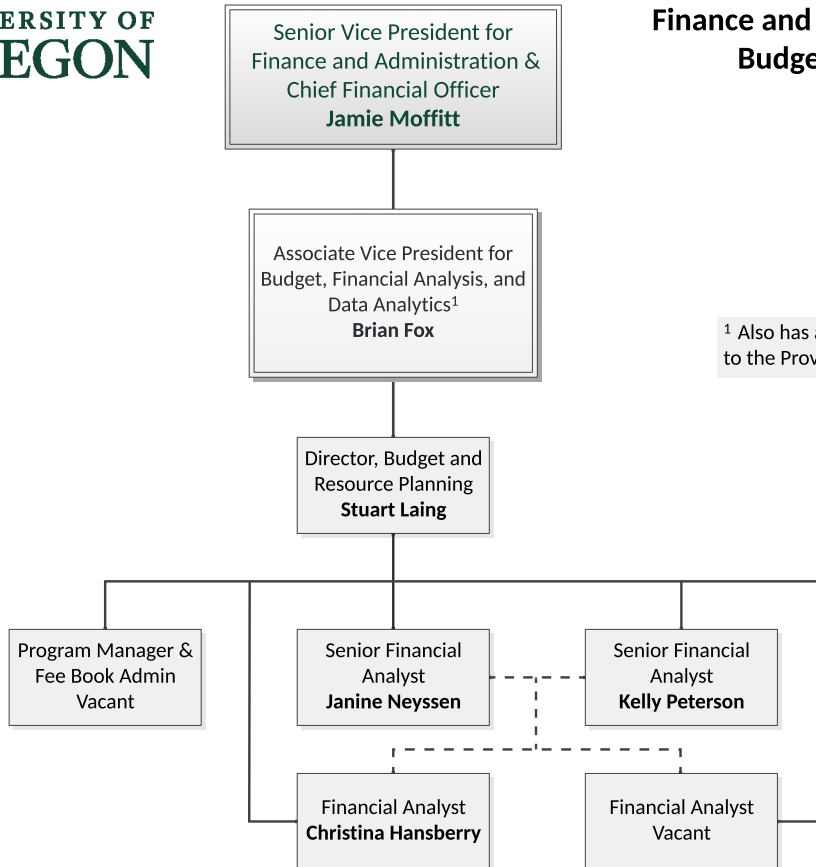


Senior Vice President for
Finance and Administration &
Chief Financial Officer
Jamie Moffitt



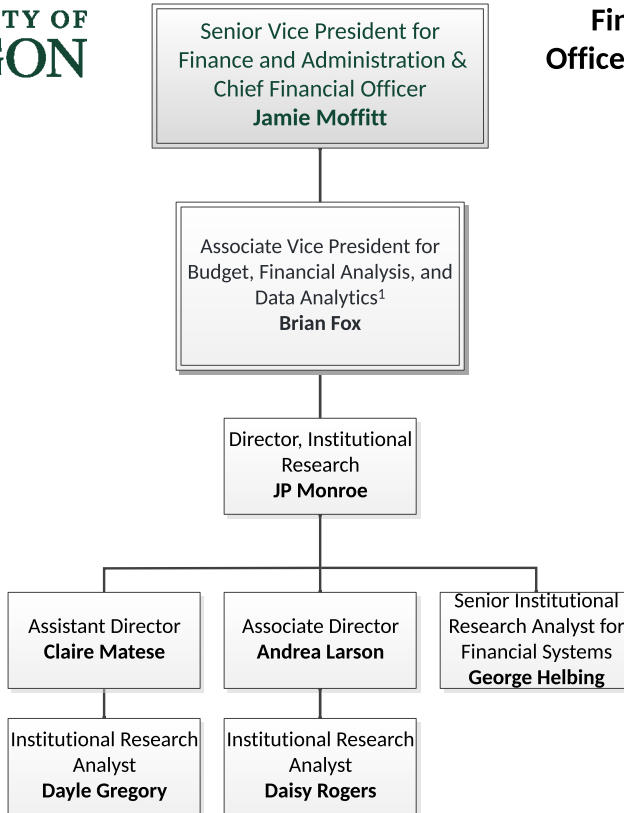
¹ Also has a dotted reporting line to the Provost's office
² Serves seven public higher education institutions in Oregon
³ Reports directly to the President



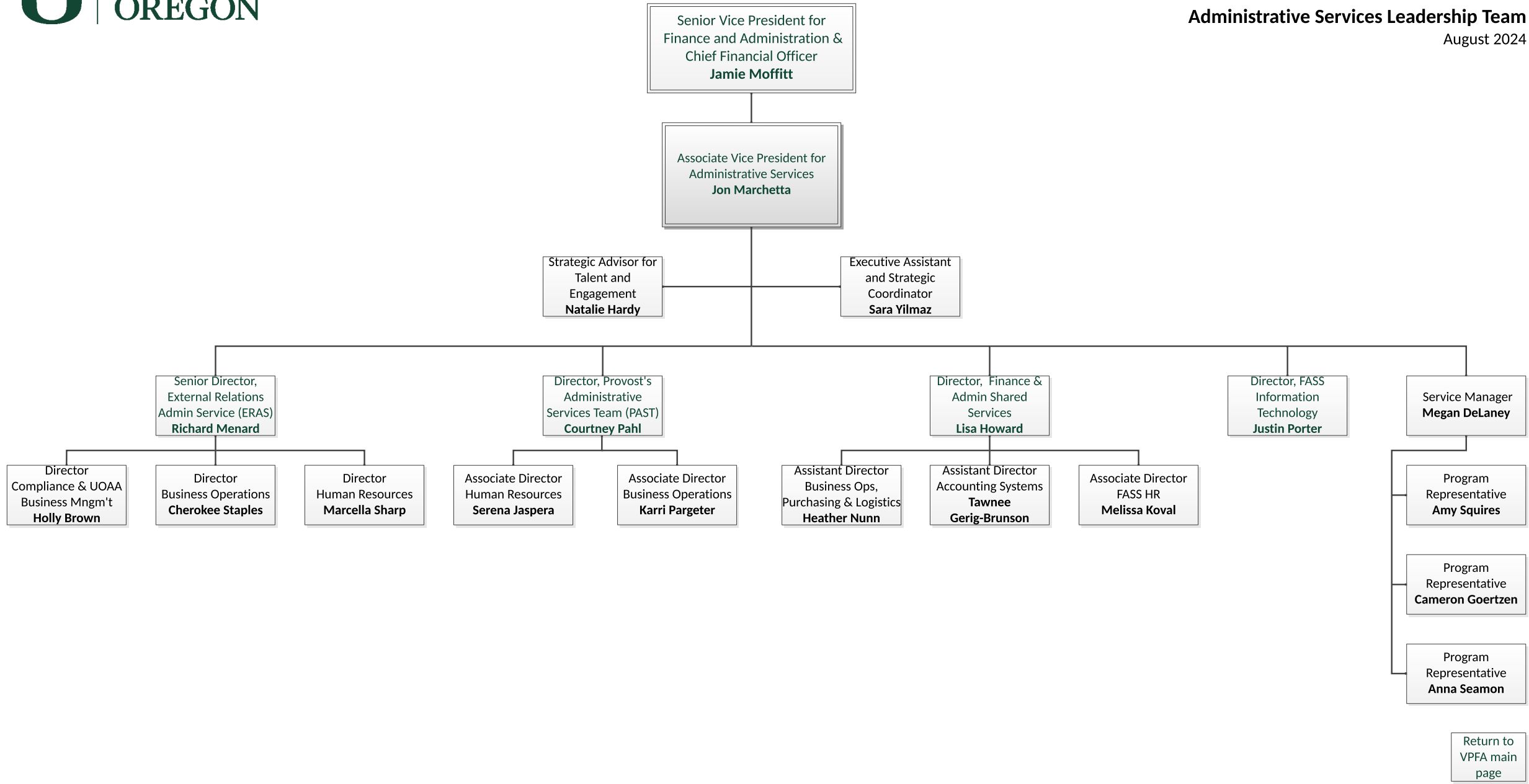


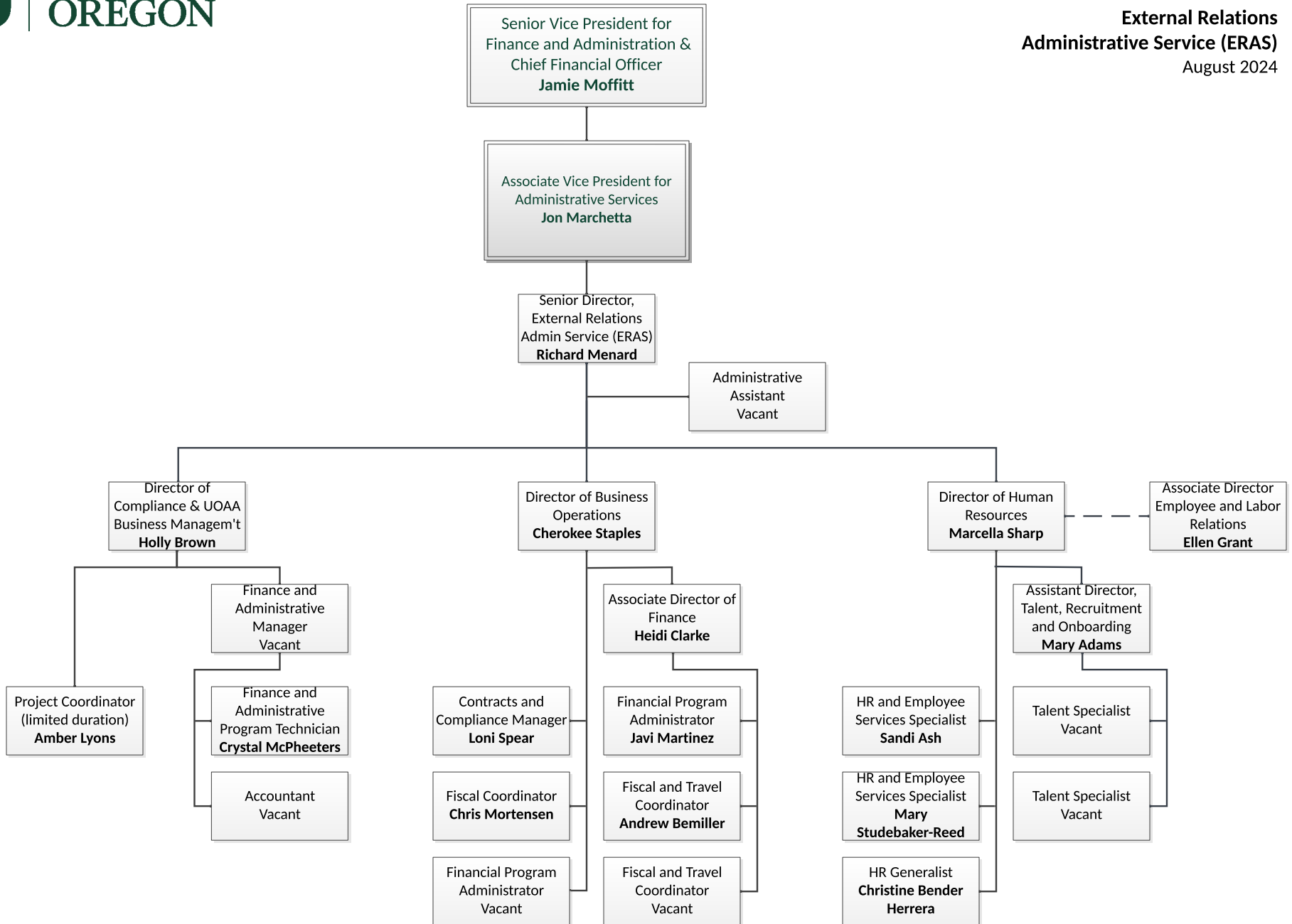
¹ Also has a dotted reporting line to the Provost's office

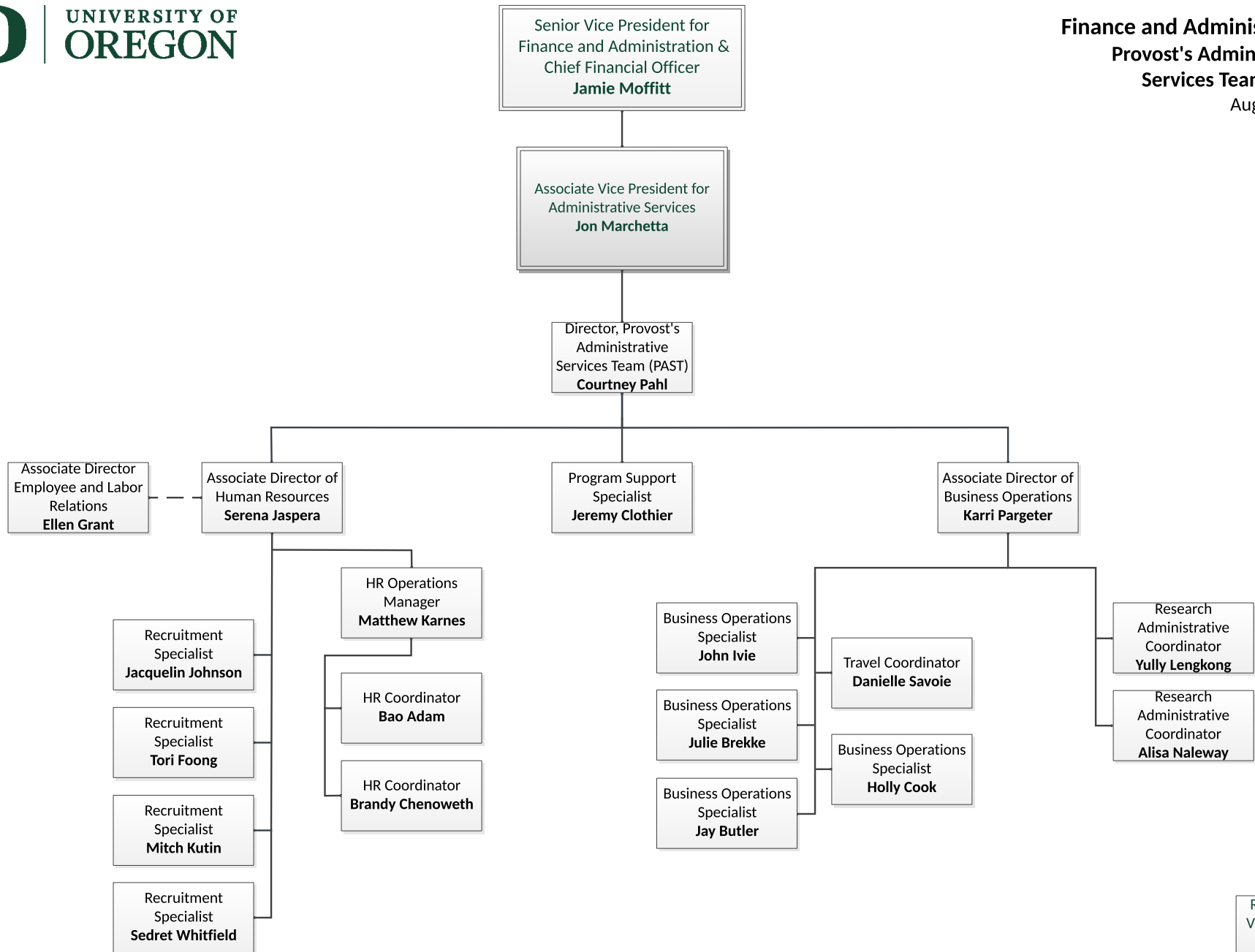
[Return to VPFA main page](#)

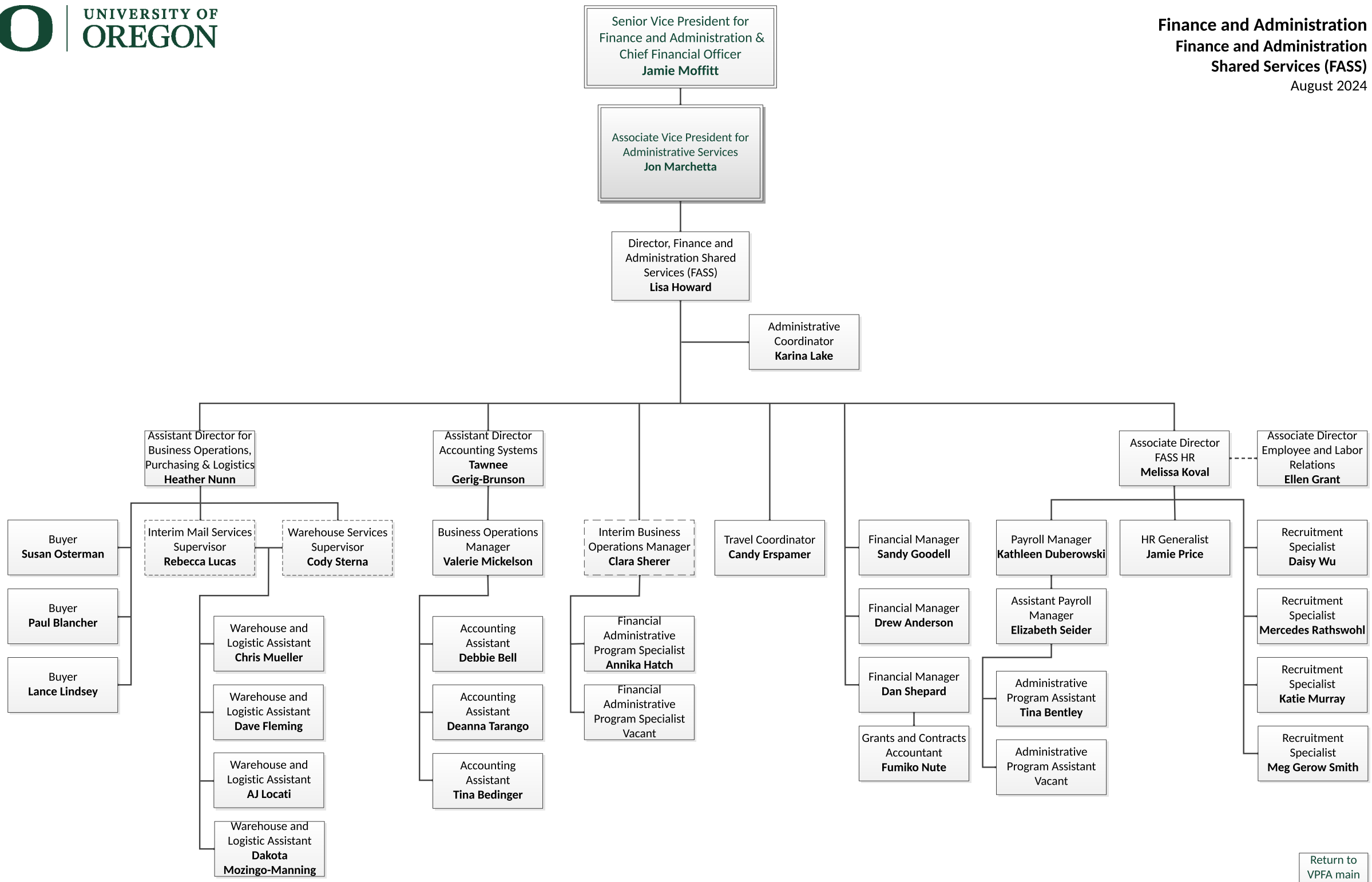


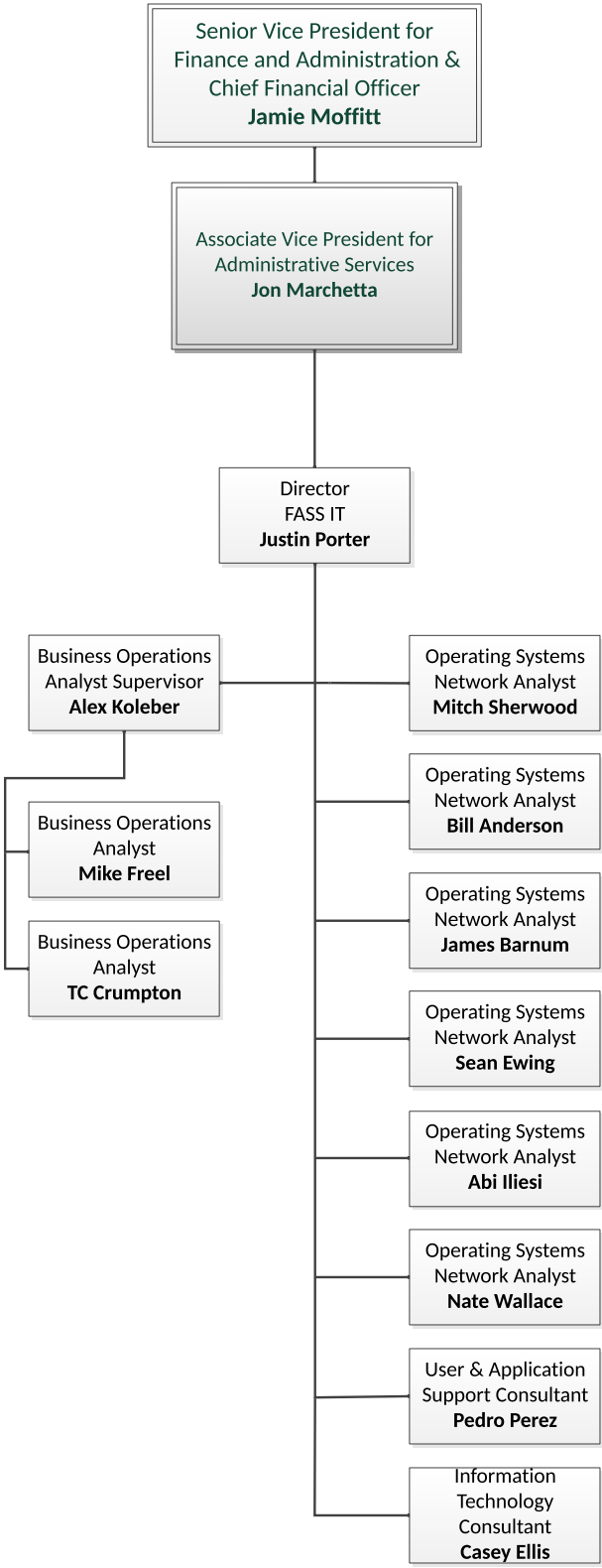
¹ Also has a dotted reporting line to the Provost's office

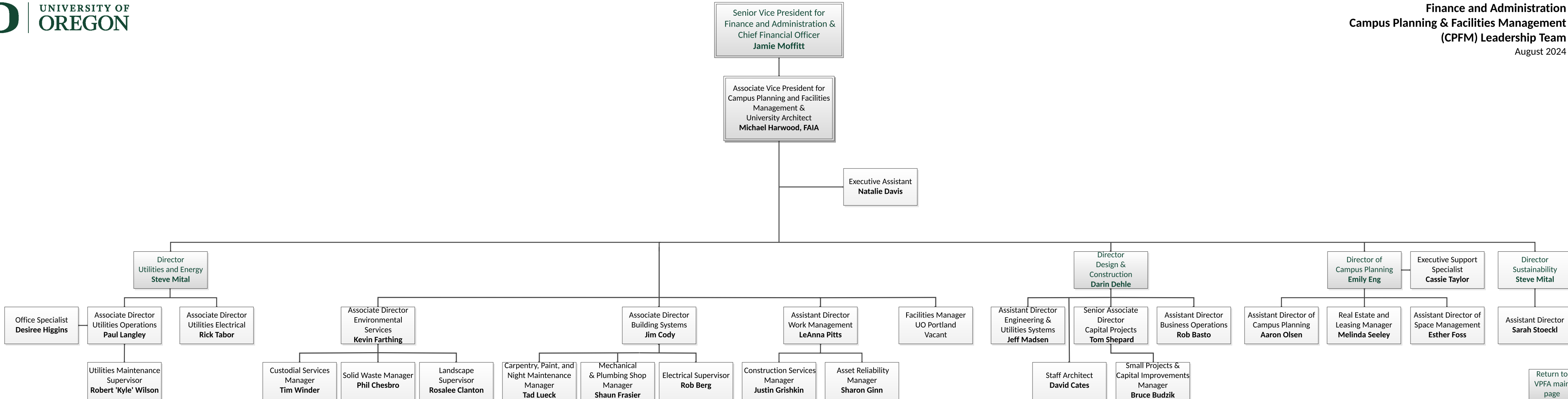


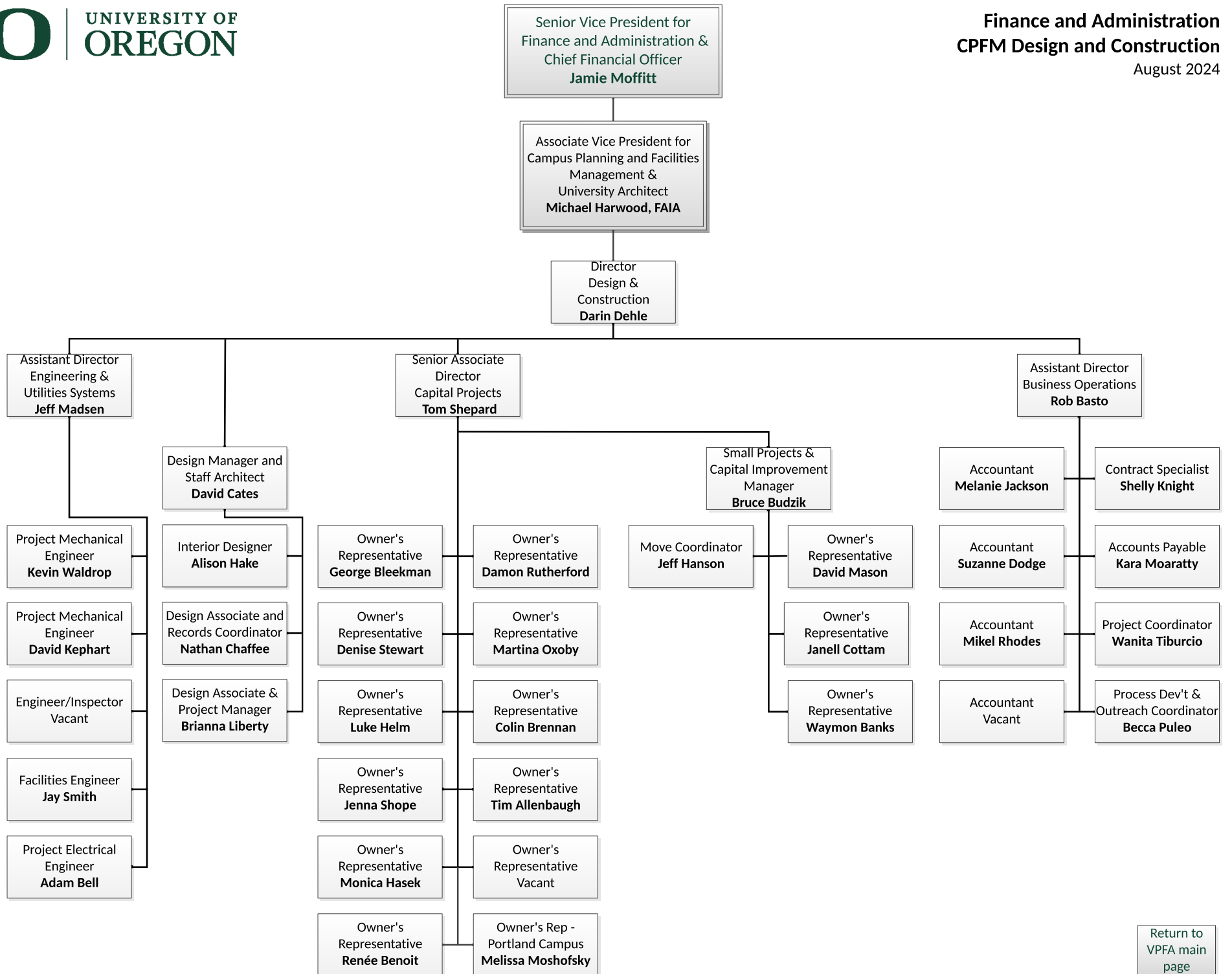


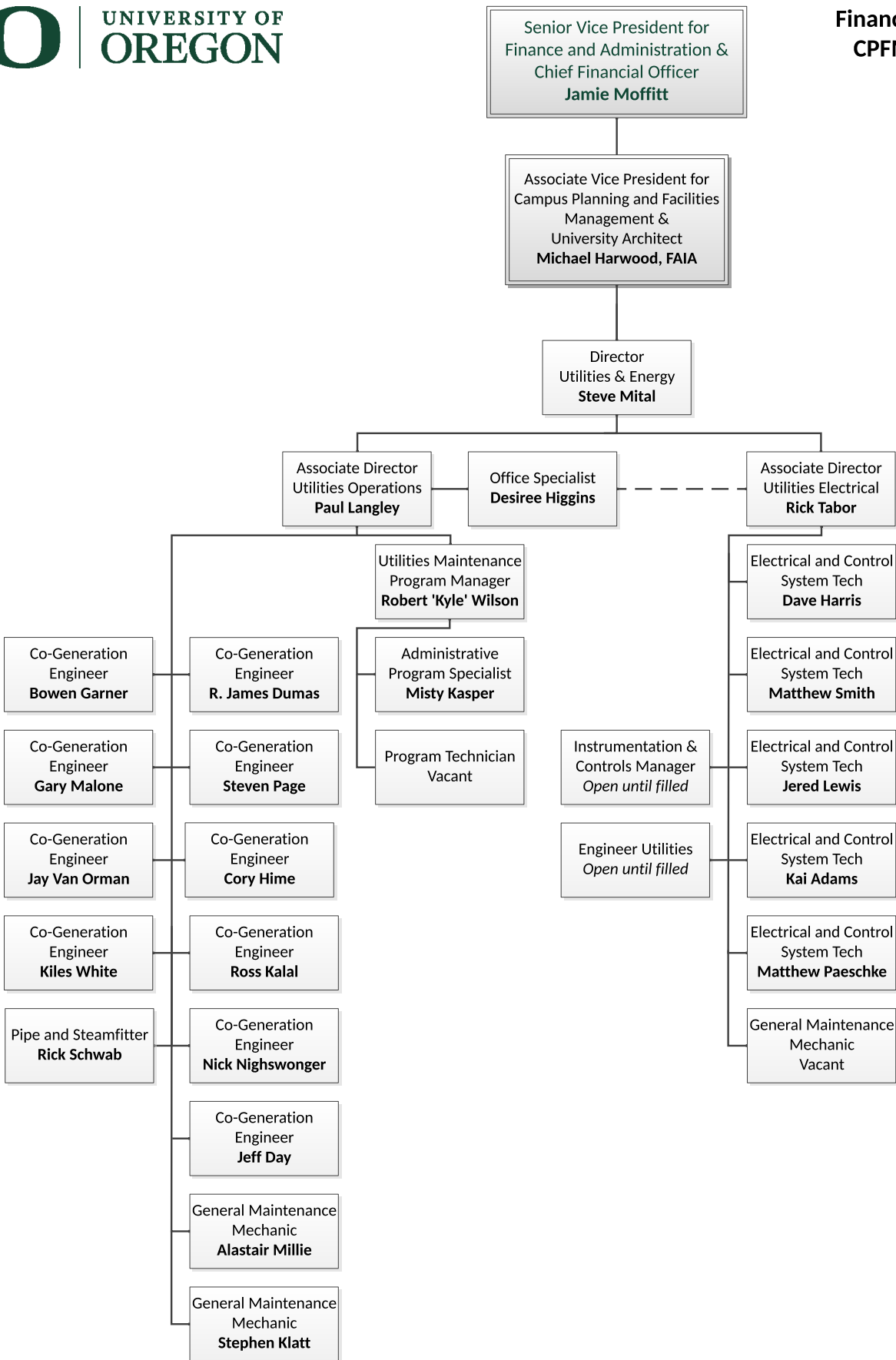


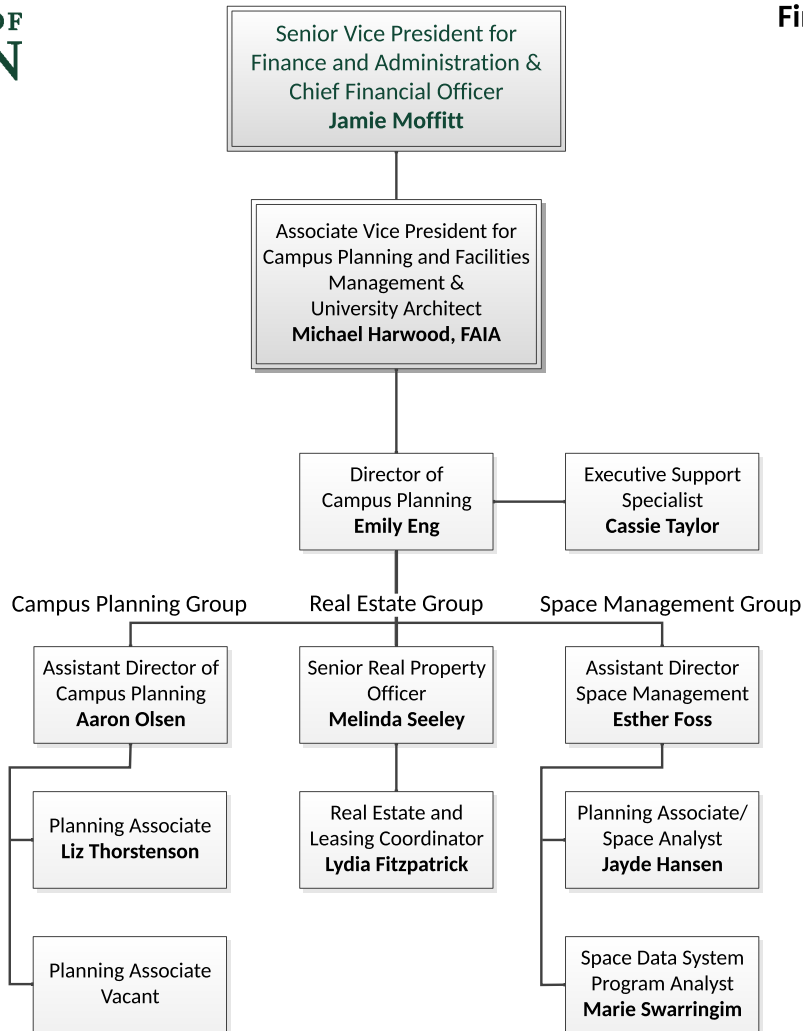












Senior Vice President for
Finance and Administration &
Chief Financial Officer
Jamie Moffitt

Associate Vice President for
Campus Planning and Facilities
Management &
University Architect
Michael Harwood, FAIA

Director
Sustainability
Steve Mital

[Return to
VPFA main
page](#)

Assistant Director
Sarah Stoeckl

Campus Natural
Areas Steward
Emily Hamblen

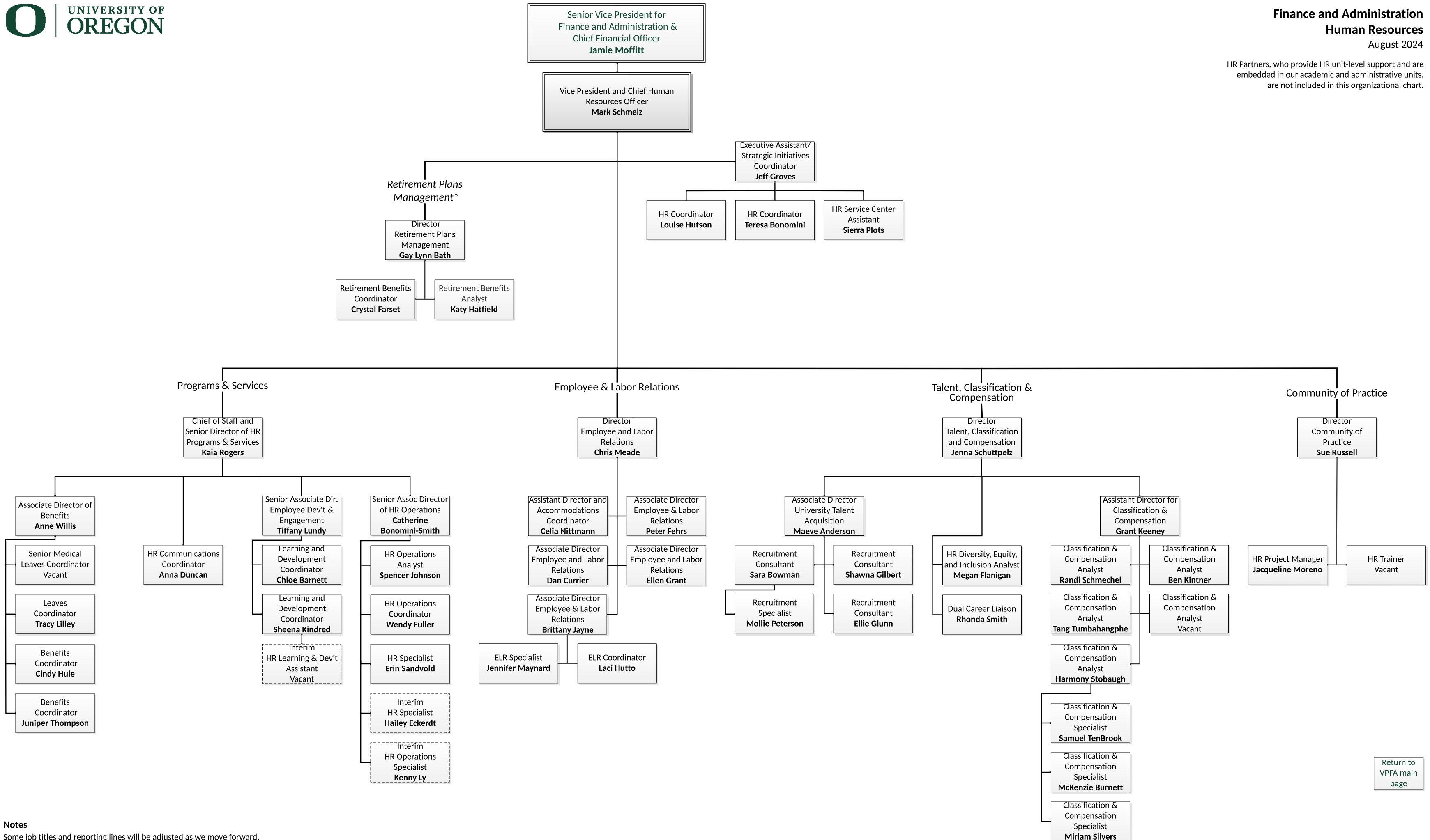
Program Coordinator
Katie Lucca

Program Assistant
Cimmeron Gillespie

Energy Analyst
Ryan Haag

Energy Program
Specialist
**Madeline
Jonas-Lowery**

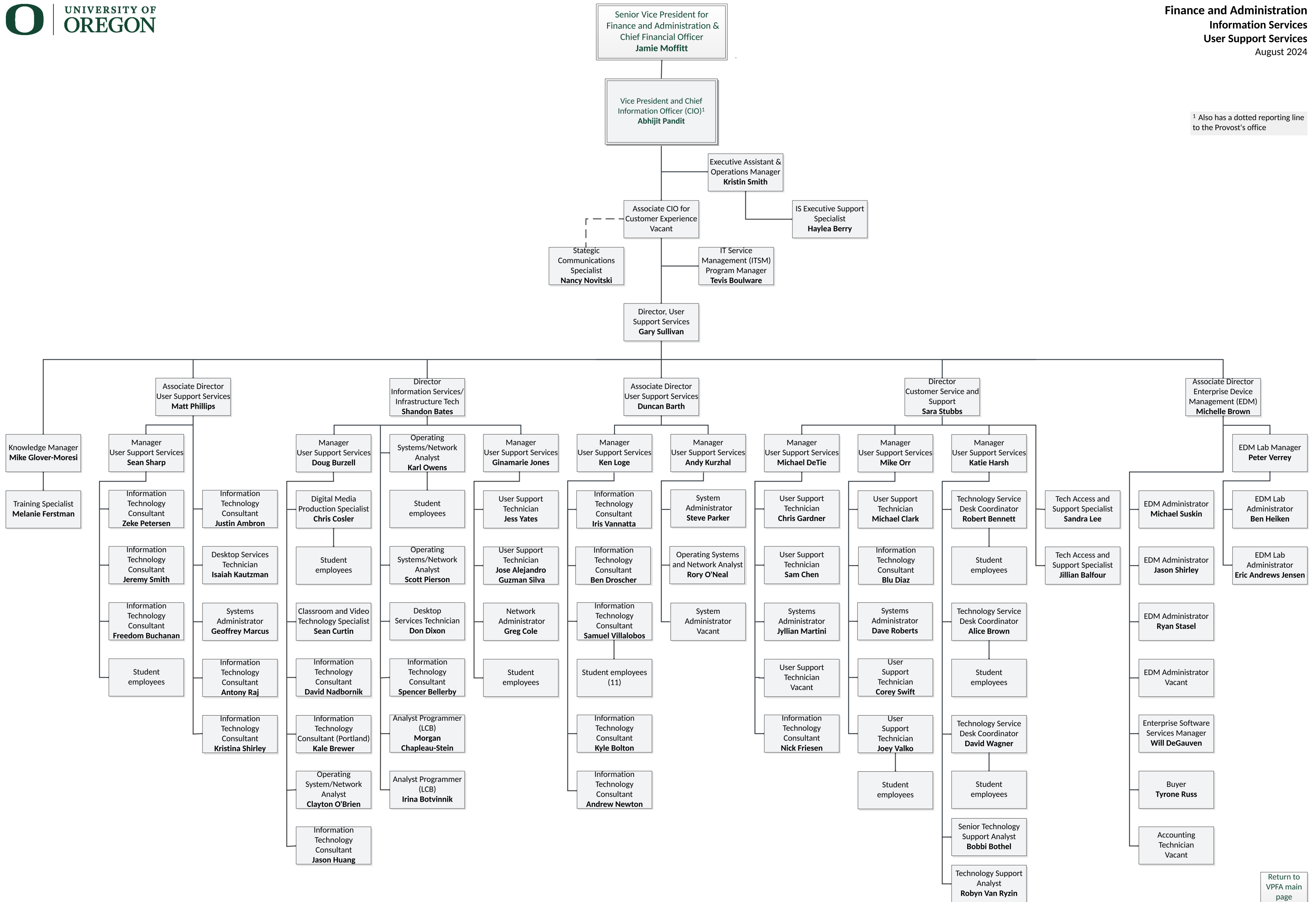
HR Partners, who provide HR unit-level support and are embedded in our academic and administrative units, are not included in this organizational chart.

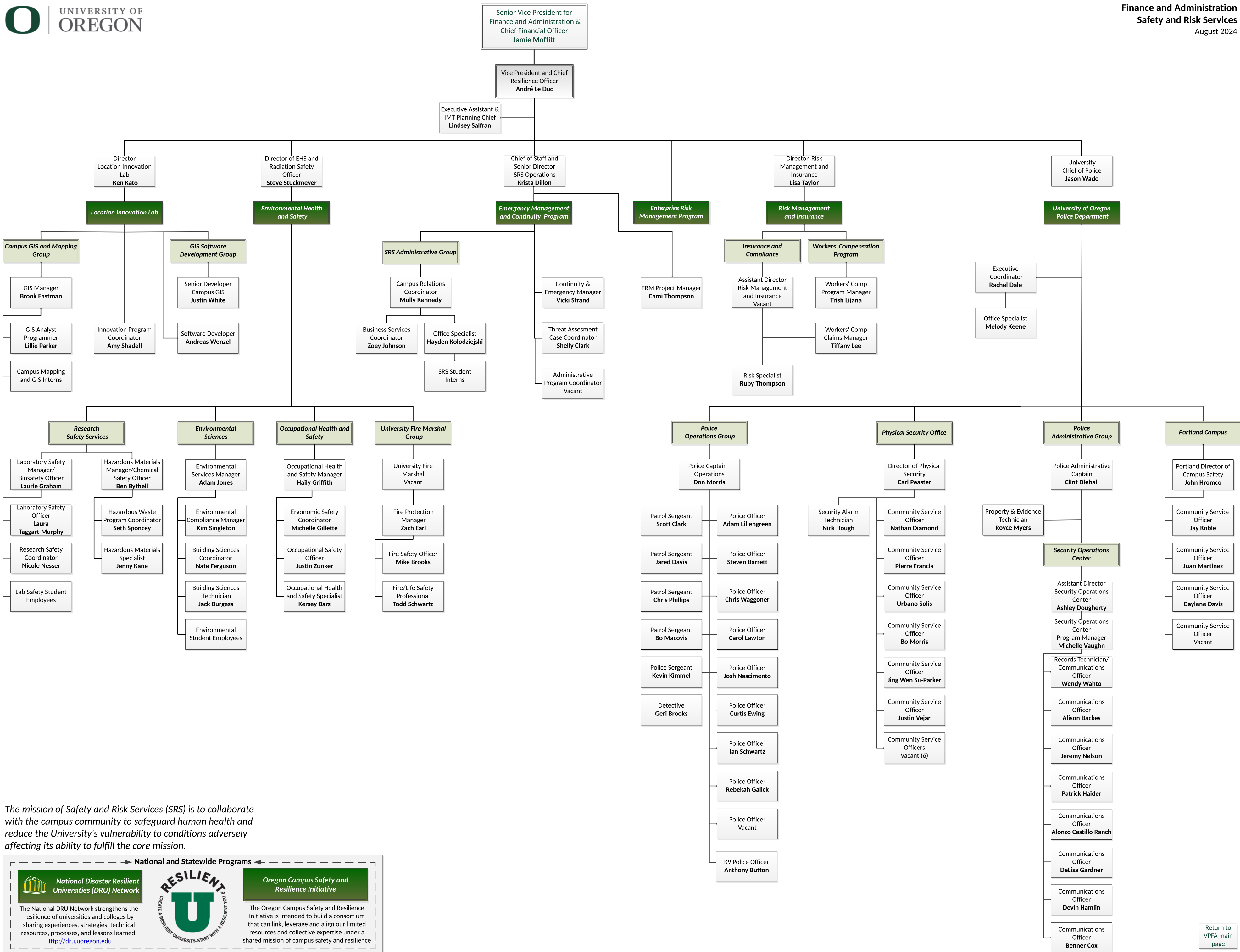


[Return to VPFA main page](#)

Notes
Some job titles and reporting lines will be adjusted as we move forward.
Interim (temporary) positions are indicated with dotted lines.
* Retirement Plans Management serves seven public higher education institutions in Oregon.

¹ Also has a dotted reporting line to the Provost's office





The mission of Safety and Risk Services (SRS) is to collaborate with the campus community to safeguard human health and reduce the University's vulnerability to conditions adversely affecting its ability to fulfill the core mission.

National and Statewide Programs

National Disaster Resilient Universities (DRU) Network

The National DRU Network strengthens the resilience of universities and colleges by sharing experiences, strategies, technical resources, processes, and lessons learned.
<http://dru.uoregon.edu>

RESILIENT U

CREATE A RESILIENT UNIVERSITY—START WITH A RESILIENT YOU!

Oregon Campus Safety and Resilience Initiative

The Oregon Campus Safety and Resilience Initiative is intended to build a consortium that can link, leverage and align our limited resources and collective expertise under a shared mission of campus safety and resilience

