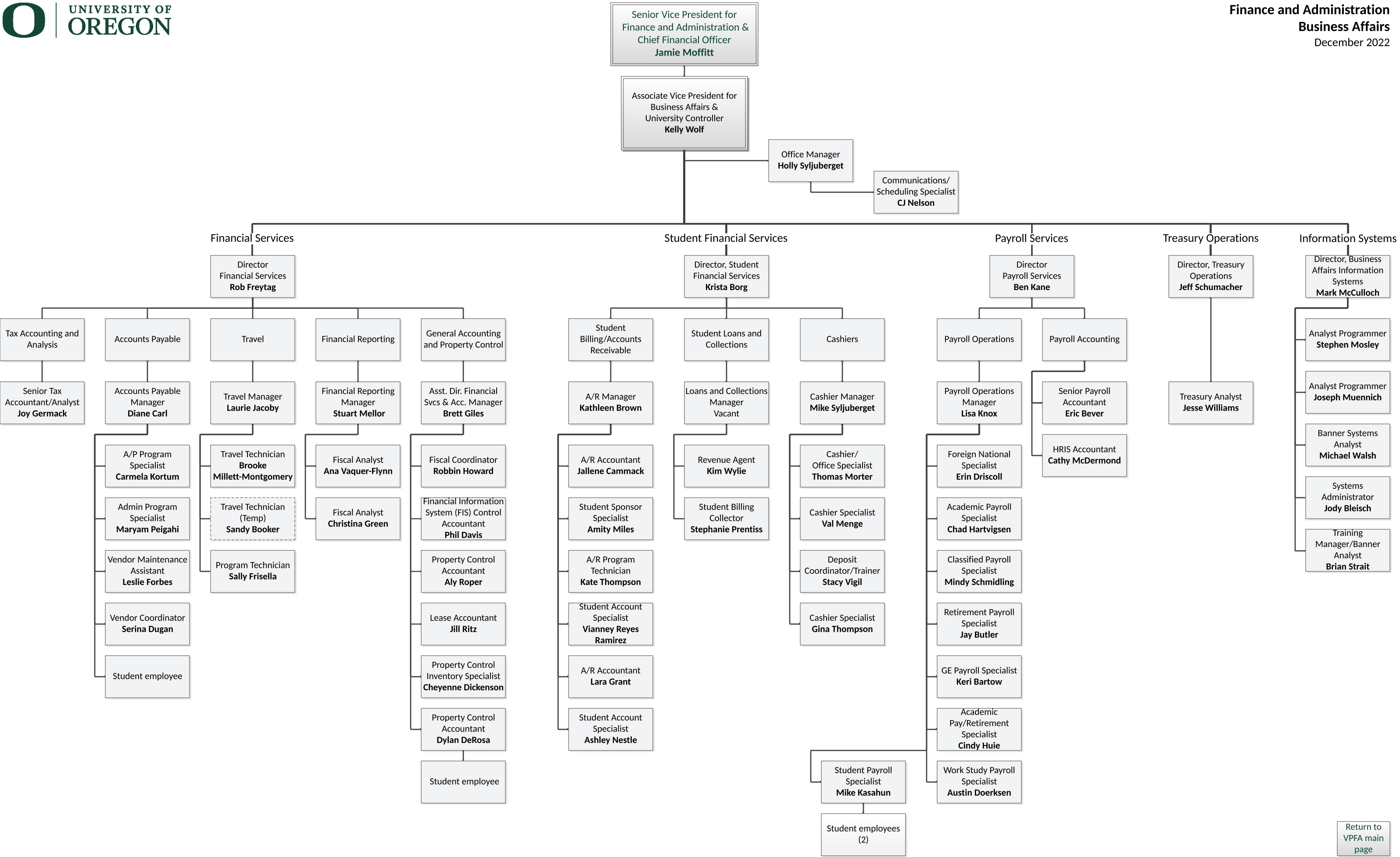
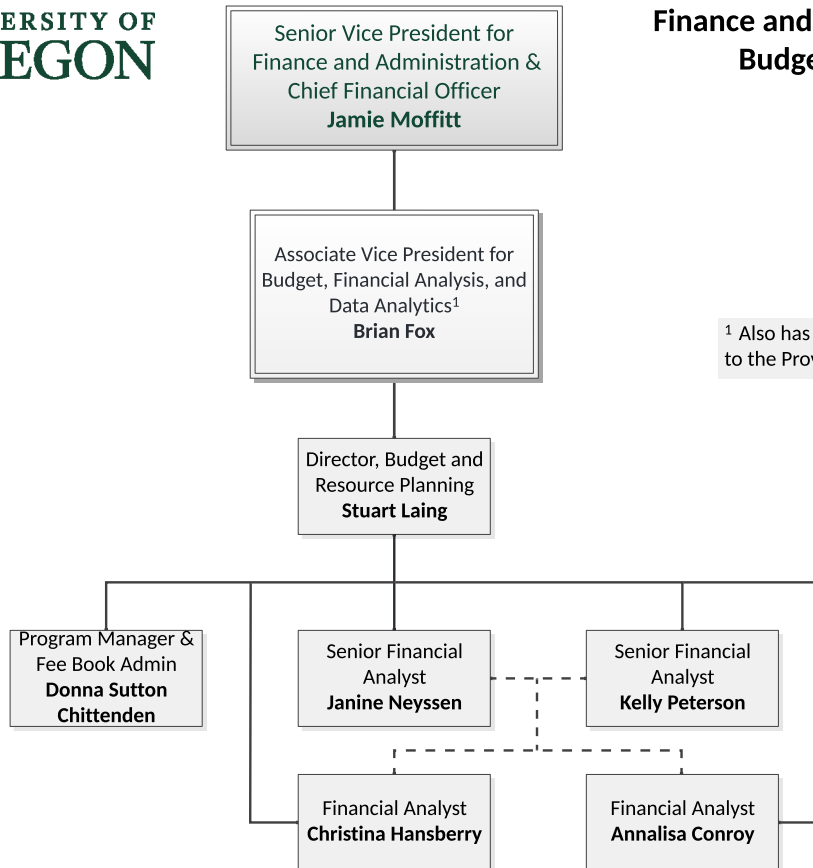
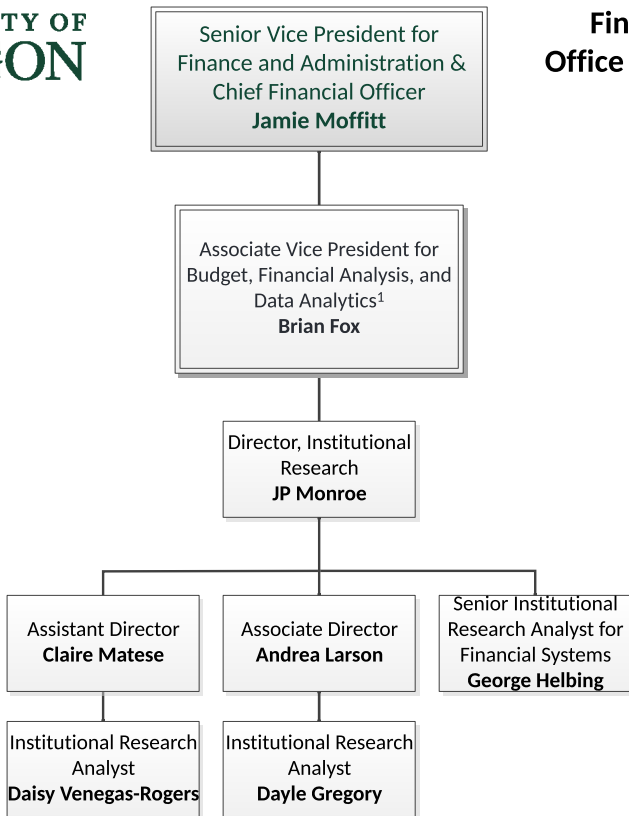


¹ Also has a dotted reporting line to the Provost's office
² Reports to the Executive Vice Provost for Academic Operations
³ Serves seven public higher education institutions in Oregon
⁴ Reports directly to the President

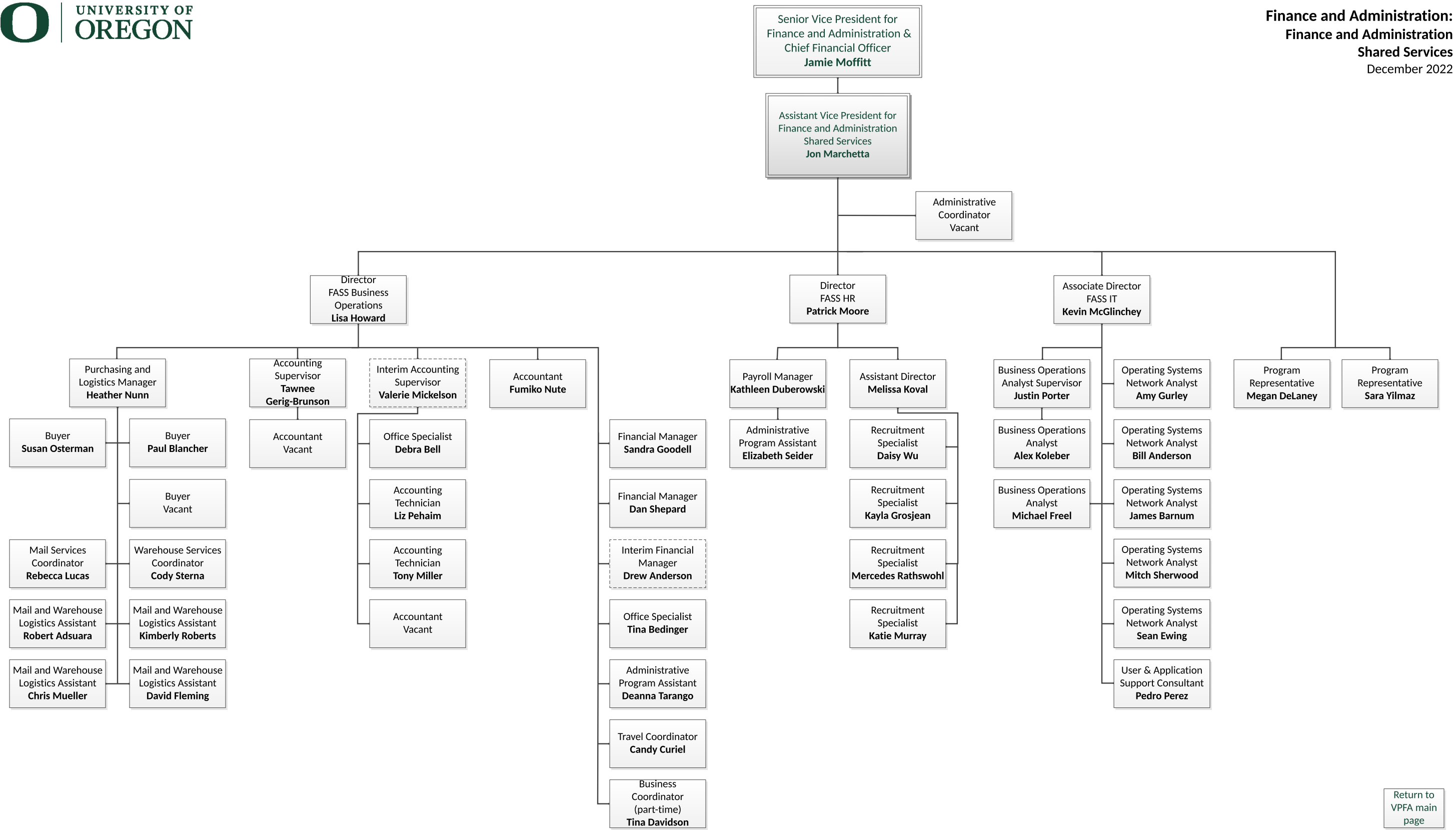


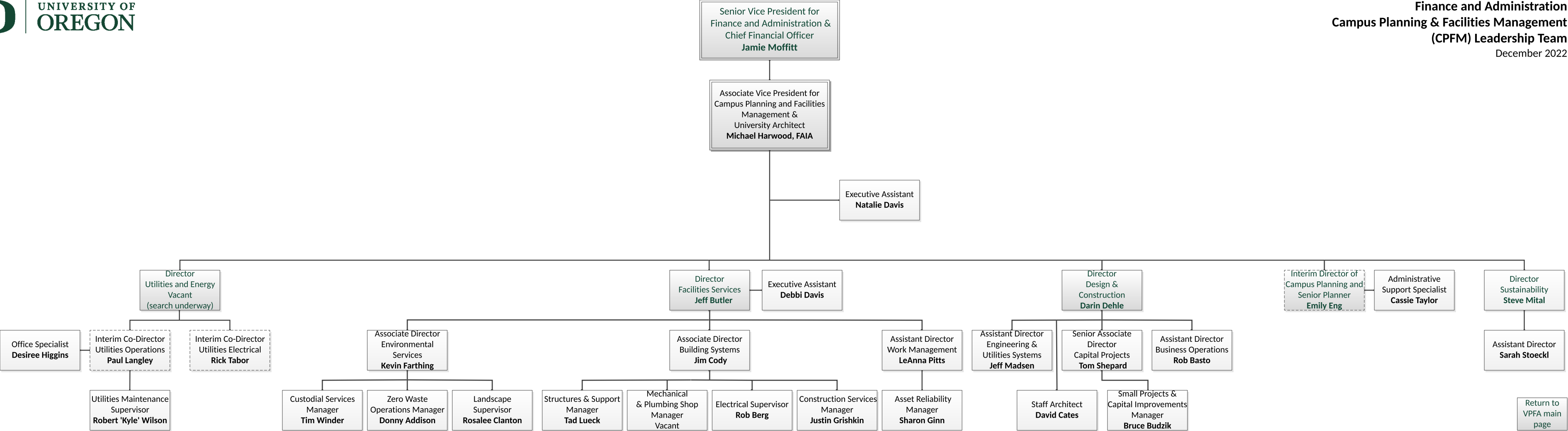


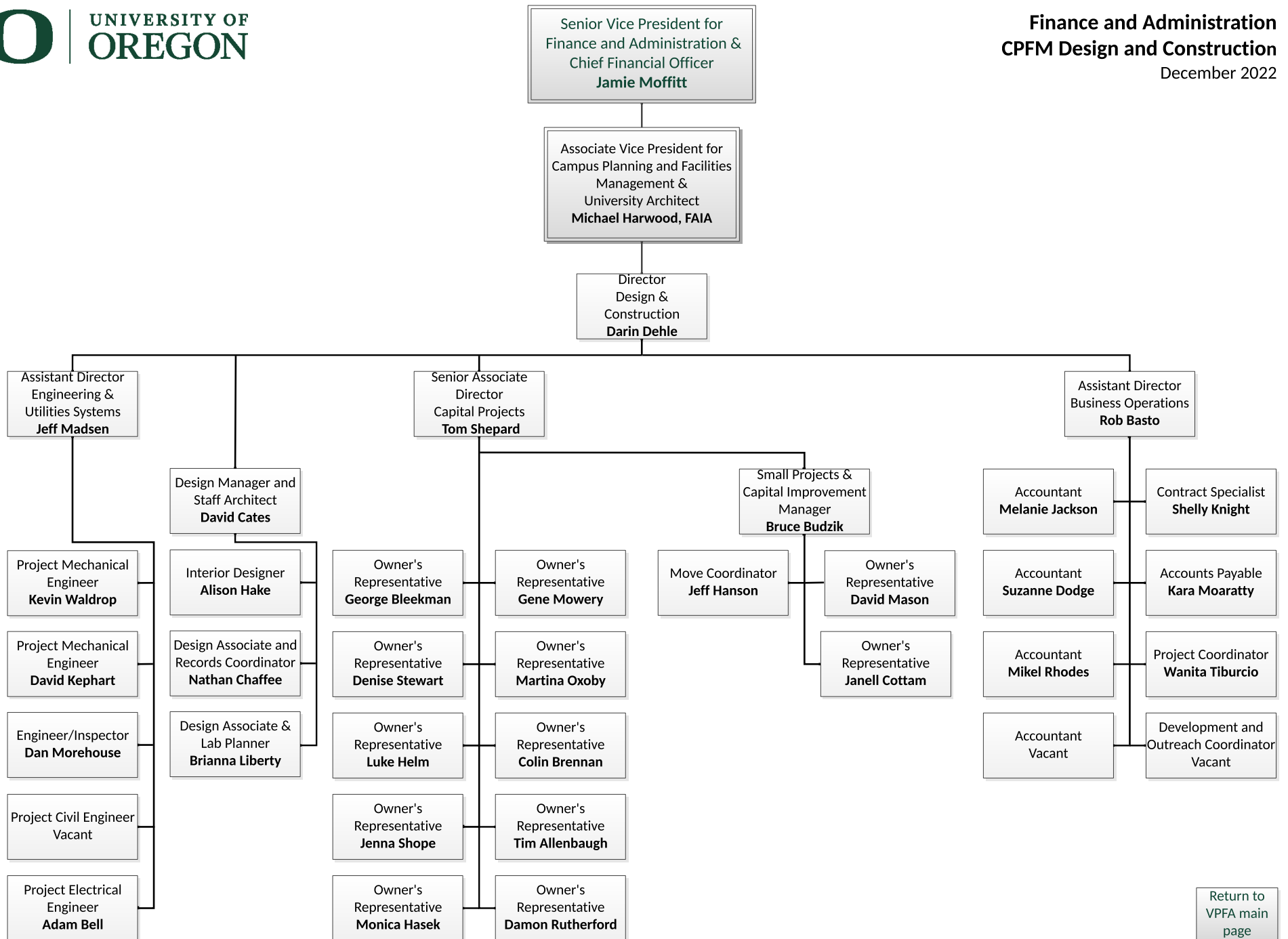
¹ Also has a dotted reporting line to the Provost's office



¹ Also has a dotted reporting line to the Provost's office







Senior Vice President for
Finance and Administration &
Chief Financial Officer
Jamie Moffitt

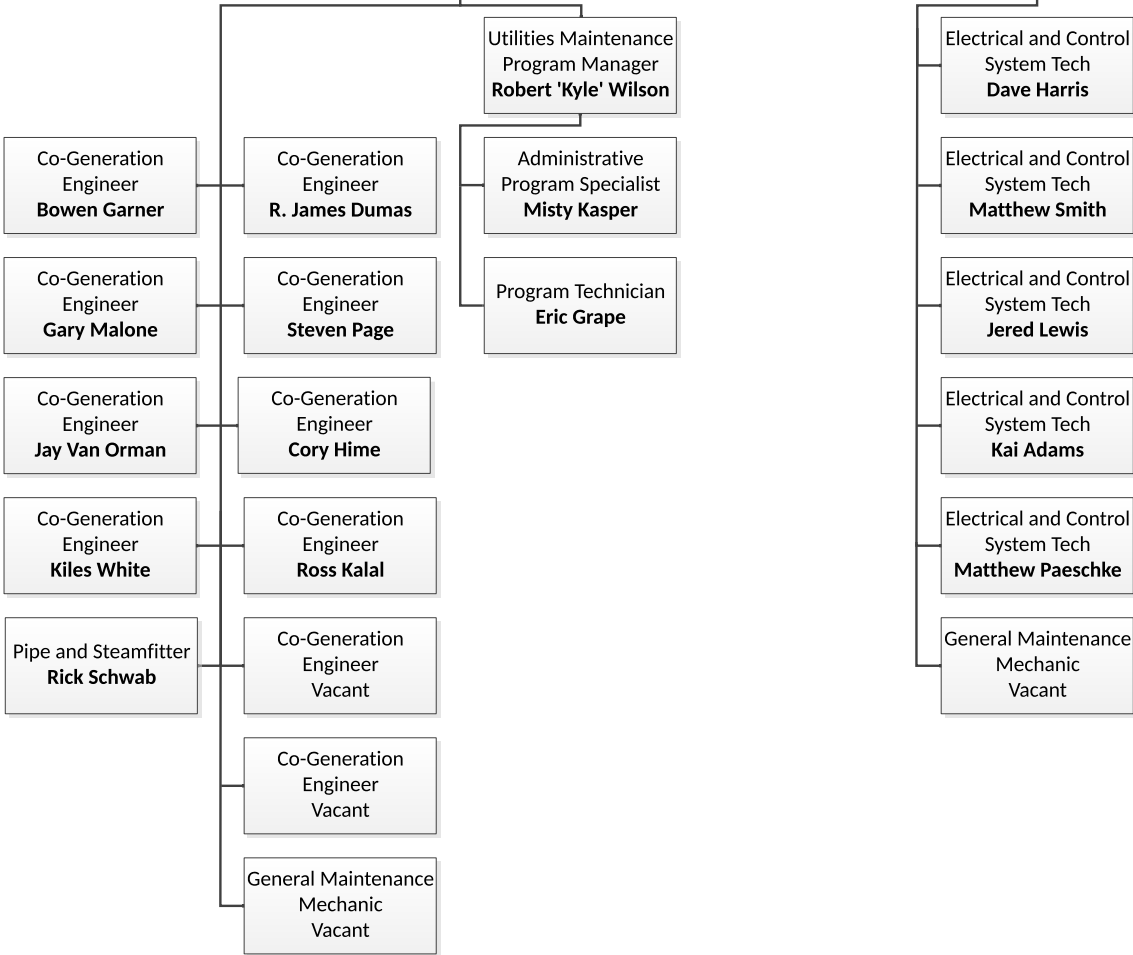
Associate Vice President for
Campus Planning and Facilities
Management &
University Architect
Michael Harwood, FAIA

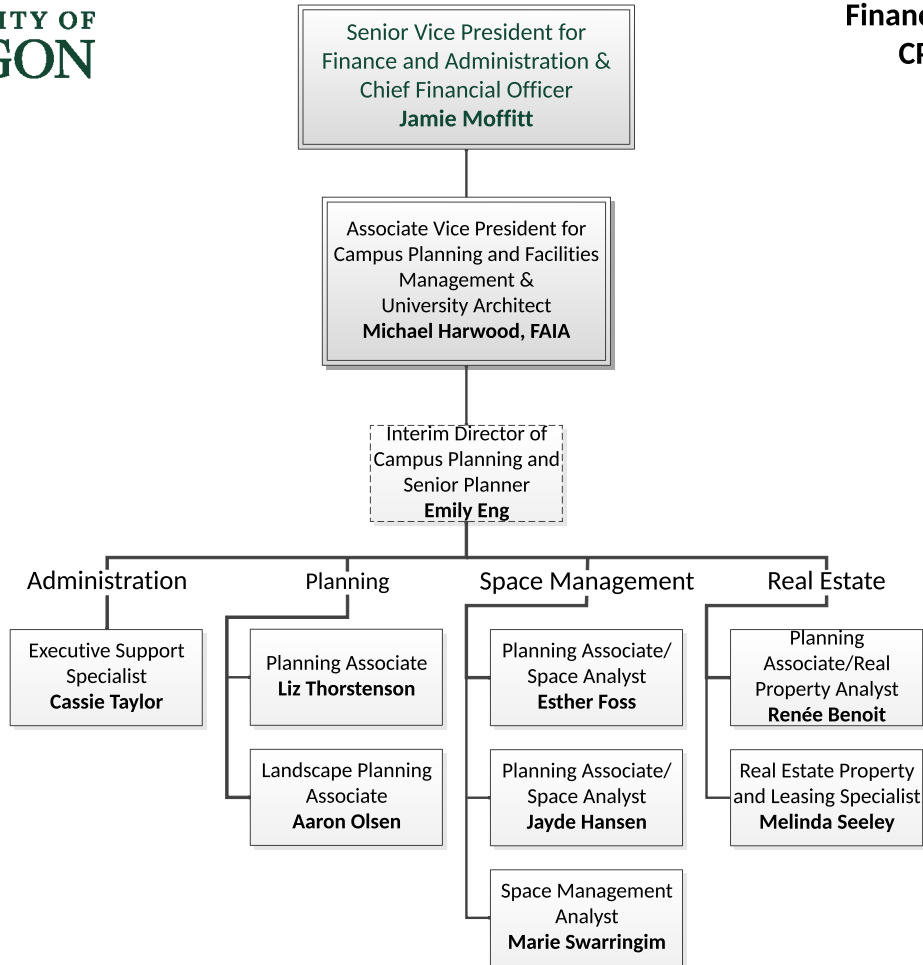
Director
Utilities & Energy
Vacant
(search underway)

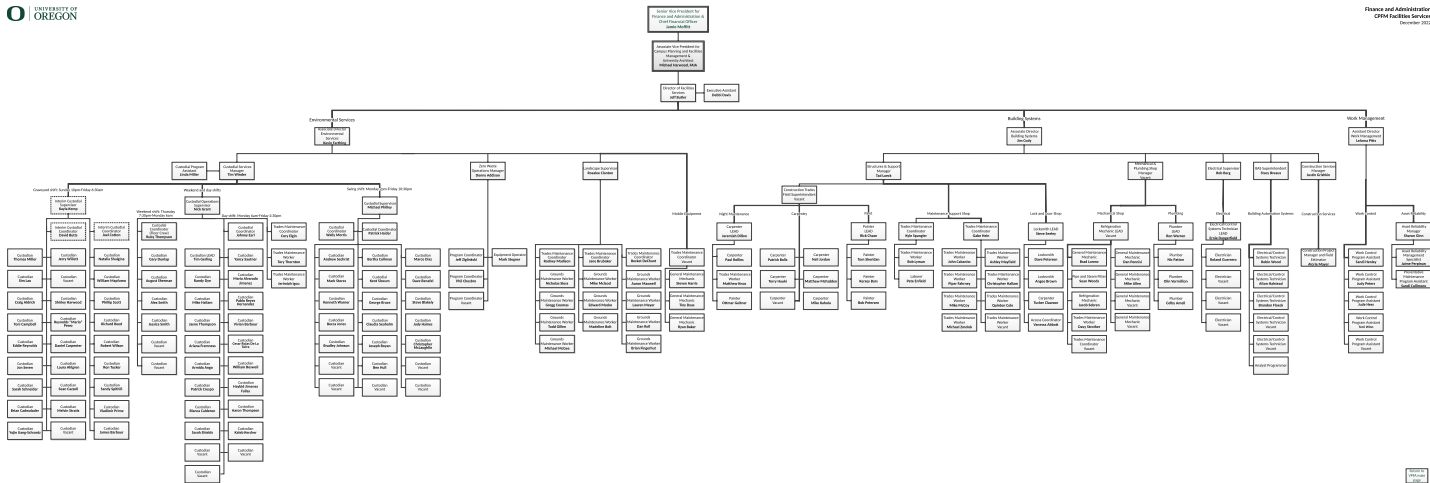
Interim Co-Director
Utilities Operations
Paul Langley

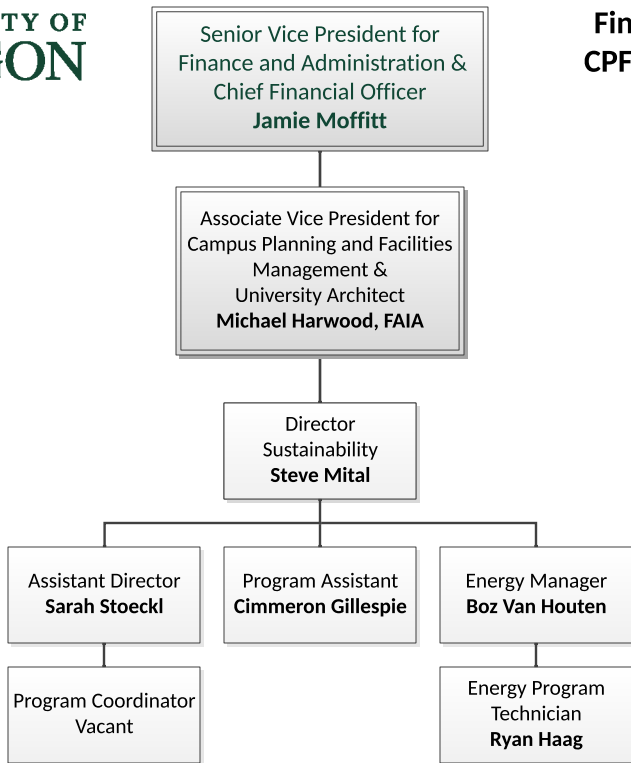
Office Specialist
Desiree Higgins

Interim Co-Director
Utilities Electrical
Rick Tabor

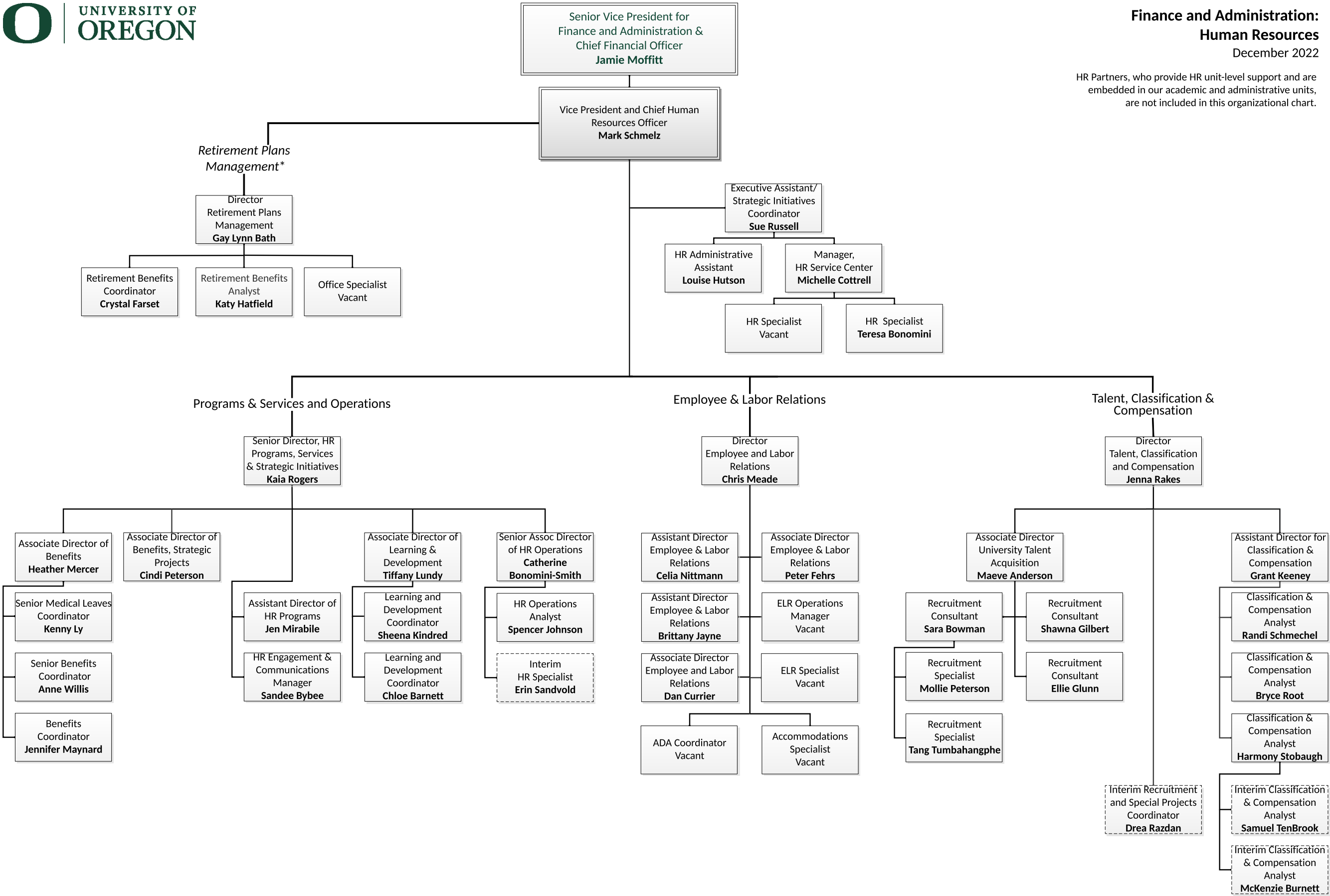






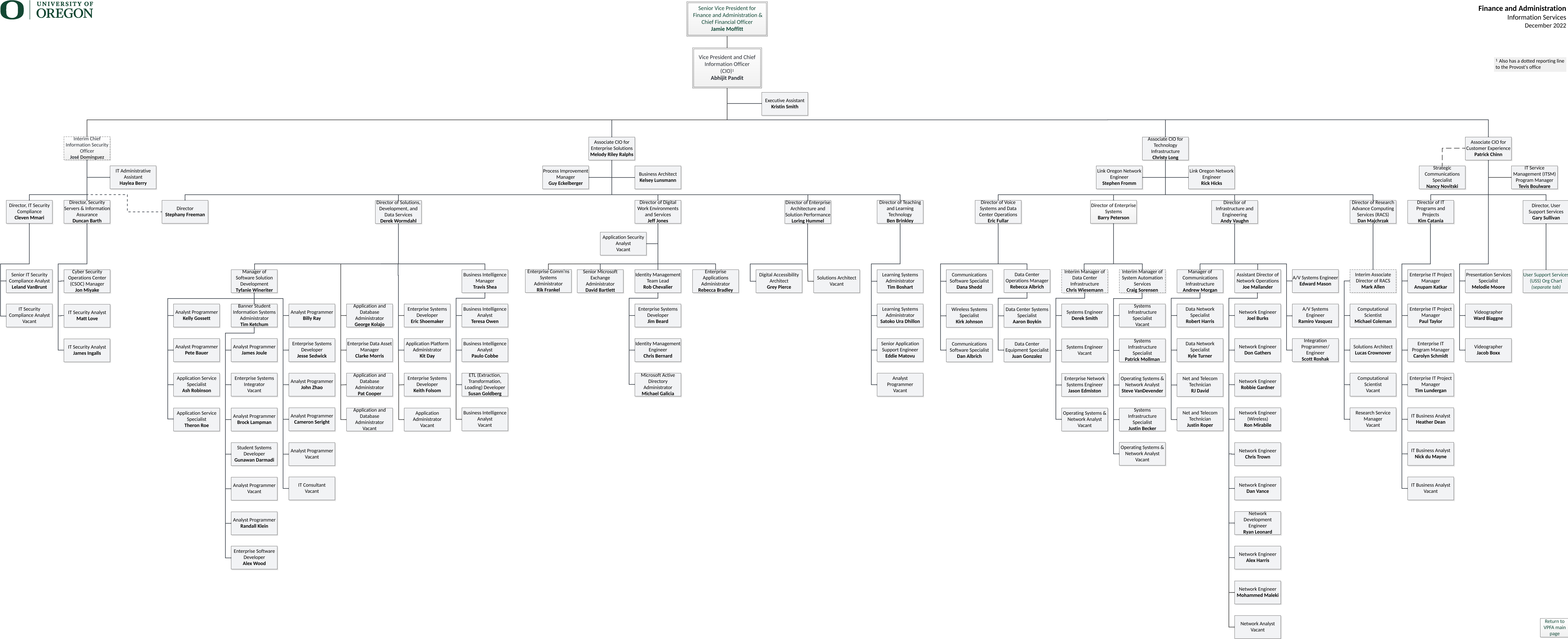


HR Partners, who provide HR unit-level support and are embedded in our academic and administrative units, are not included in this organizational chart.

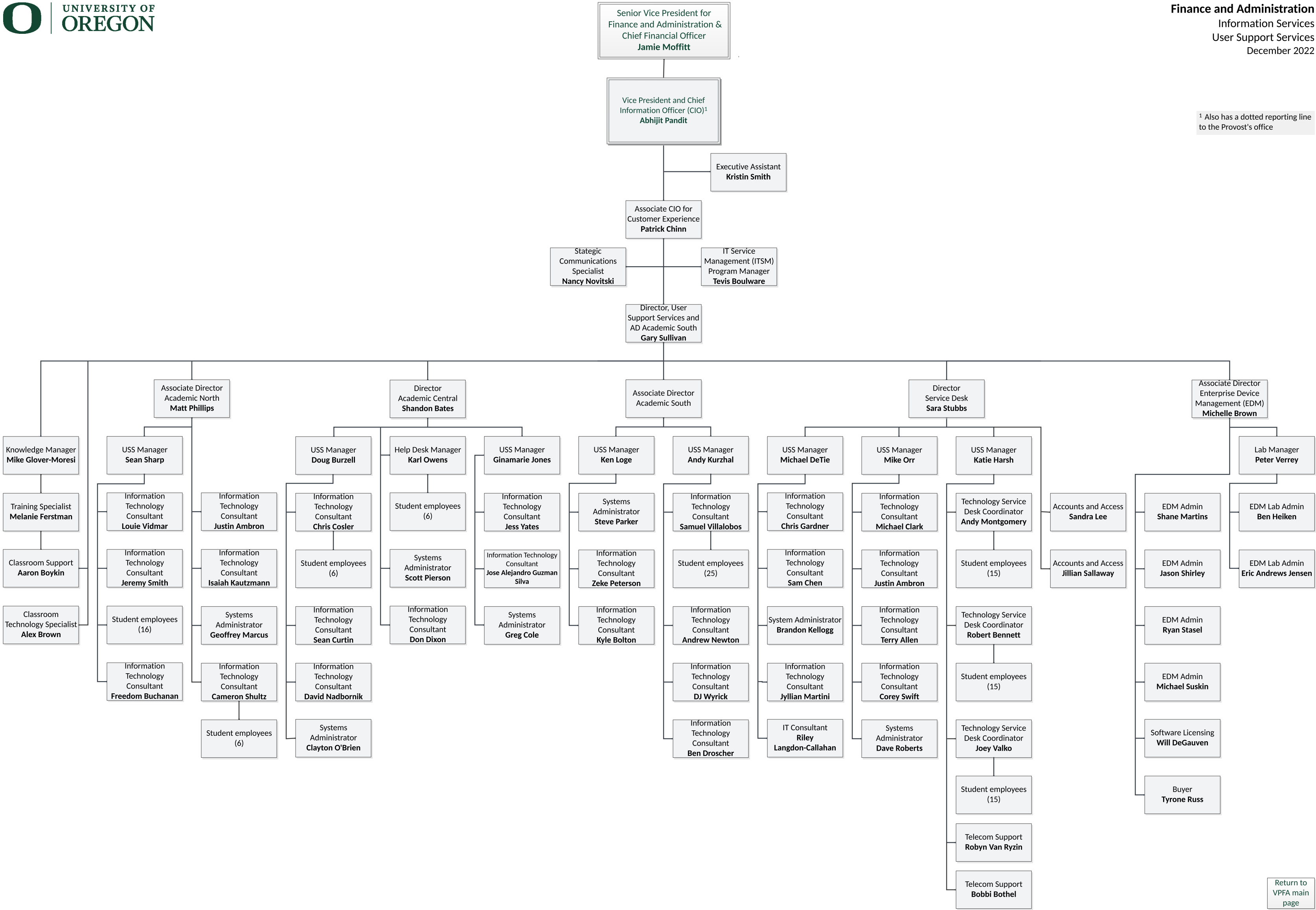


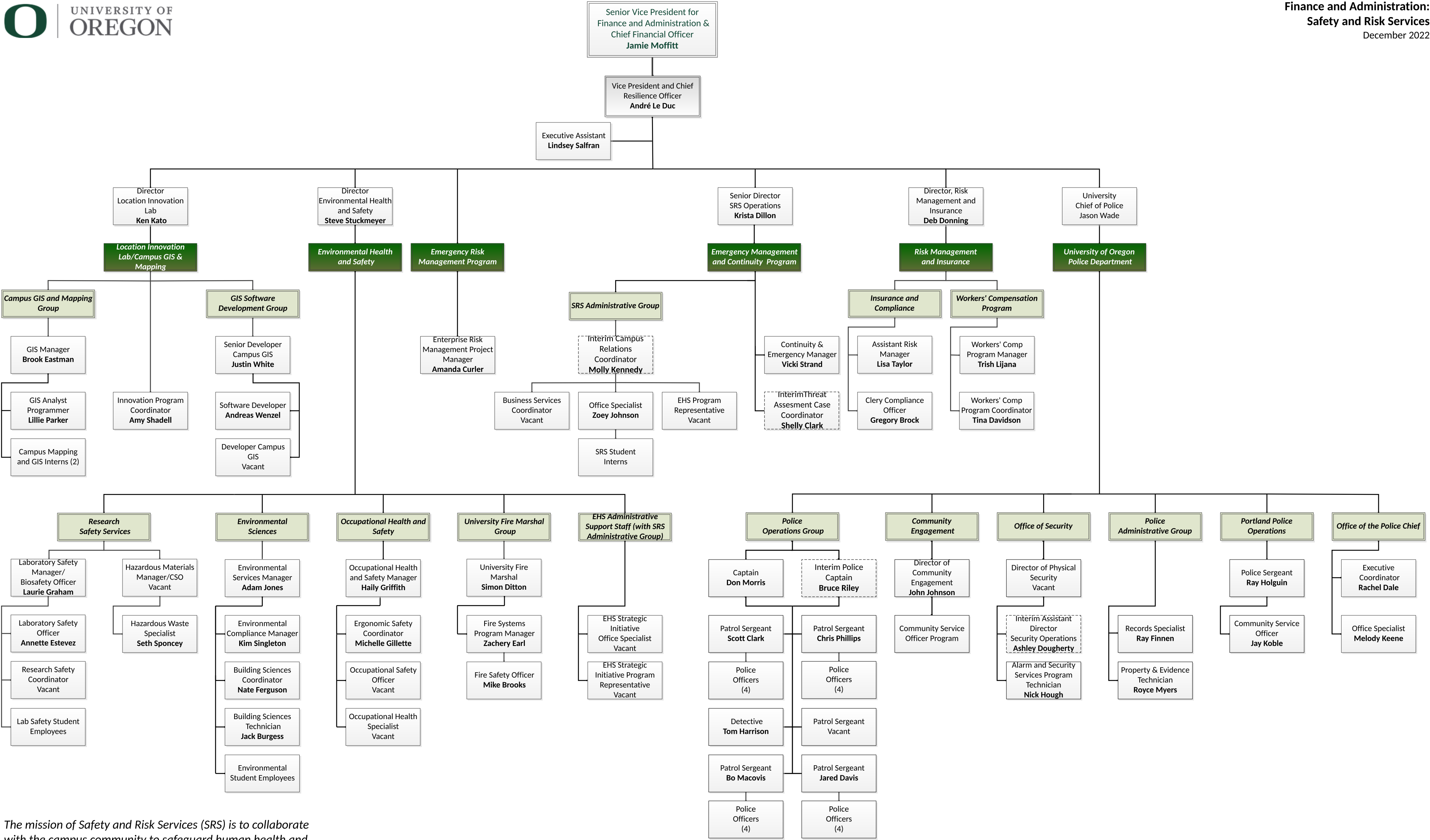
Notes
Some job titles and reporting lines will be adjusted as we move forward.
Interim (temporary) positions are indicated with dotted lines.
* Retirement Plans Management serves seven public higher education institutions in Oregon.

¹ Also has a dotted reporting line to the Provost's office



¹ Also has a dotted reporting line to the Provost's office





The mission of Safety and Risk Services (SRS) is to collaborate with the campus community to safeguard human health and reduce the University's vulnerability to conditions adversely affecting its ability to fulfill the core mission.



National Disaster Resilient Universities (DRU) Network

The National DRU Network strengthens the resilience of universities and colleges by sharing experiences, strategies, technical resources, processes, and lessons learned.

<http://dru.uoregon.edu>



Oregon Campus Safety and Resilience Initiative

The Oregon Campus Safety and Resilience Initiative is intended to build a consortium that can link, leverage and align our limited resources and collective expertise under a shared mission of campus safety and resilience

