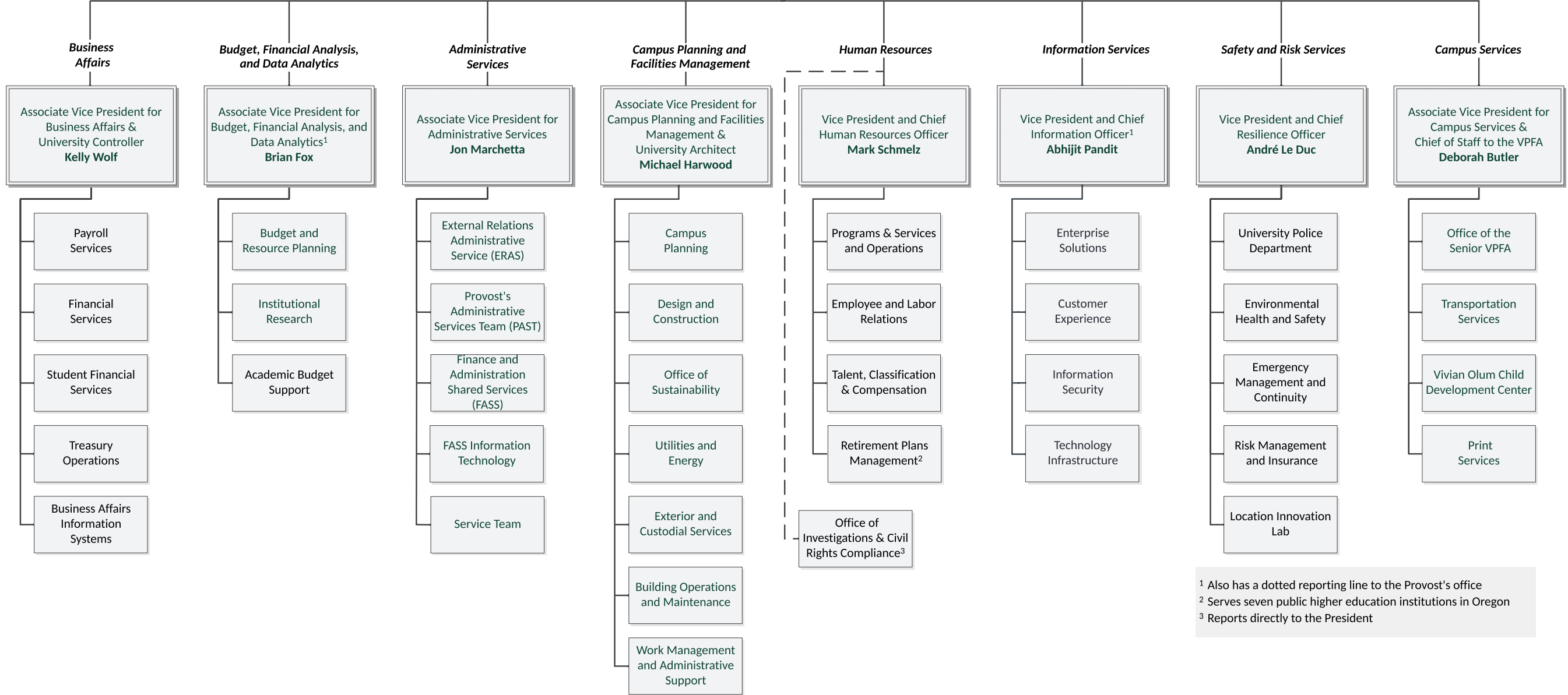
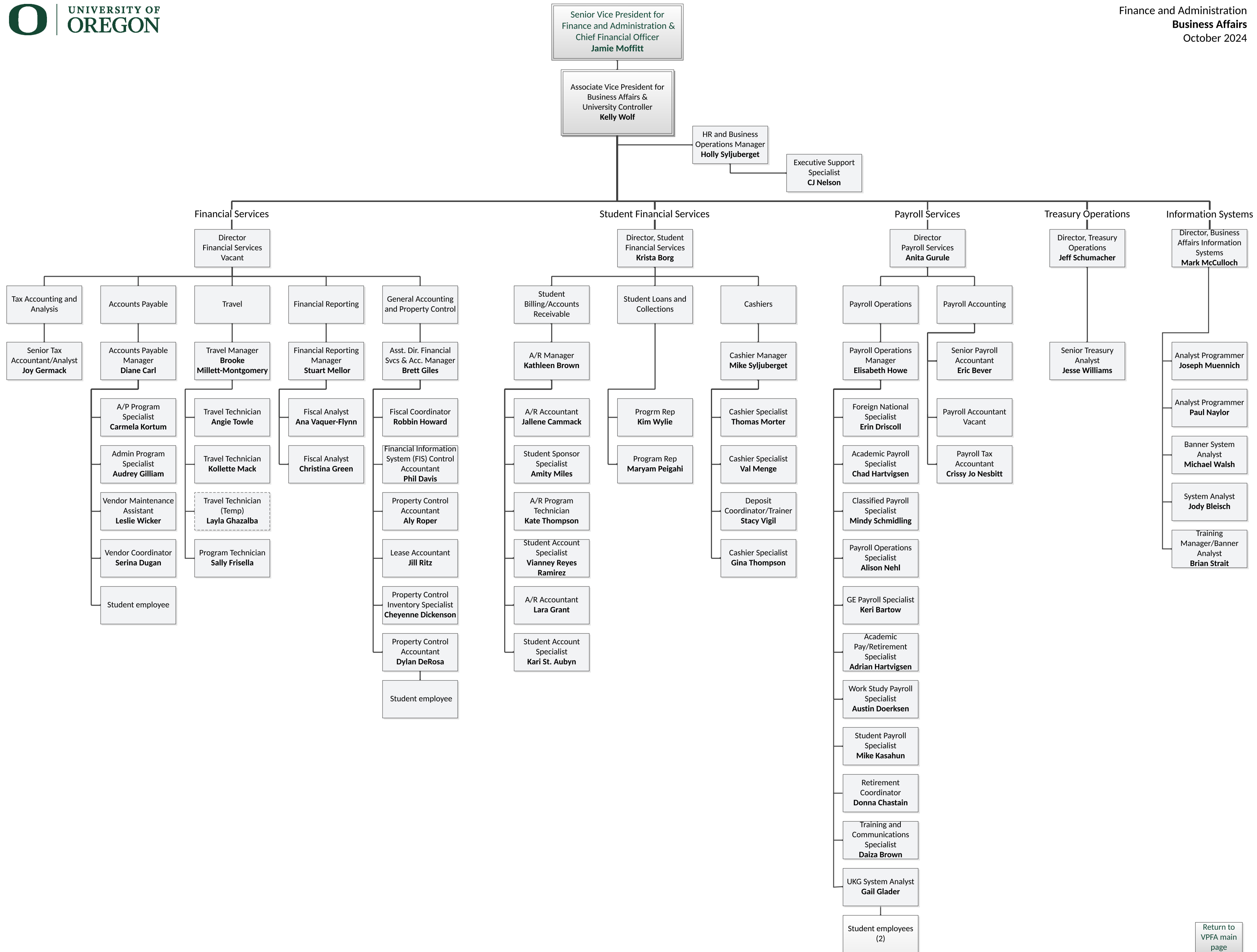
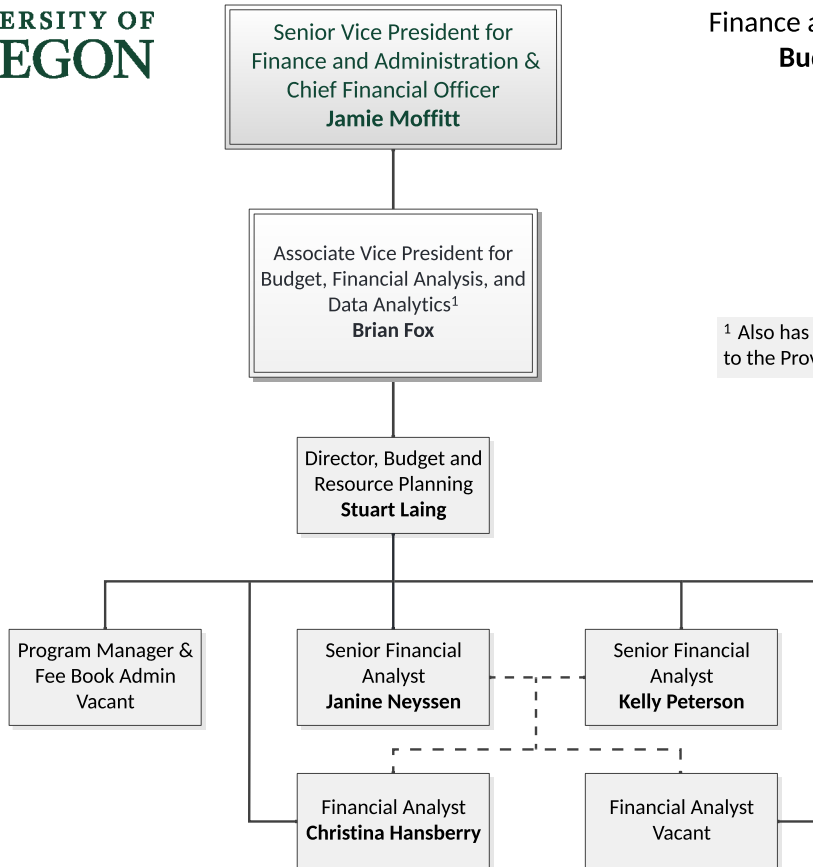


Senior Vice President for  
Finance and Administration &  
Chief Financial Officer  
**Jamie Moffitt**



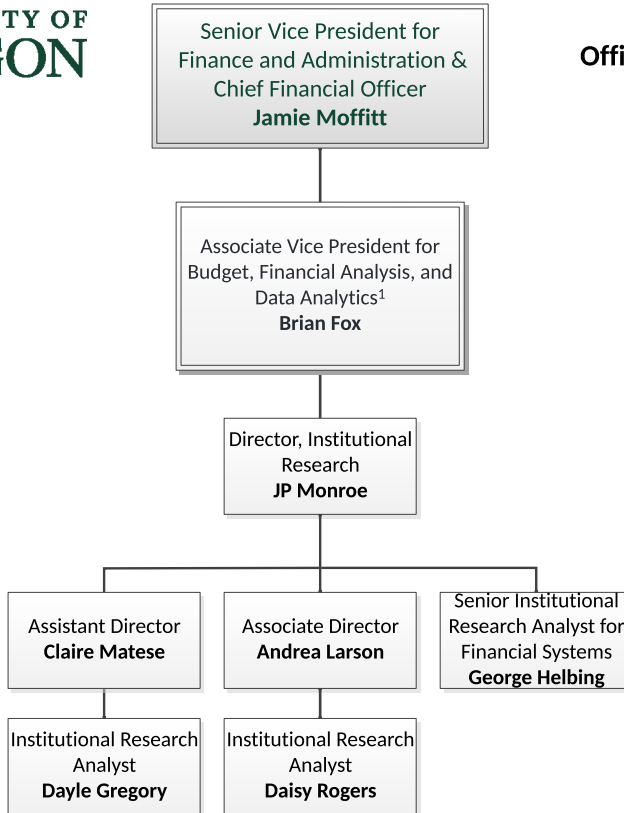
<sup>1</sup> Also has a dotted reporting line to the Provost's office  
<sup>2</sup> Serves seven public higher education institutions in Oregon  
<sup>3</sup> Reports directly to the President





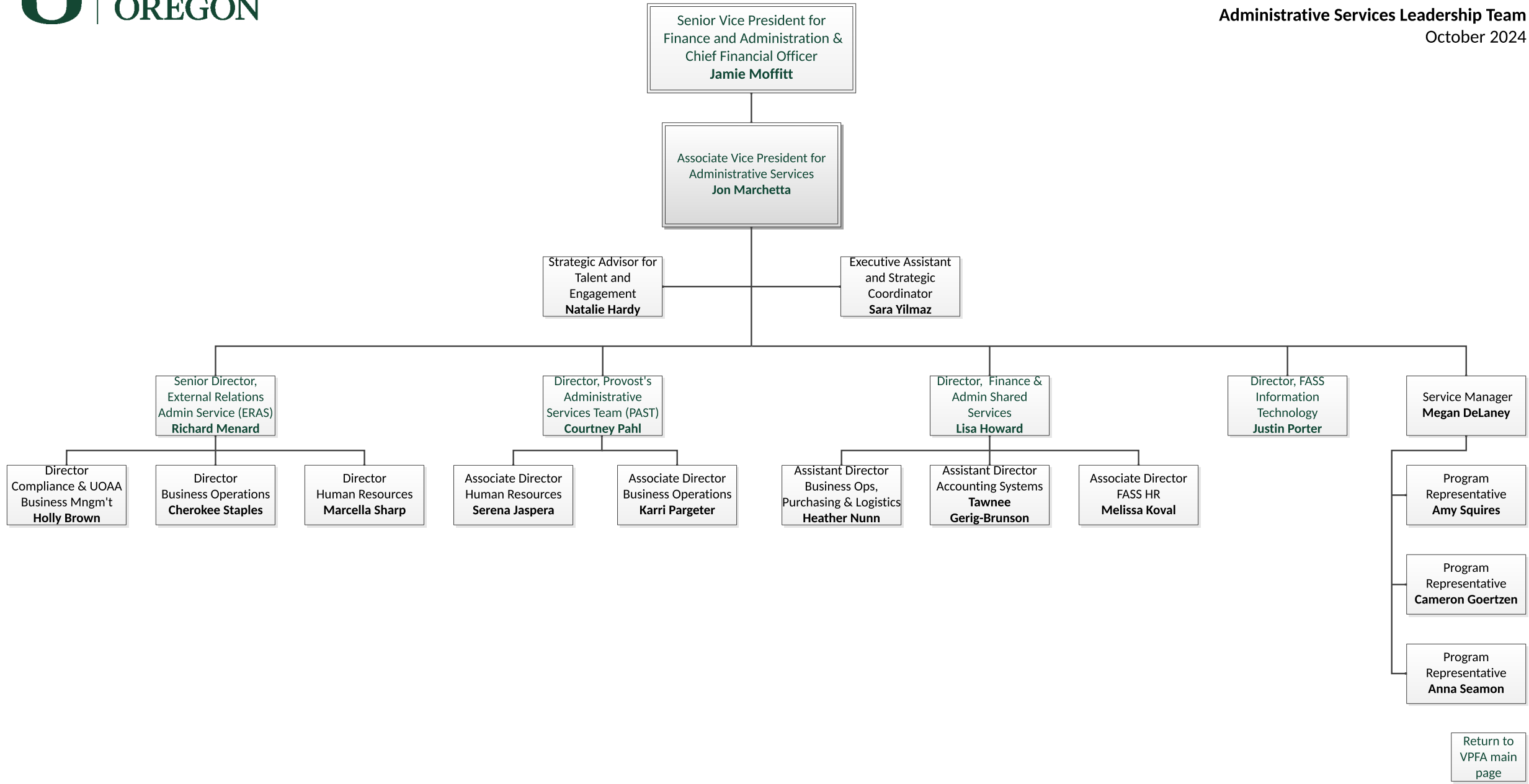
<sup>1</sup> Also has a dotted reporting line to the Provost's office

[Return to VPFA main page](#)

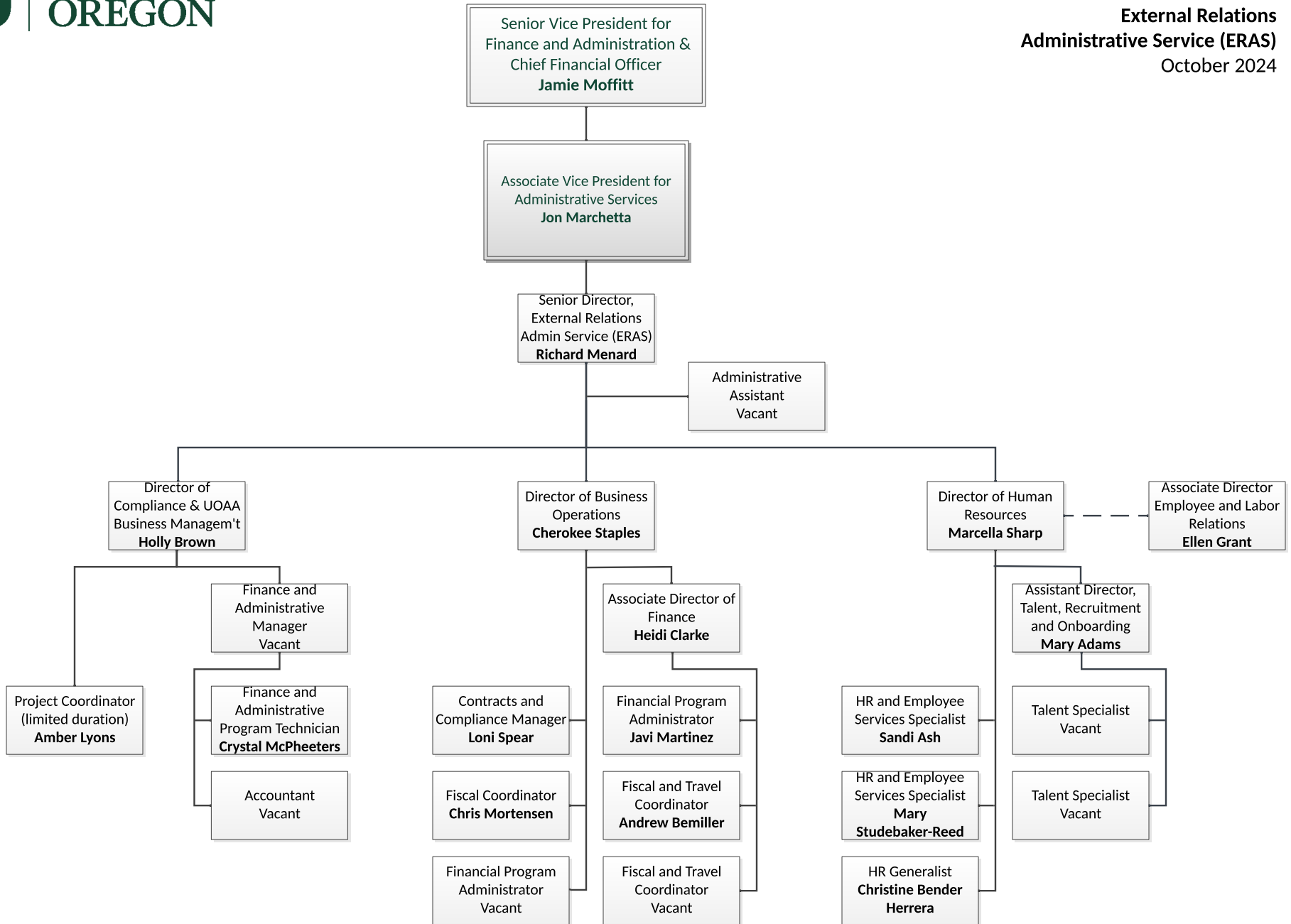


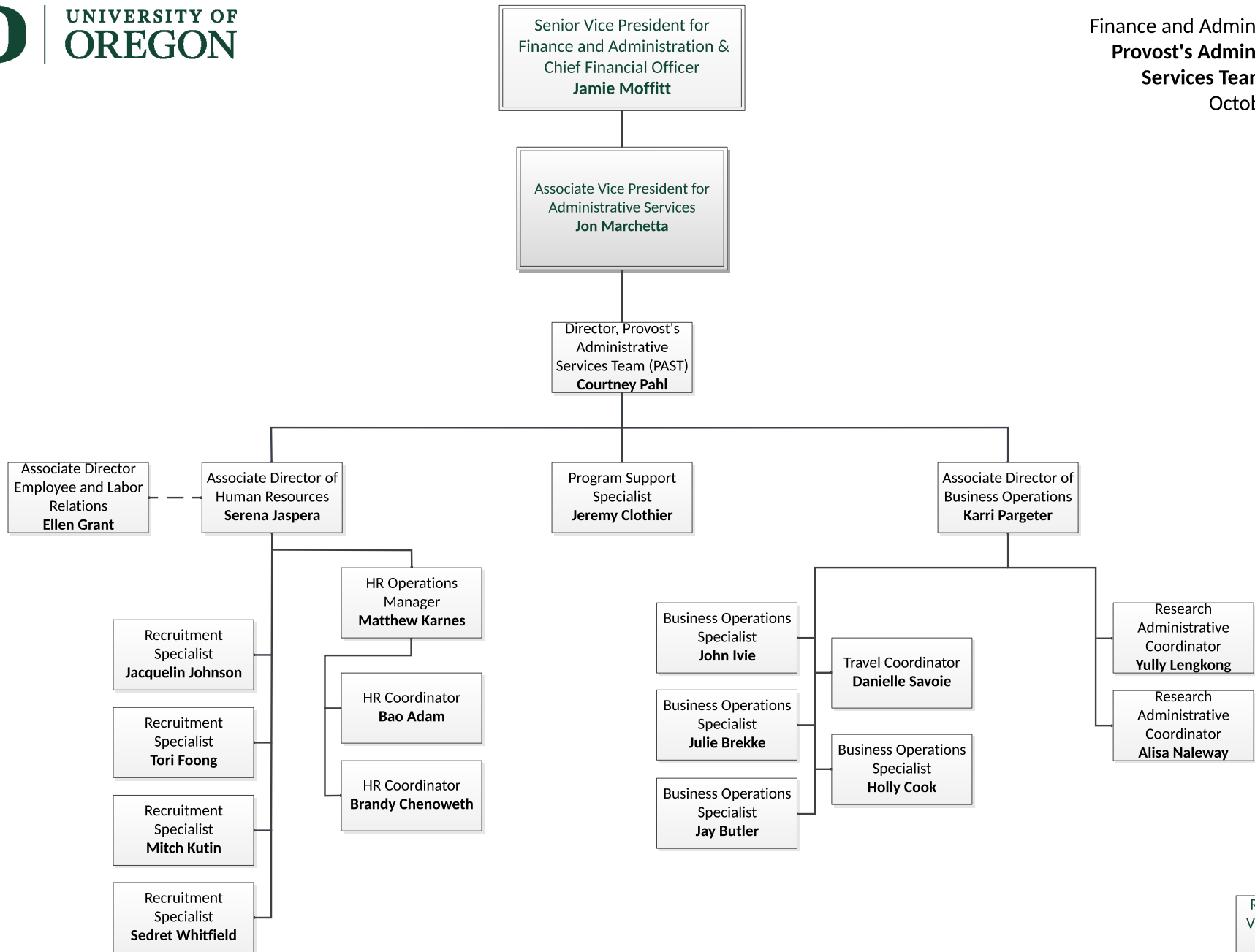
<sup>1</sup> Also has a dotted reporting line to the Provost's office

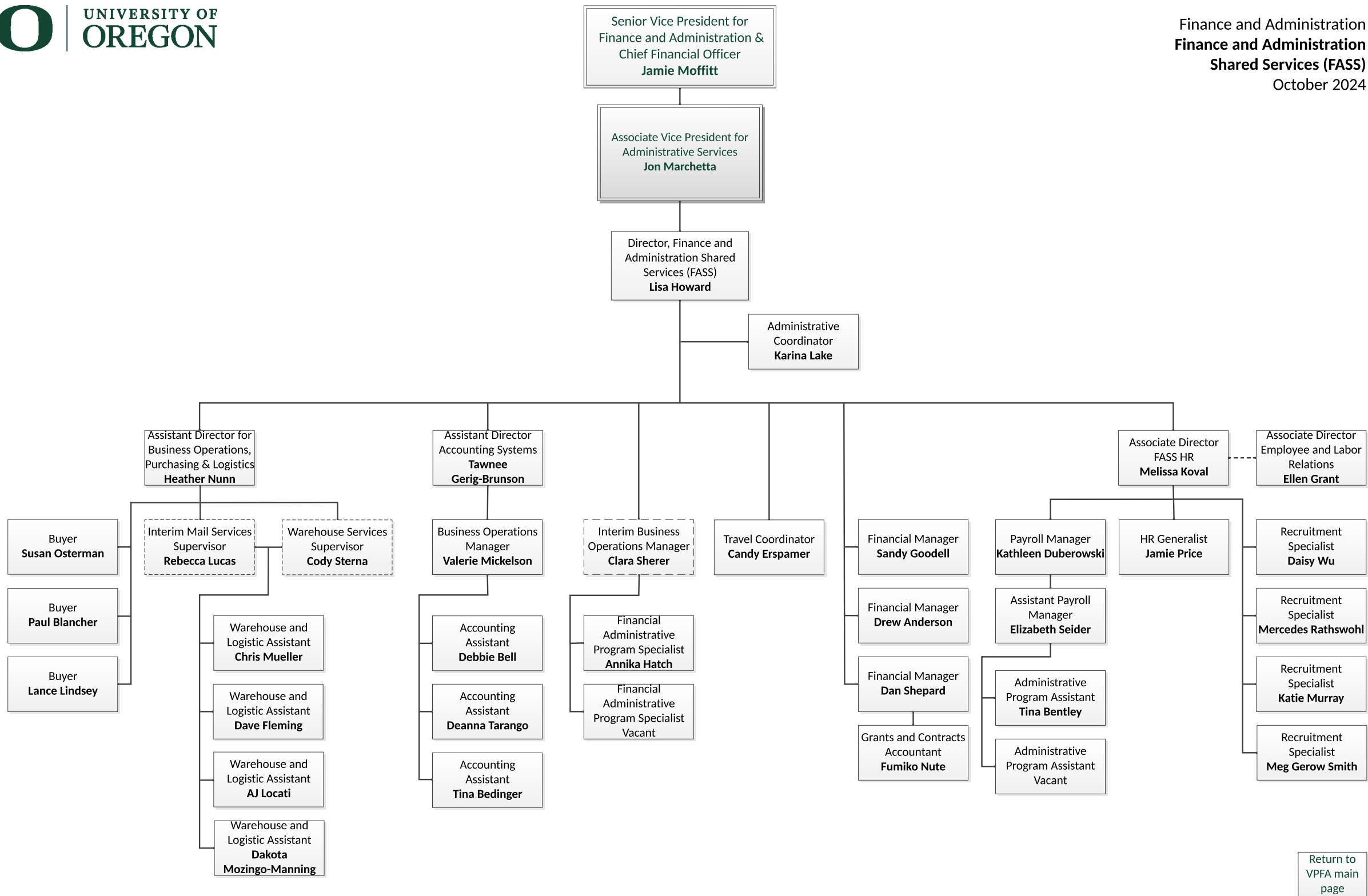
[Return to VPFA main page](#)



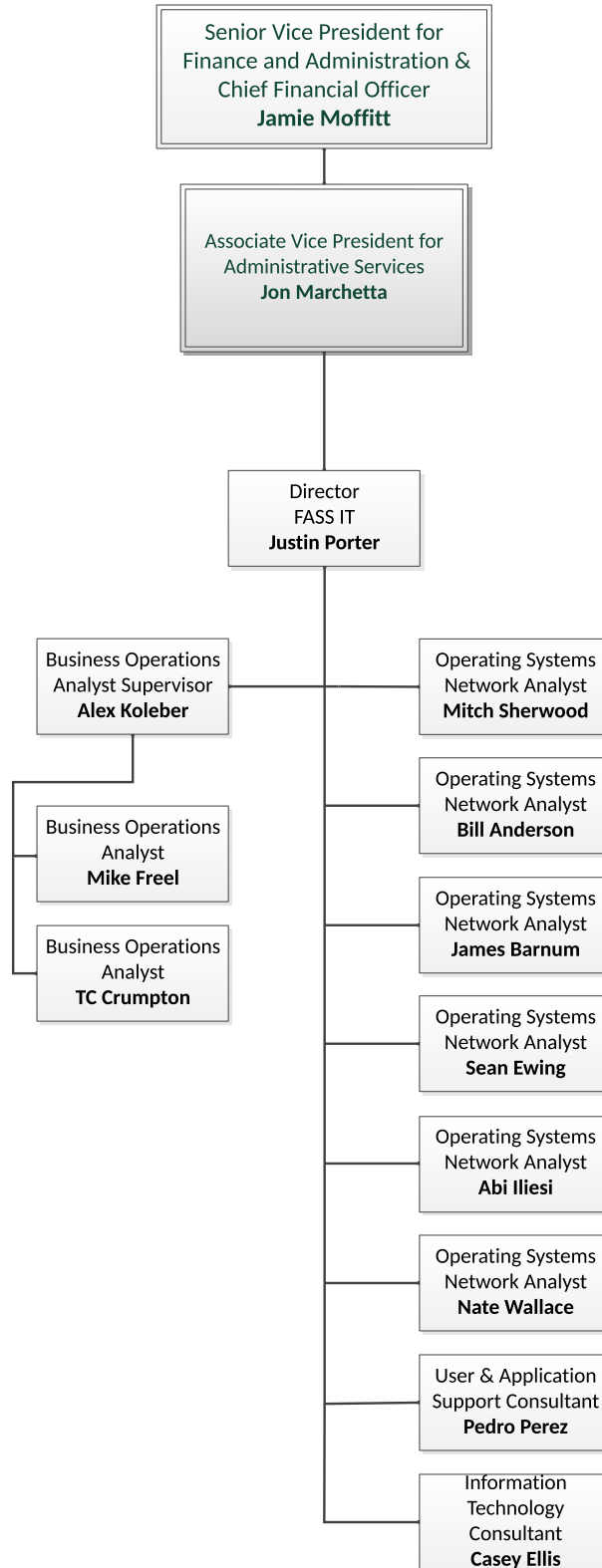
Return to  
VPFA main  
page











Senior Vice President for Finance and Administration & Chief Financial Officer  
**Jamie Moffitt**

Associate Vice President for Campus Planning and Facilities Management & University Architect  
**Michael Harwood, FAIA**

Executive Assistant  
**Natalie Davis**

Director Utilities and Energy & Sustainability  
**Steve Mital**

Exterior and Custodial Services Director  
**Kevin Farthing**

Building Operations and Management Director  
**Jim Cody**

Work Management and Admin Support Director  
**LeAnna Pitts**

Director Design & Construction  
**Darin Dehle**

Director of Campus Planning  
**Emily Eng**

Executive Support Specialist  
**Cassie Taylor**

Office Specialist  
**Desiree Higgins**

Associate Director Utilities Operations  
**Paul Langley**

Associate Director Utilities Electrical  
**Rick Tabor**

Assistant Director Sustainability  
**Sarah Stoeckl**

Utilities Maintenance Supervisor  
**Robert 'Kyle' Wilson**

Solid Waste Manager  
**Phil Chesbro**

Interim Landscape Supervisor  
**Tim Winder**

Carpentry, Paint, and Night Maintenance Manager  
**Tad Lueck**

Maintenance Support Supervisor  
**Gabe Hein**

Lock and Door Supervisor  
**Steve Seeley**

Mechanical & Plumbing Shop Manager  
**Shaun Frasier**

Electrical Supervisor  
**Rob Berg**

BAS Superintendent  
**Stacy Breaux**

Facilities Manager UO Portland  
**Dane Bevan**

Construction Services Manager  
**Justin Grishkin**

Asset Reliability Manager  
**Sharon Ginn**

Administrative Manager  
**Debbi Davis**

Assistant Director Engineering & Utilities Systems  
**Jeff Madsen**

Senior Associate Director Capital Projects  
**Tom Shepard**

Assistant Director Business Operations  
**Rob Basto**

Staff Architect  
**David Cates**

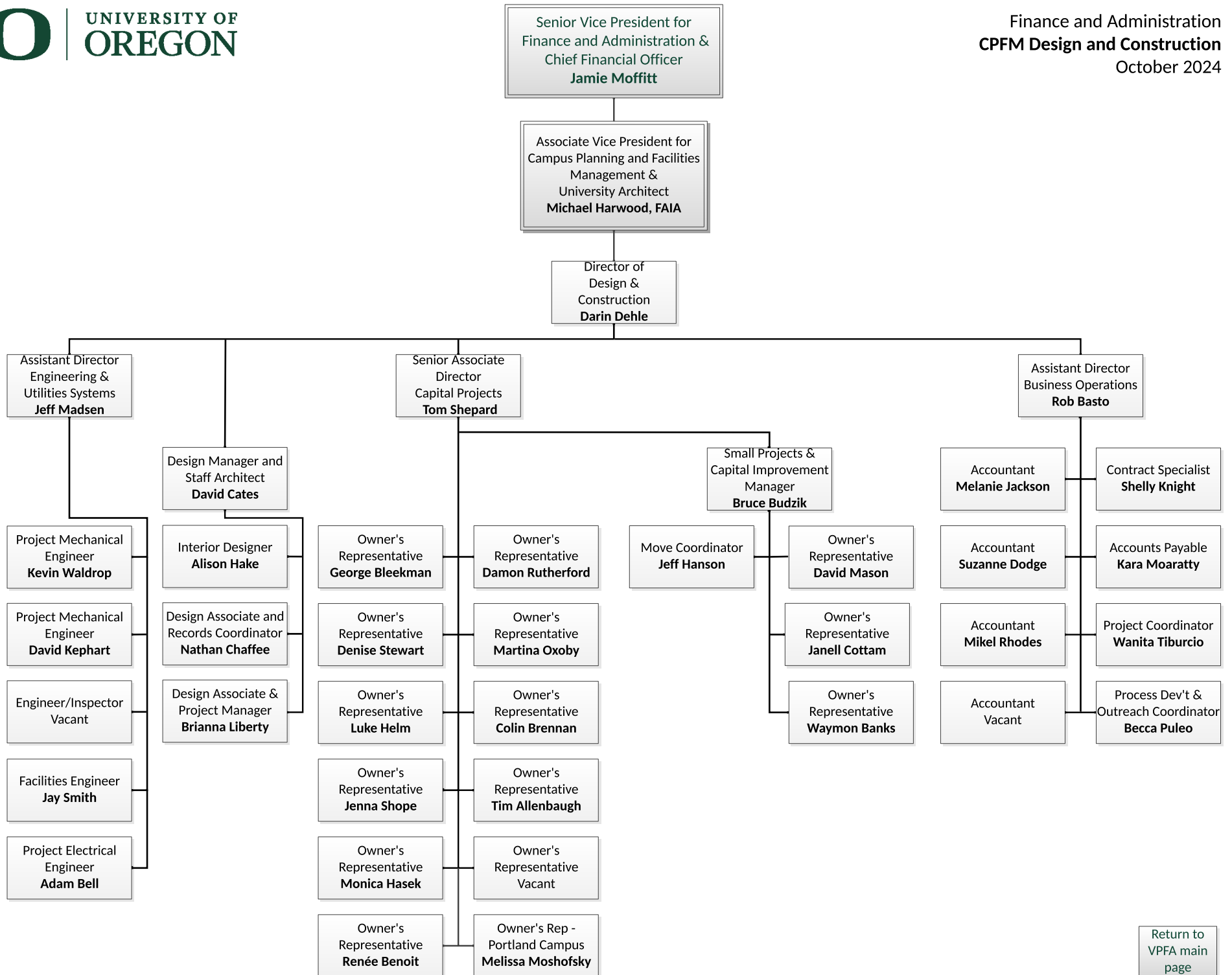
Small Projects & Capital Improvements Manager  
**Bruce Budzik**

Assistant Director of Campus Planning  
**Aaron Olsen**

Real Estate and Leasing Manager  
**Melinda Seeley**

Assistant Director of Space Management  
**Esther Foss**

[Return to VPFA main page](#)



Senior Vice President for  
 Finance and Administration &  
 Chief Financial Officer  
**Jamie Moffitt**

Associate Vice President for  
 Campus Planning and Facilities  
 Management &  
 University Architect  
**Michael Harwood, FAIA**

Director of  
 Utilities & Energy  
**Steve Mital**

Associate Director  
 Utilities Operations  
**Paul Langley**

Office Specialist  
**Desiree Higgins**

Associate Director  
 Utilities Electrical  
**Rick Tabor**

Utilities Maintenance  
 Program Manager  
**Robert 'Kyle' Wilson**

Administrative  
 Program Specialist  
**Misty Kasper**

Program Technician  
 Vacant

Instrumentation &  
 Controls Manager  
*Open until filled*

Engineer Utilities  
*Open until filled*

Electrical and Control  
 System Tech  
**Dave Harris**

Electrical and Control  
 System Tech  
**Matthew Smith**

Electrical and Control  
 System Tech  
**Jered Lewis**

Electrical and Control  
 System Tech  
**Kai Adams**

Electrical and Control  
 System Tech  
**Matthew Paeschke**

General Maintenance  
 Mechanic  
 Vacant

Co-Generation  
 Engineer  
**Bowen Garner**

Co-Generation  
 Engineer  
**Gary Malone**

Co-Generation  
 Engineer  
**Jay Van Orman**

Co-Generation  
 Engineer  
**Kiles White**

Pipe and Steamfitter  
**Rick Schwab**

Co-Generation  
 Engineer  
**R. James Dumas**

Co-Generation  
 Engineer  
**Steven Page**

Co-Generation  
 Engineer  
**Cory Hime**

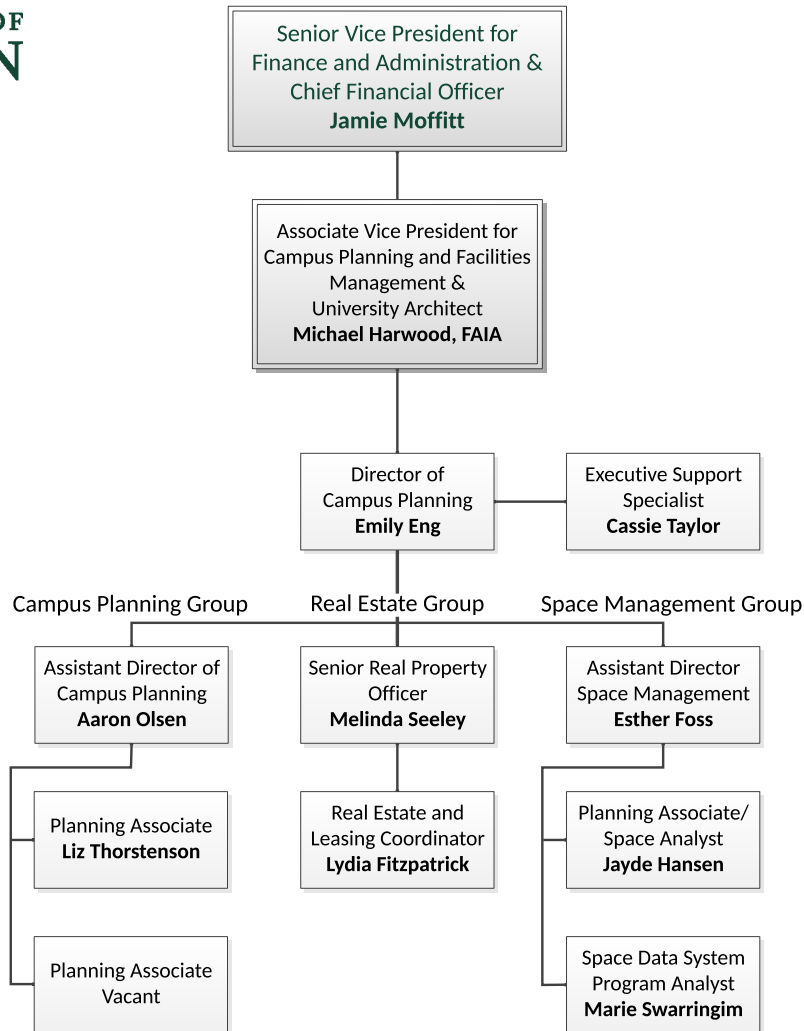
Co-Generation  
 Engineer  
**Ross Kalal**

Co-Generation  
 Engineer  
**Nick Nighswonger**

Co-Generation  
 Engineer  
**Jeff Day**

General Maintenance  
 Mechanic  
**Alastair Millie**

General Maintenance  
 Mechanic  
**Stephen Klatt**





Senior Vice President for  
Finance and Administration &  
Chief Financial Officer  
**Jamie Moffitt**

Associate Vice President for  
Campus Planning and Facilities  
Management &  
University Architect  
**Michael Harwood, FAIA**

Director of  
Sustainability  
**Steve Mital**

[Return to  
VPFA main  
page](#)

Assistant Director  
**Sarah Stoeckl**

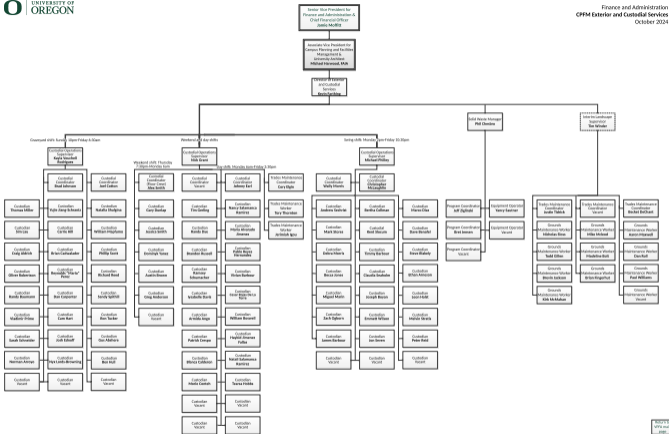
Campus Natural  
Areas Steward  
**Emily Hamblen**

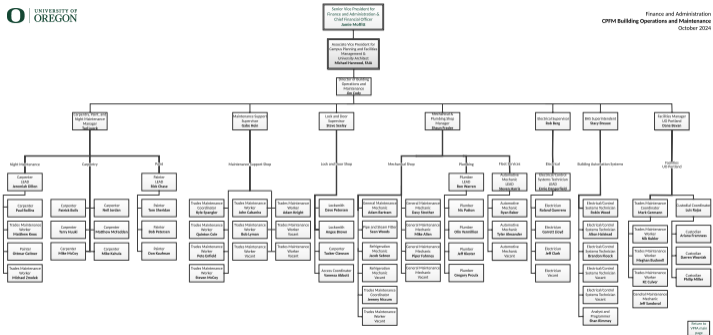
Program Coordinator  
**Katie Lucca**

Program Assistant  
**Cimmeron Gillespie**

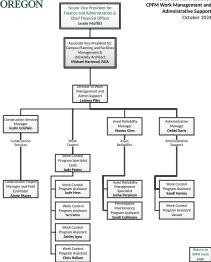
Energy Analyst  
**Ryan Haag**

Energy Program  
Specialist  
**Madeline  
Jonas-Lowery**

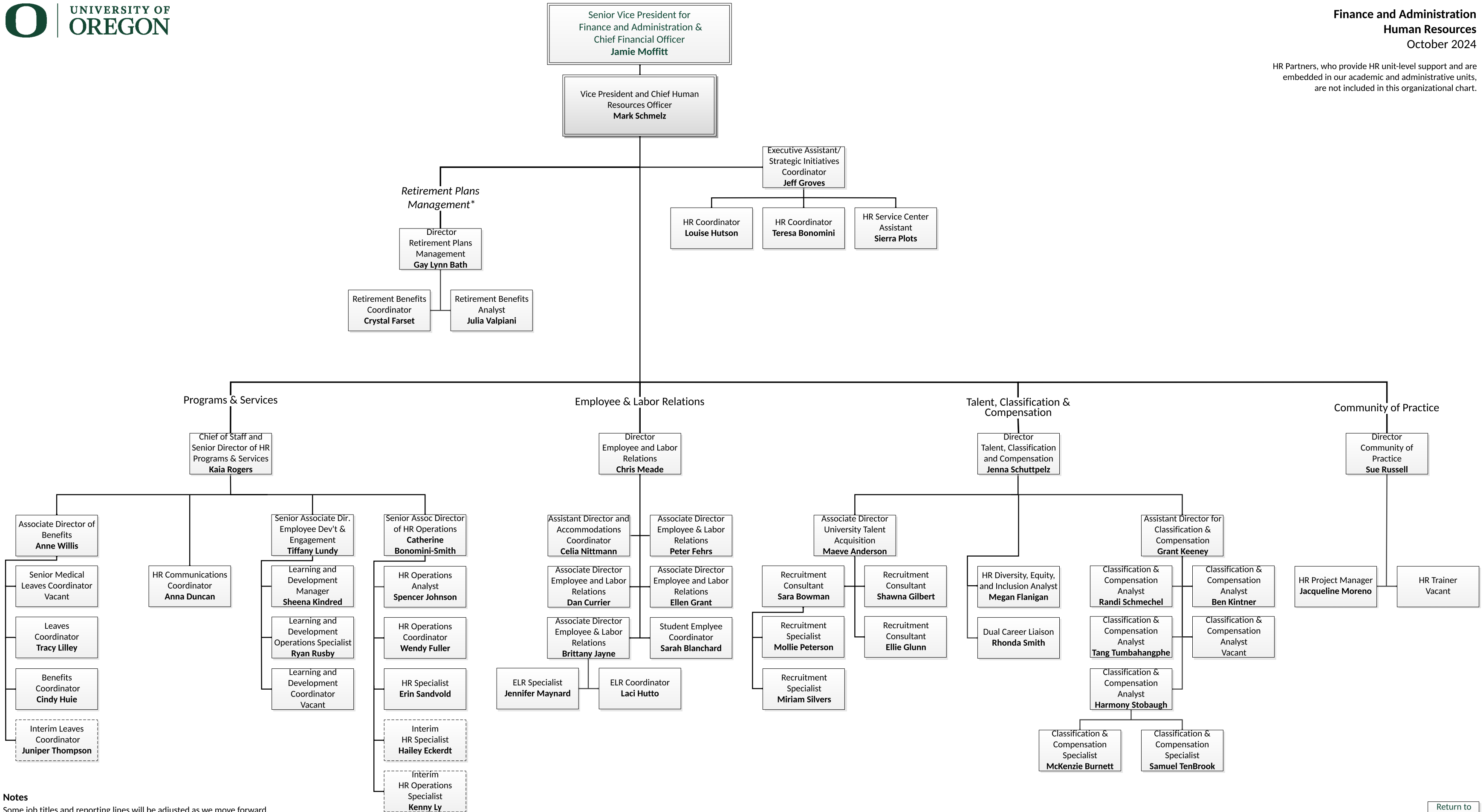






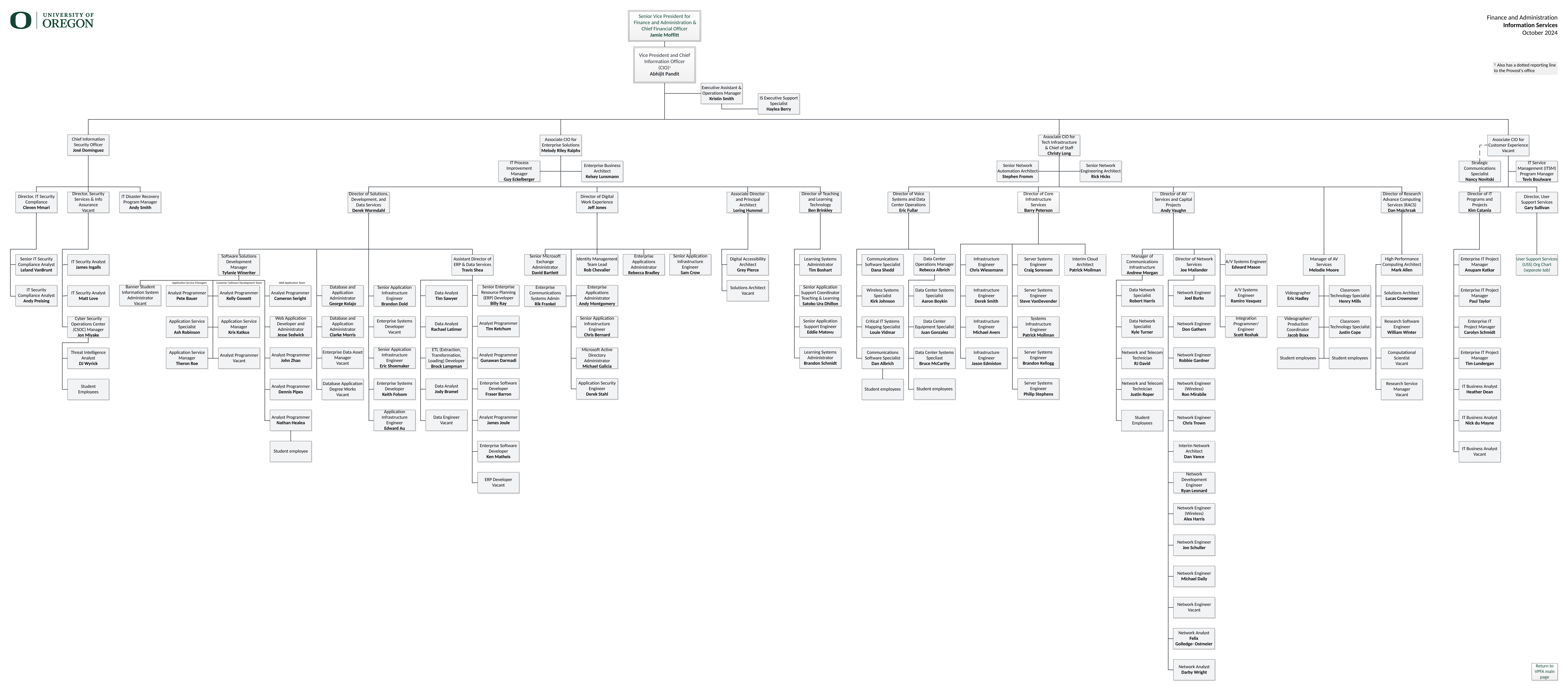


HR Partners, who provide HR unit-level support and are embedded in our academic and administrative units, are not included in this organizational chart.

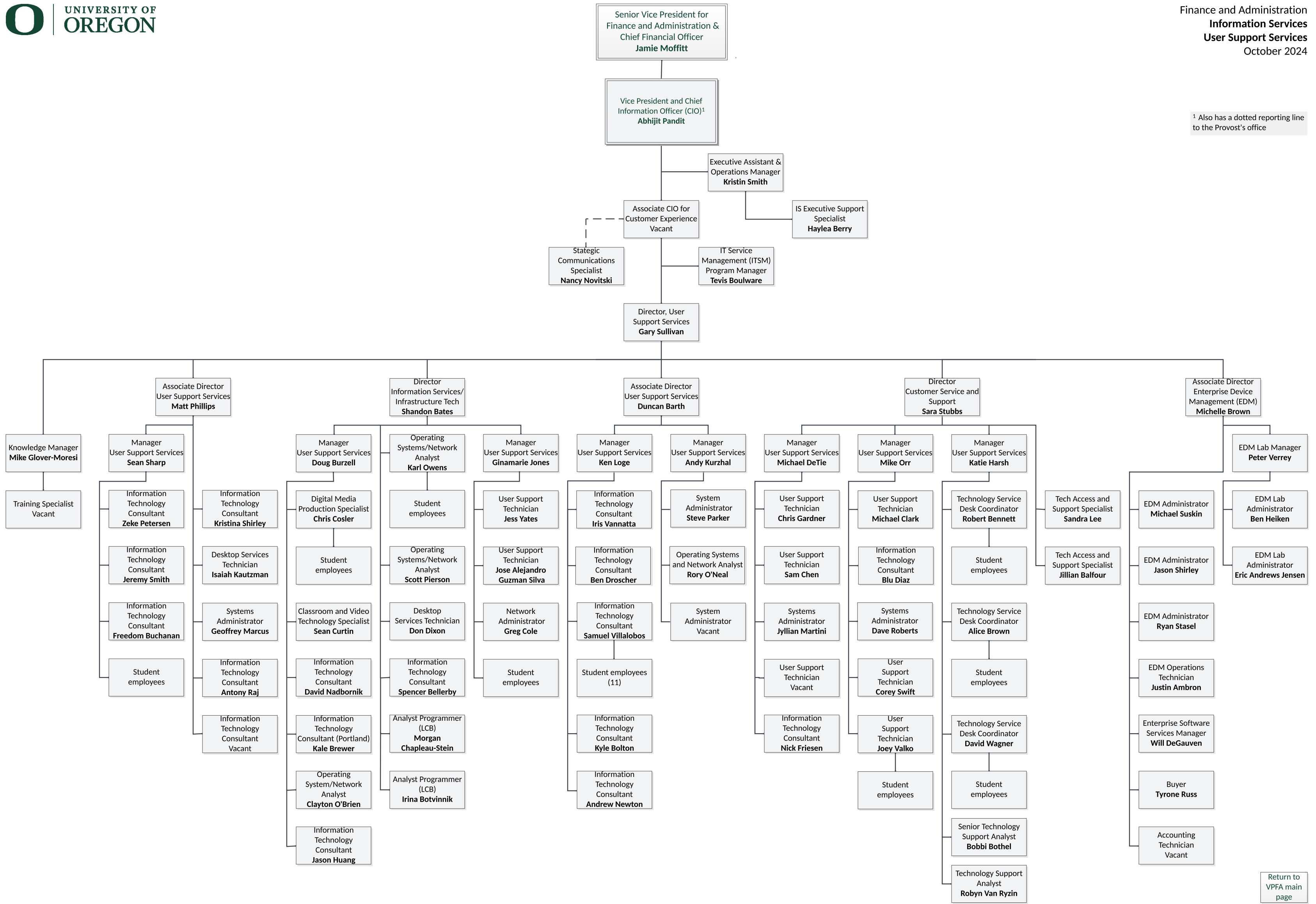


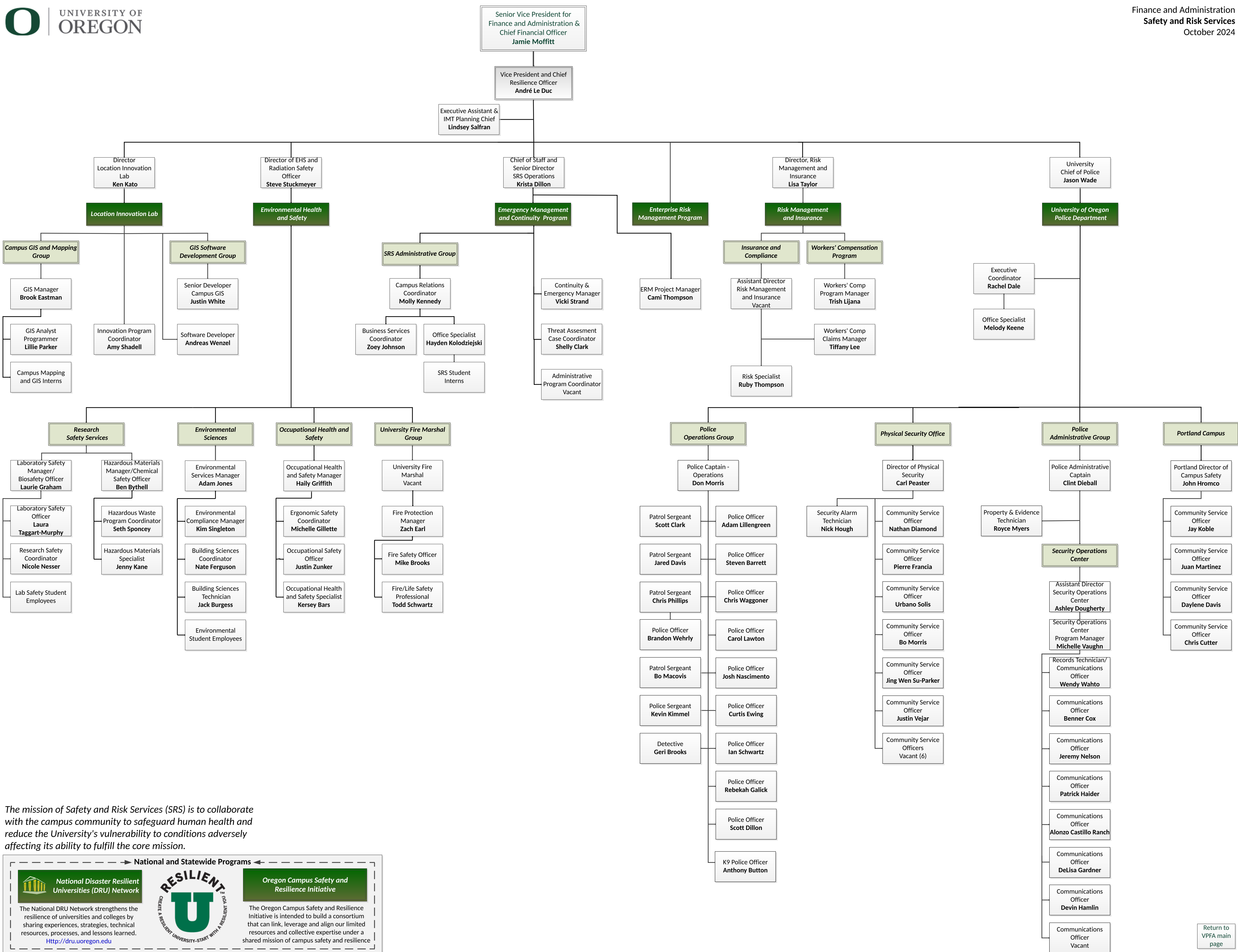
**Notes**  
 Some job titles and reporting lines will be adjusted as we move forward.  
 Interim (temporary) positions are indicated with dotted lines.  
 \* Retirement Plans Management serves seven public higher education institutions in Oregon.

<sup>1</sup> Also has a dotted reporting line to the Provost's office



<sup>1</sup> Also has a dotted reporting line to the Provost's office





The mission of Safety and Risk Services (SRS) is to collaborate with the campus community to safeguard human health and reduce the University's vulnerability to conditions adversely affecting its ability to fulfill the core mission.

**National and Statewide Programs**

**National Disaster Resilient Universities (DRU) Network**

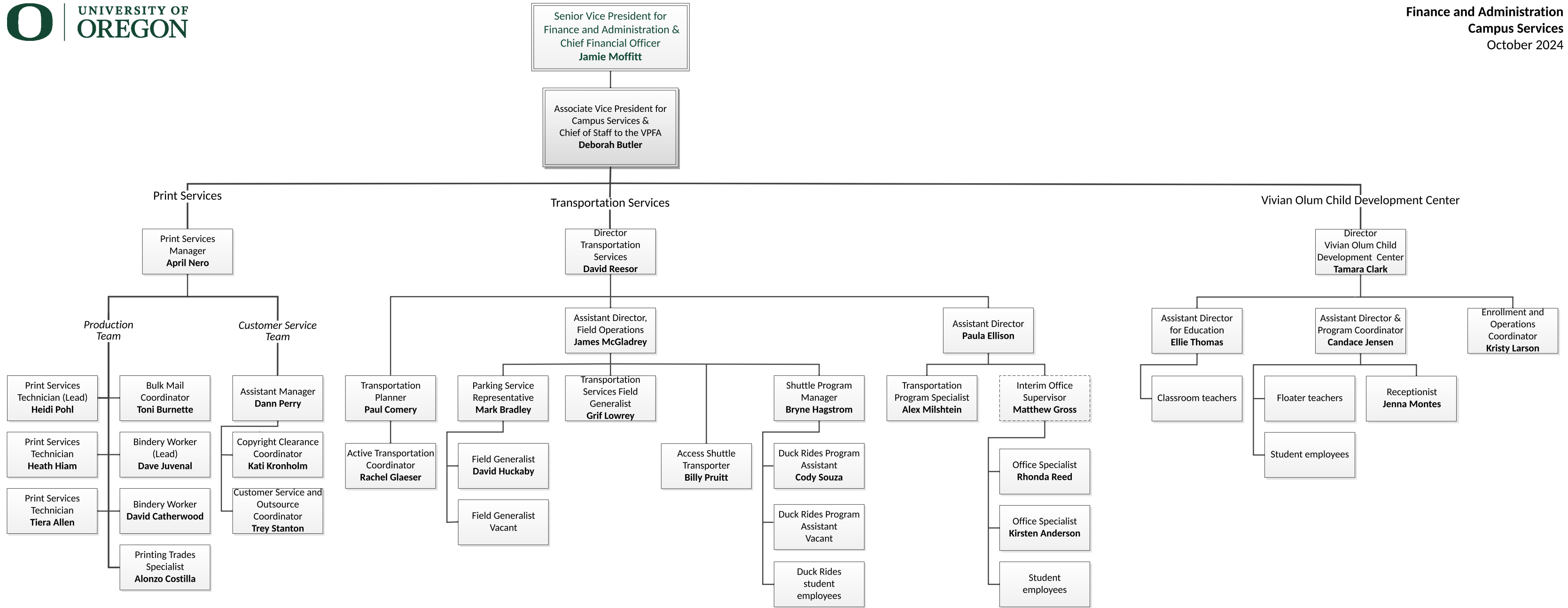
The National DRU Network strengthens the resilience of universities and colleges by sharing experiences, strategies, technical resources, processes, and lessons learned.  
<http://dru.uoregon.edu>

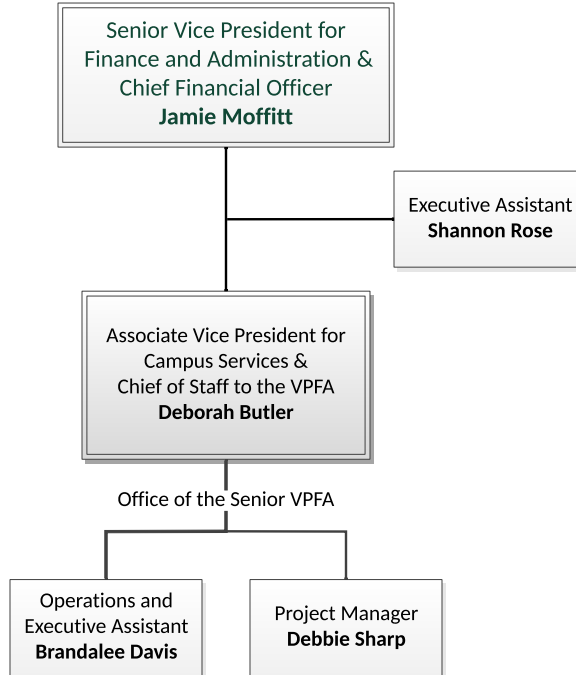
**RESILIENT U**

CREATE A RESILIENT UNIVERSITY—START WITH A RESILIENT YOU!

**Oregon Campus Safety and Resilience Initiative**

The Oregon Campus Safety and Resilience Initiative is intended to build a consortium that can link, leverage and align our limited resources and collective expertise under a shared mission of campus safety and resilience





[Return to VPFA main page](#)