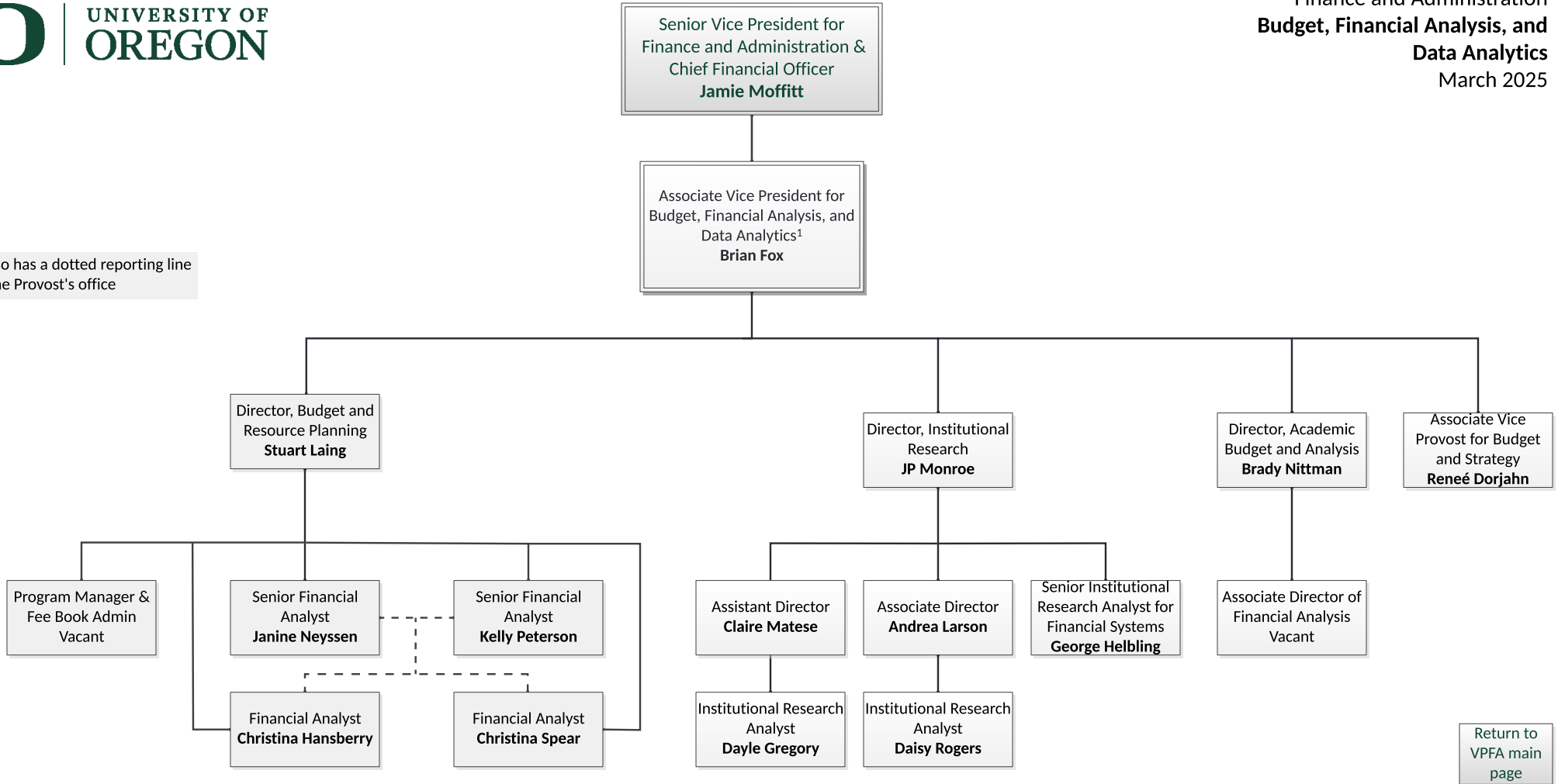
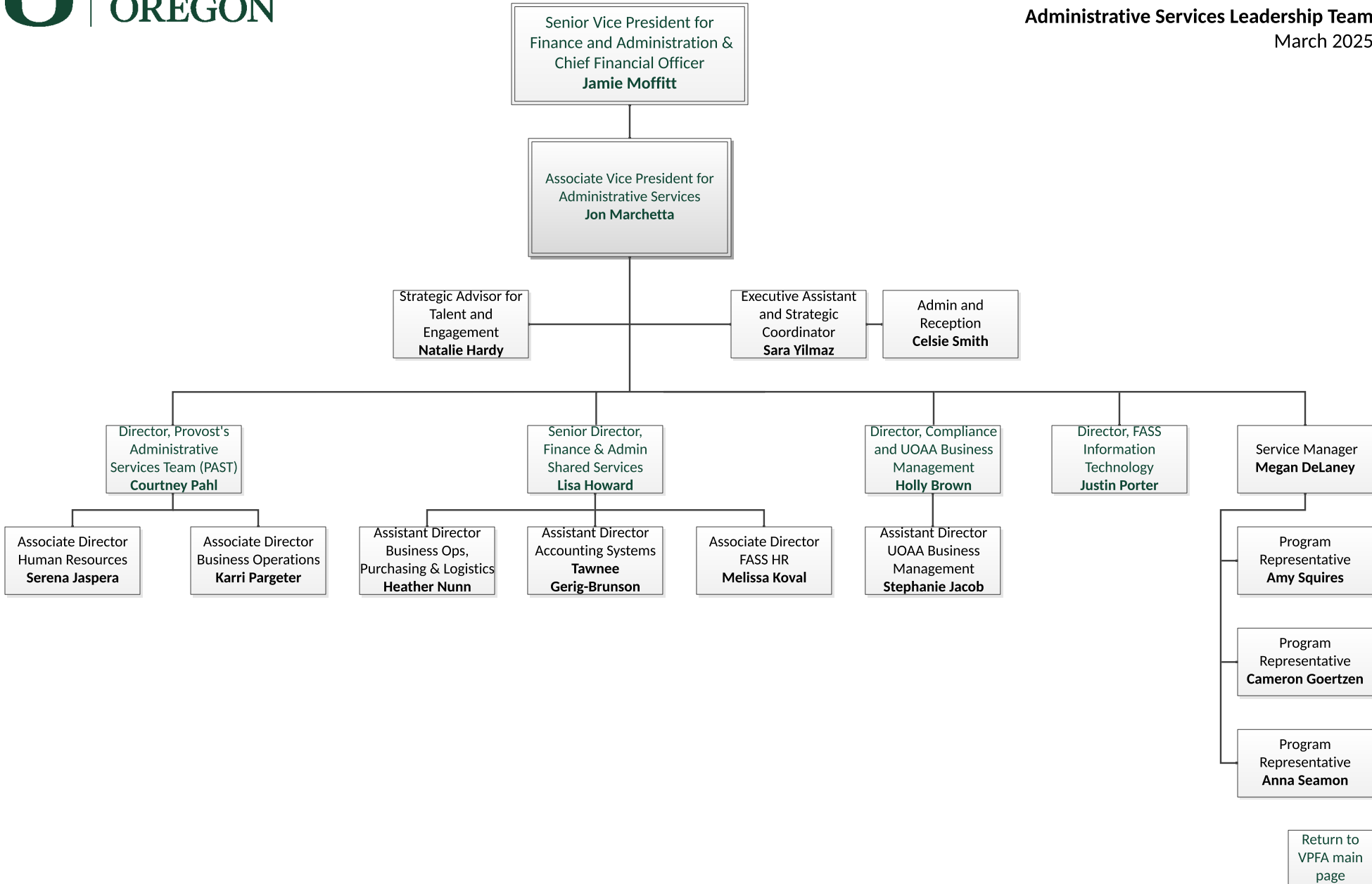


¹ Also has a dotted reporting line
to the Provost's office

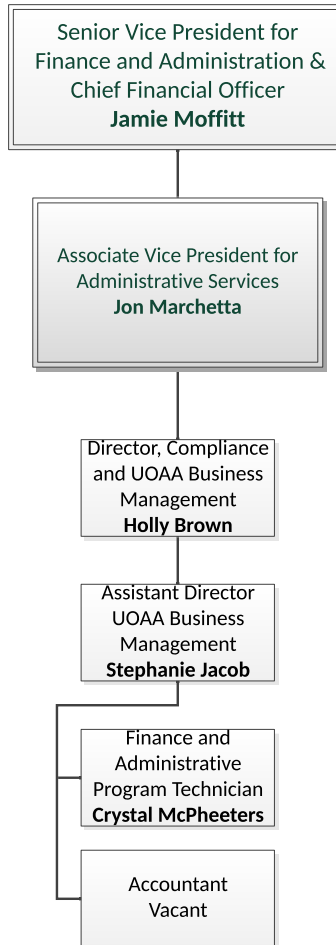




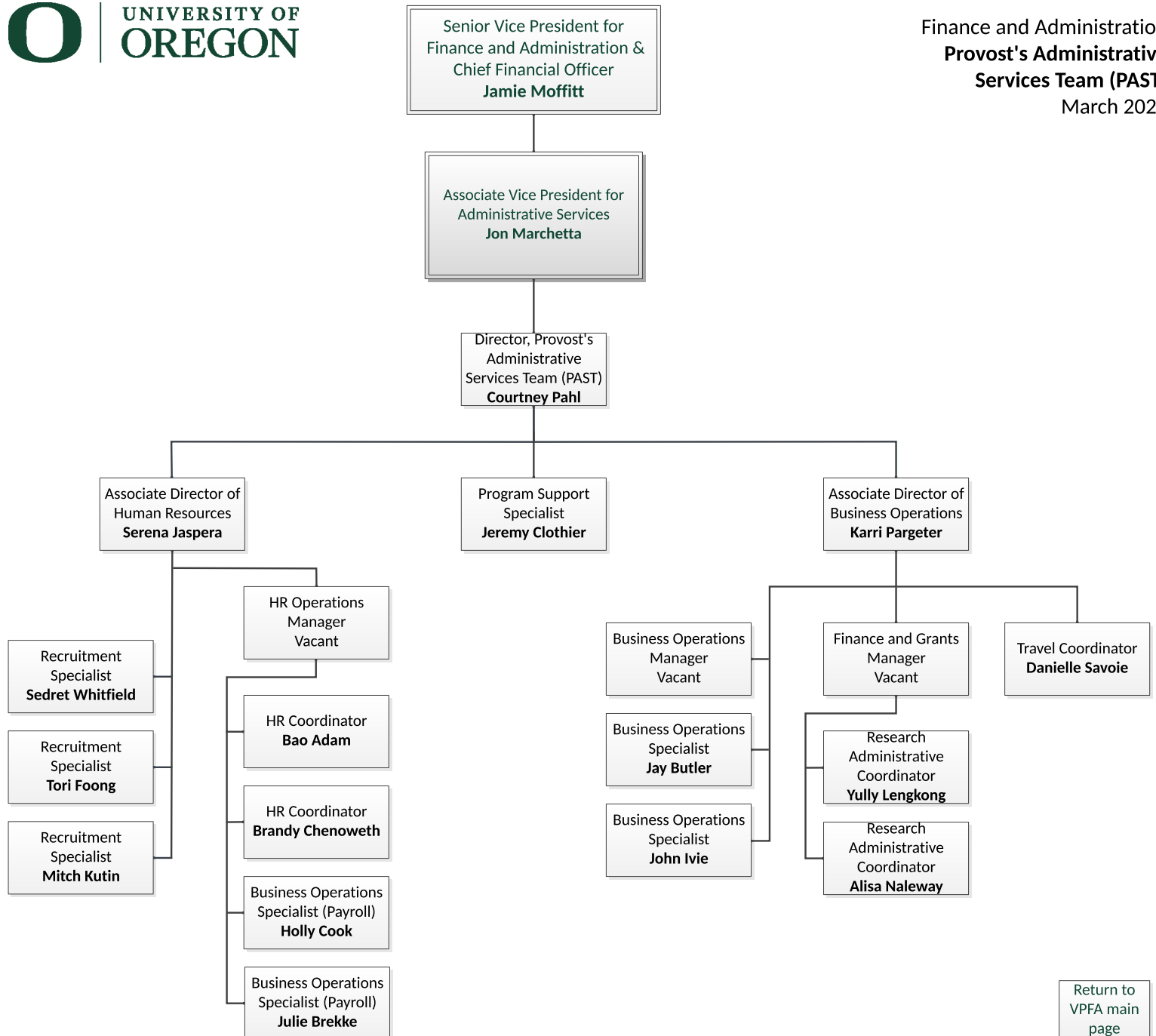


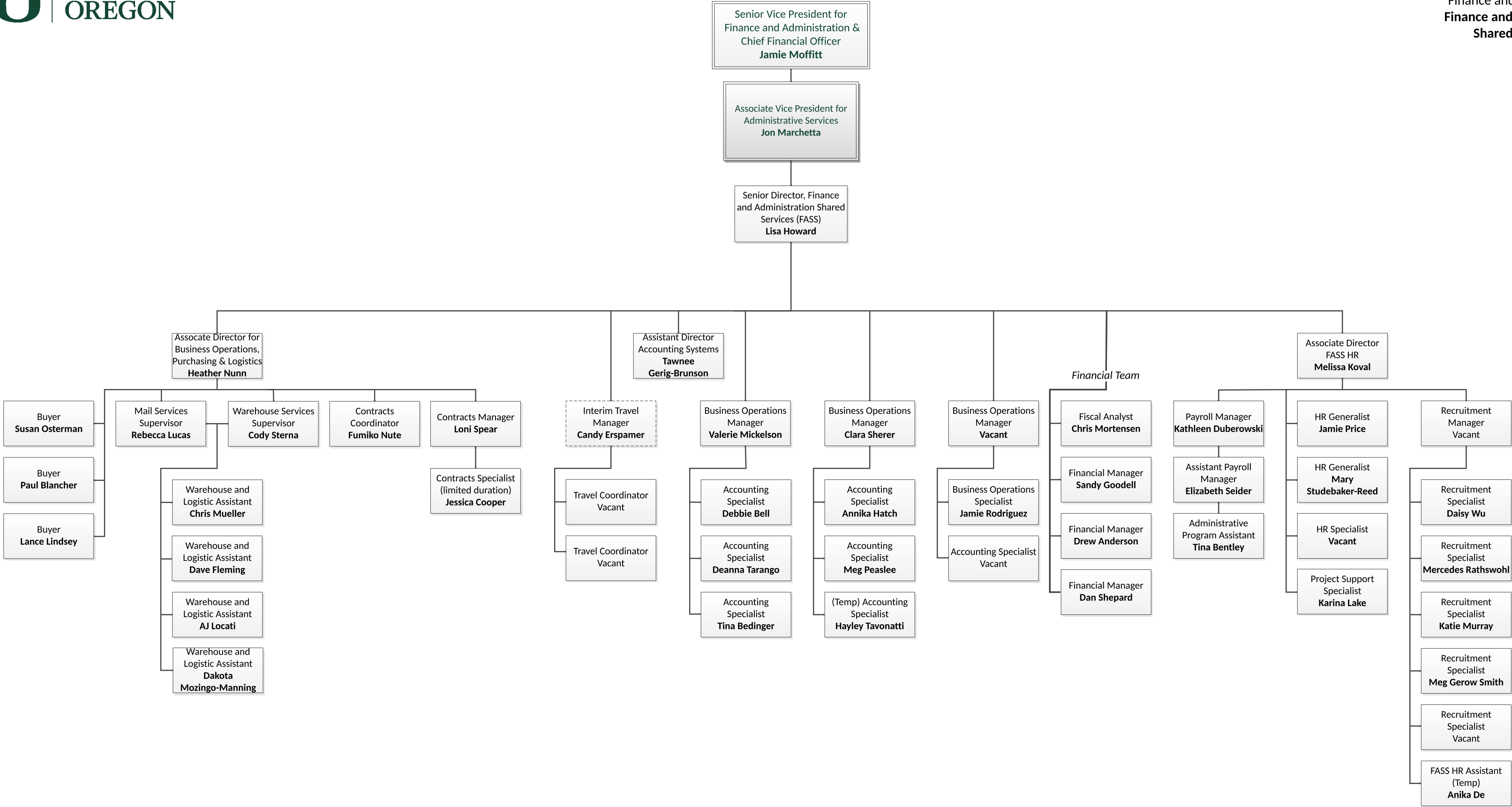
UNIVERSITY OF
OREGON

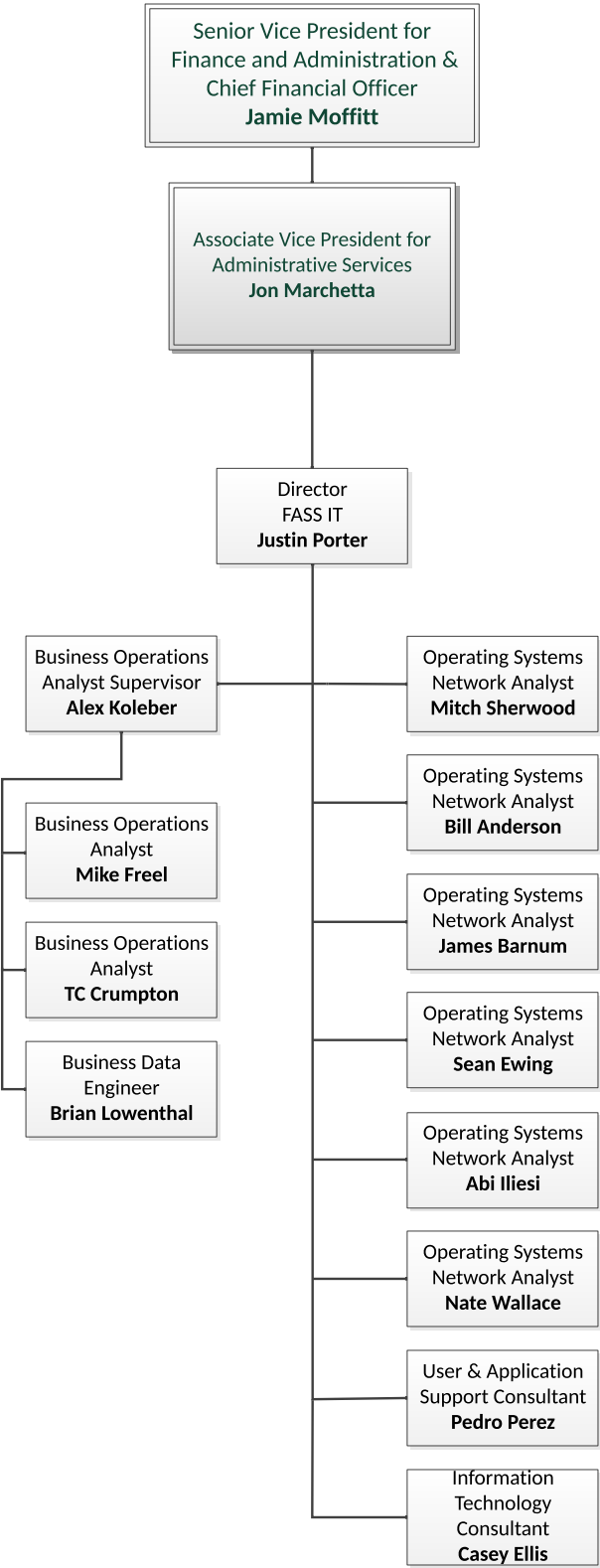
Finance and Administration
**Compliance and UOAA
Business Management**
March 2025

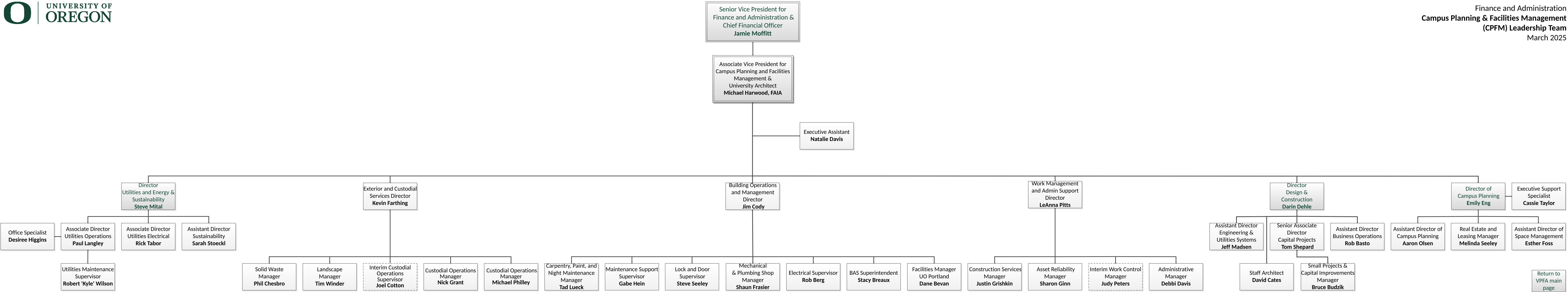


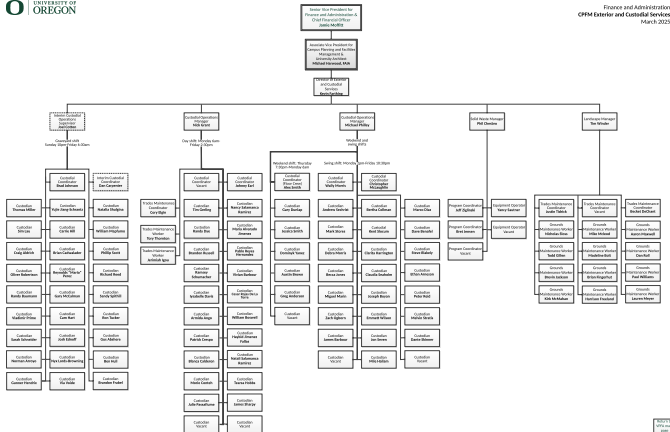
Return to
VPFA main
page

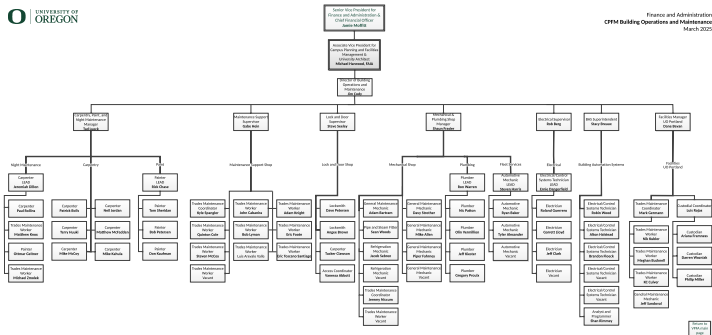




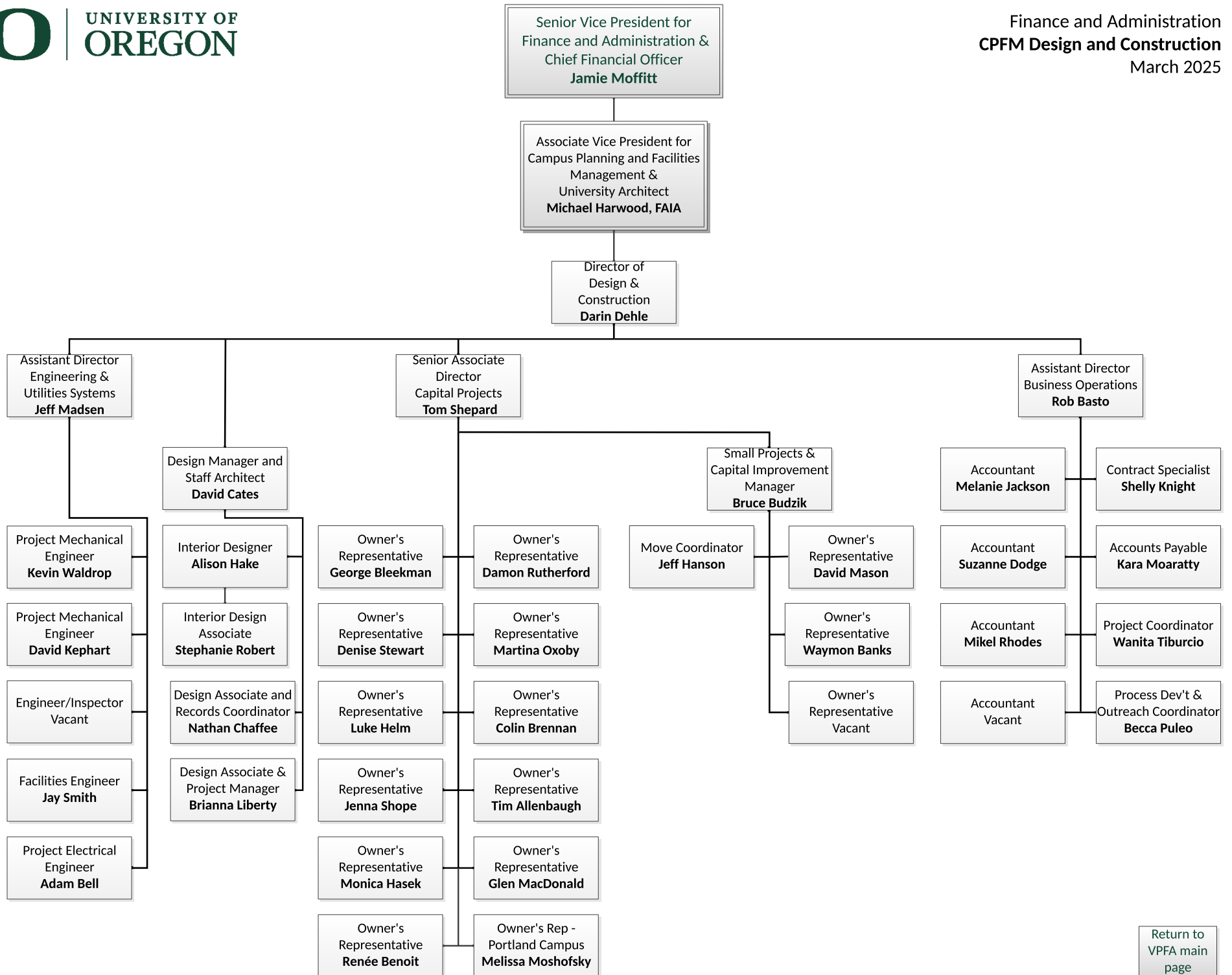


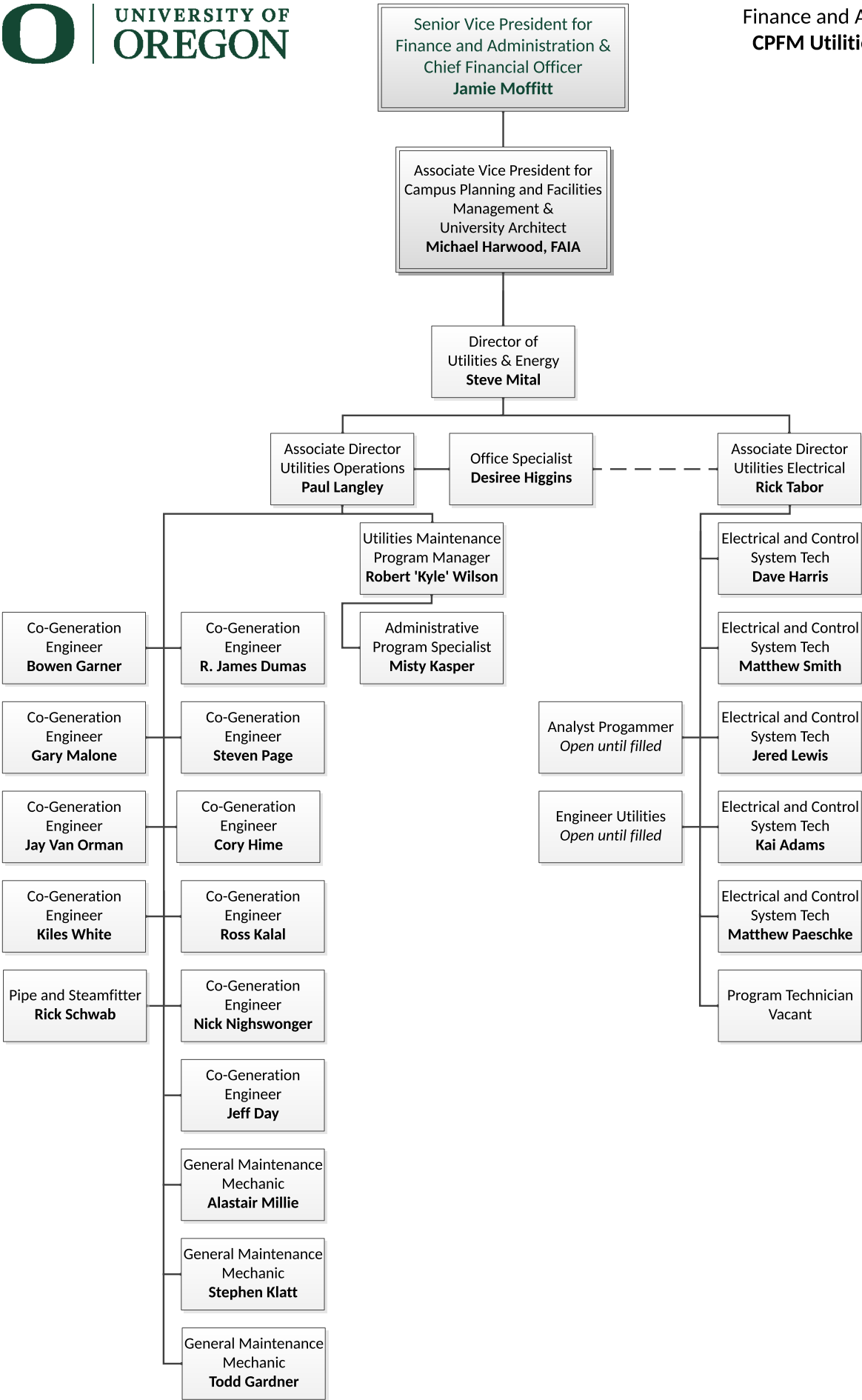


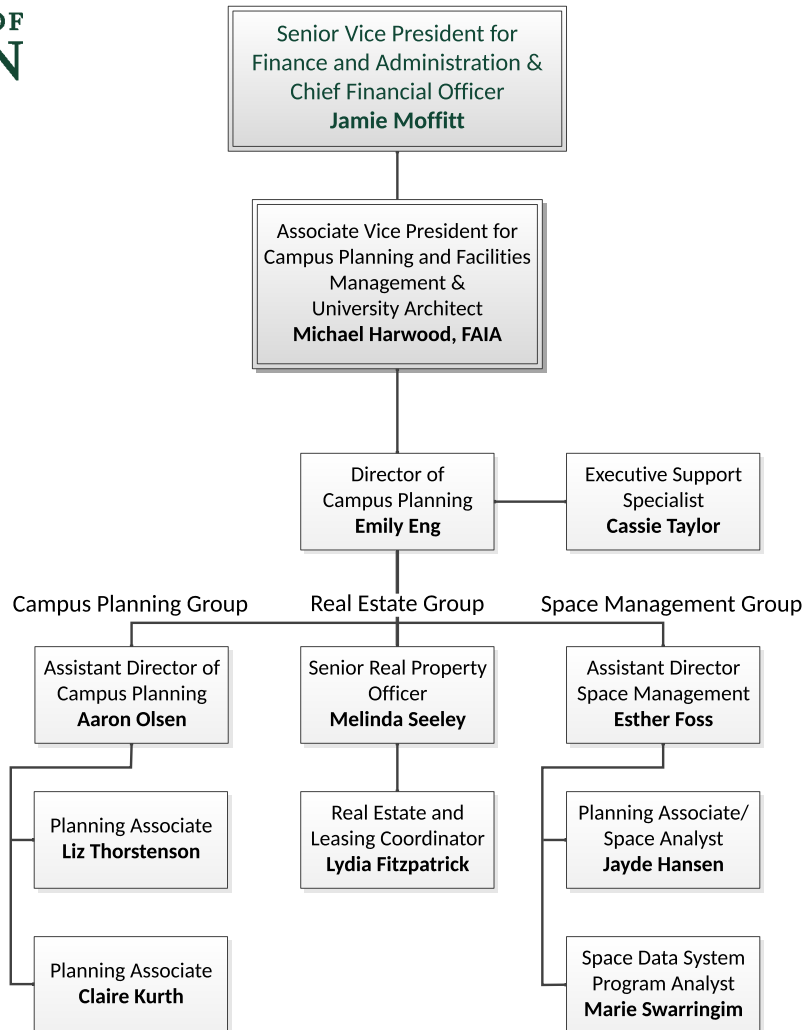


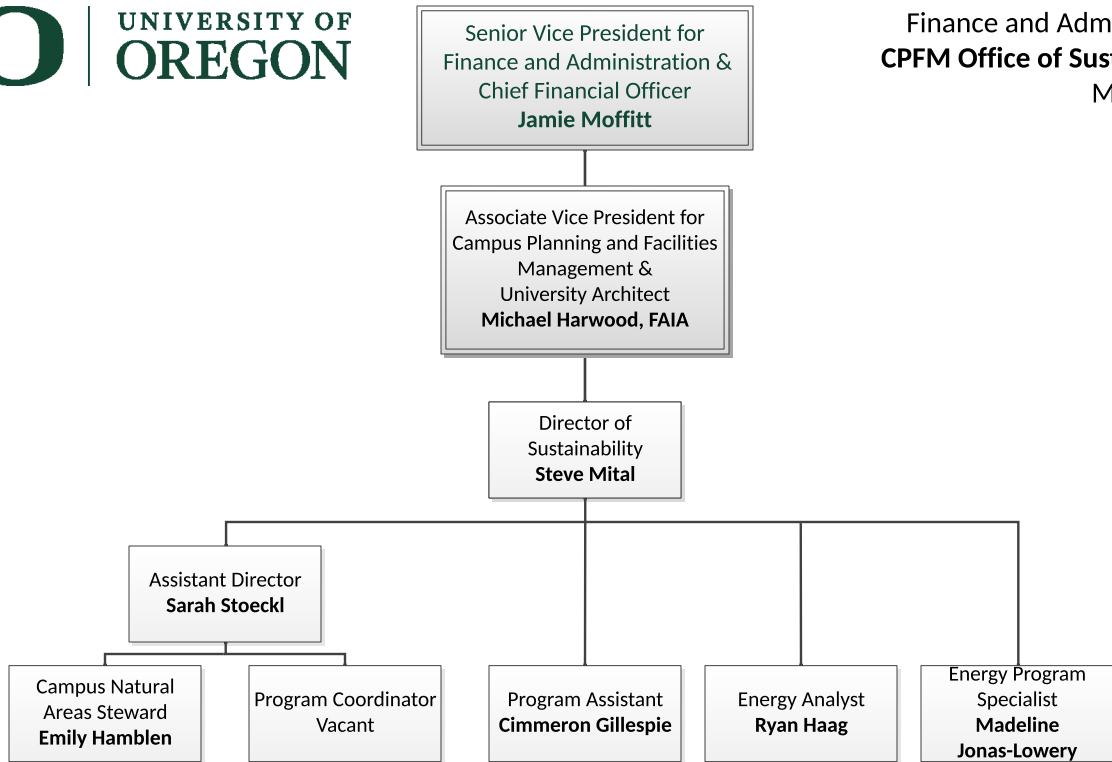






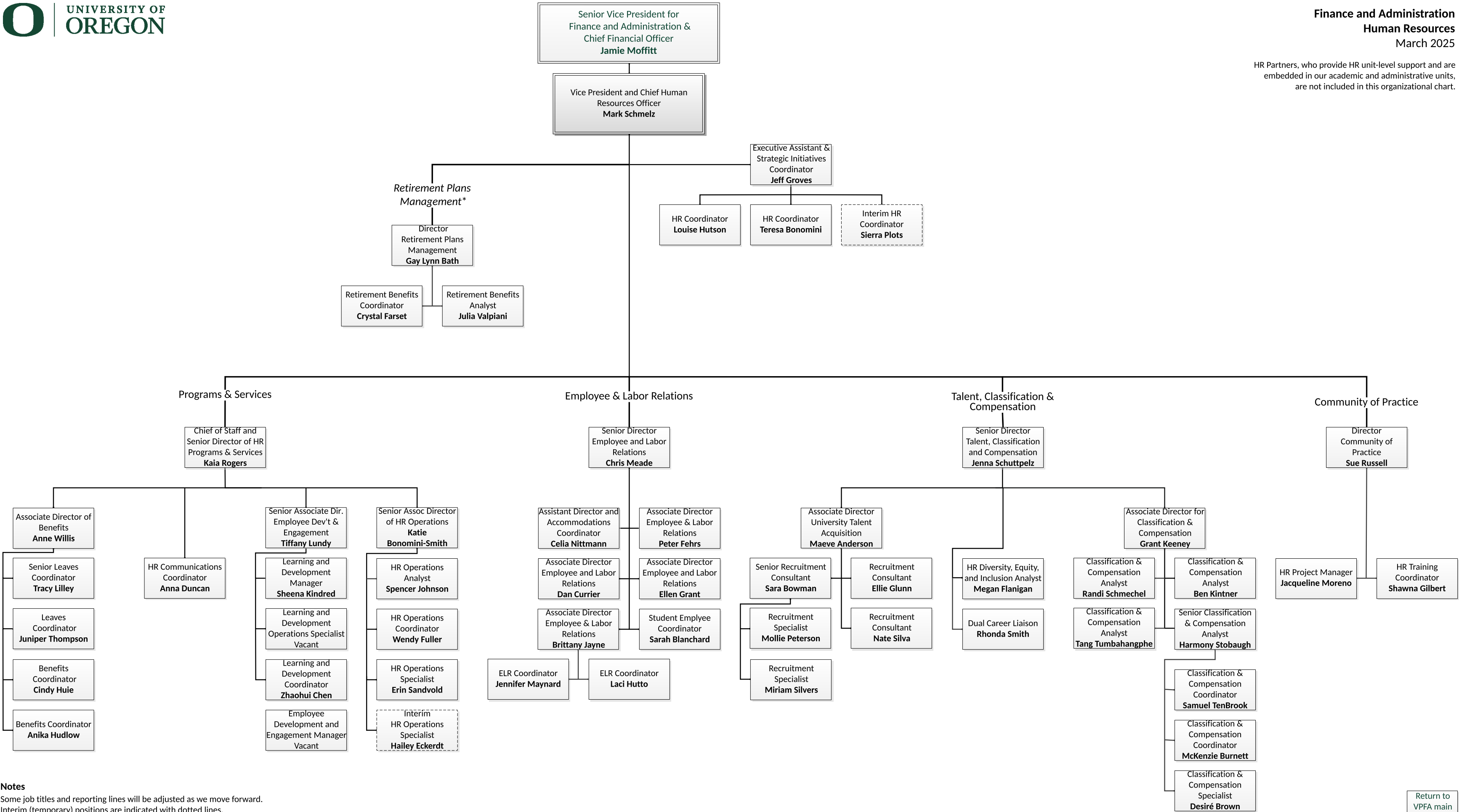






[Return to
VPFA main
page](#)

HR Partners, who provide HR unit-level support and are embedded in our academic and administrative units, are not included in this organizational chart.



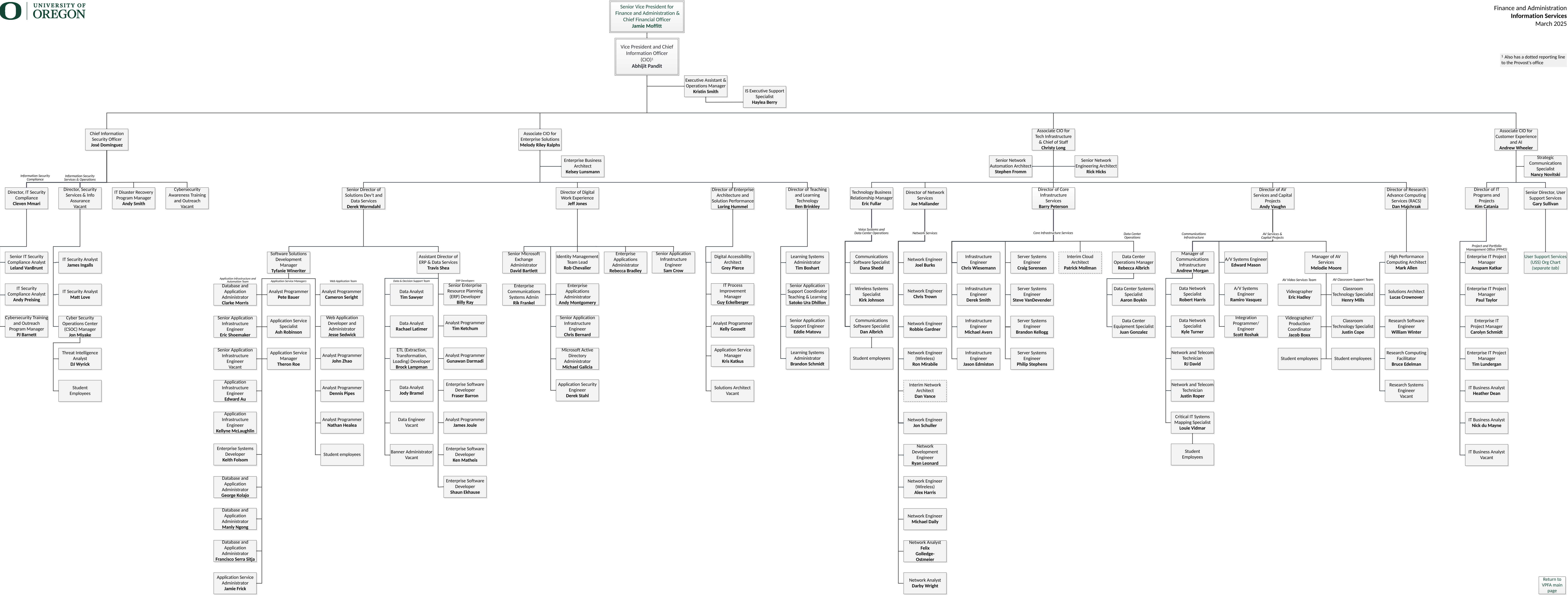
Notes

Some job titles and reporting lines will be adjusted as we move forward.

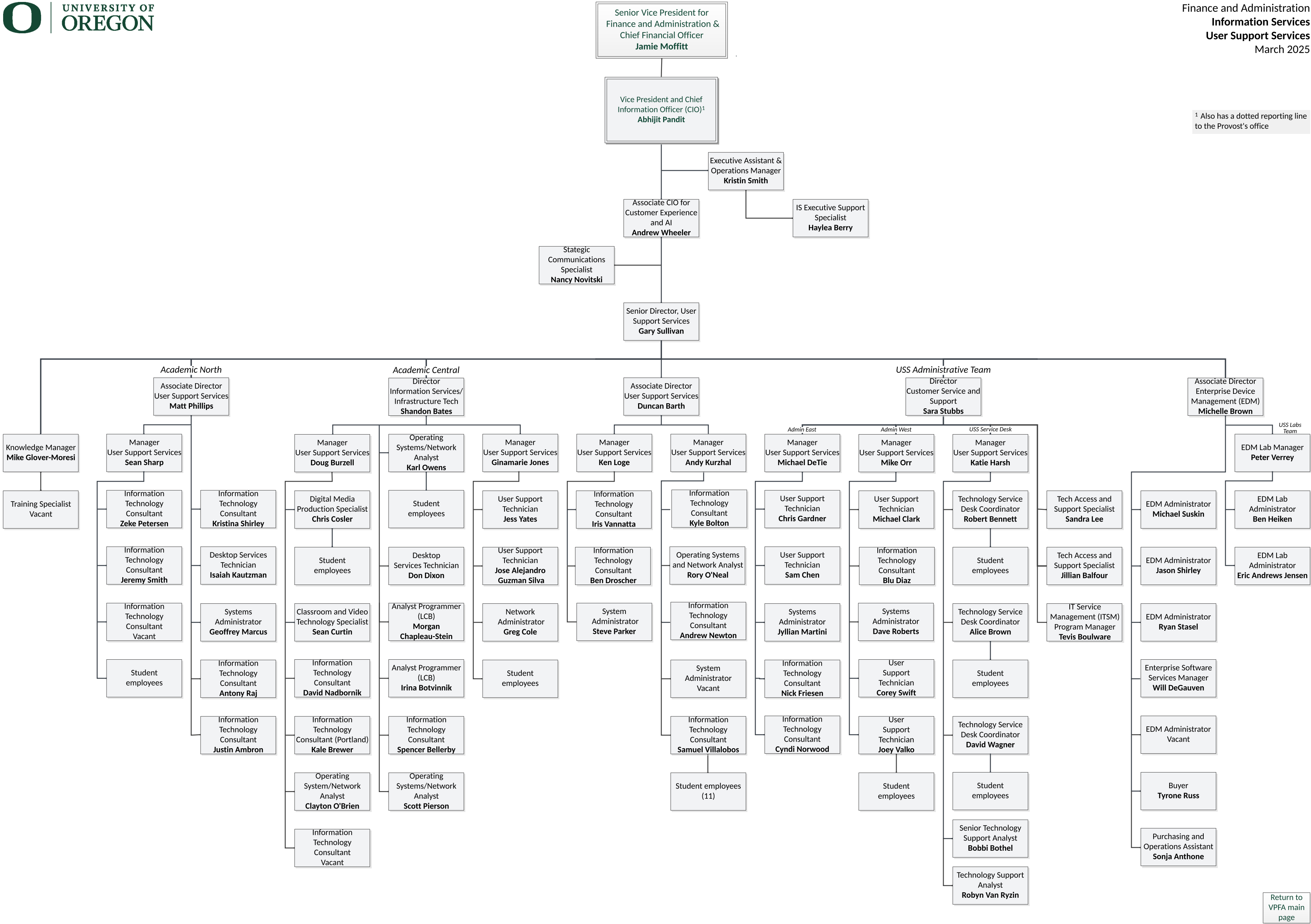
Interim (temporary) positions are indicated with dotted lines.

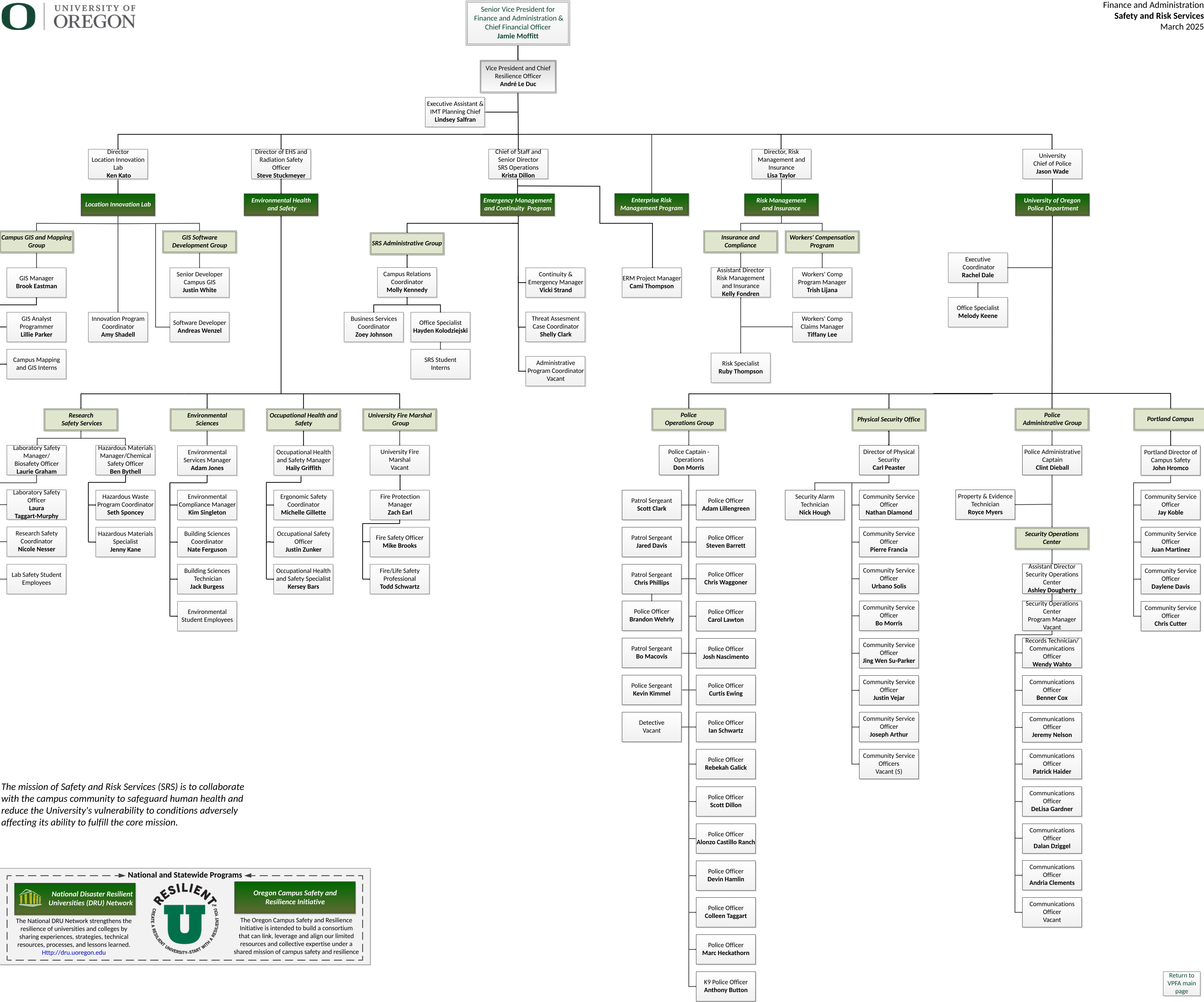
* Retirement Plans Management serves seven public higher education institutions in Oregon.

¹ Also has a dotted reporting line to the Provost's office



¹ Also has a dotted reporting line to the Provost's office






The mission of Safety and Risk Services (SRS) is to collaborate with the campus community to safeguard human health and reduce the University's vulnerability to conditions adversely affecting its ability to fulfill the core mission.



National Disaster Resilient Universities (DRU) Network

The National DRU Network strengthens the resilience of universities and colleges by sharing experiences, strategies, technical resources, and lessons learned.
<http://dru.uoregon.edu>



Oregon Campus Safety and Resilience Initiative

The Oregon Campus Safety and Resilience Initiative is intended to build a consortium that can link, leverage and align our limited resources and collective expertise under a shared mission of campus safety and resilience

