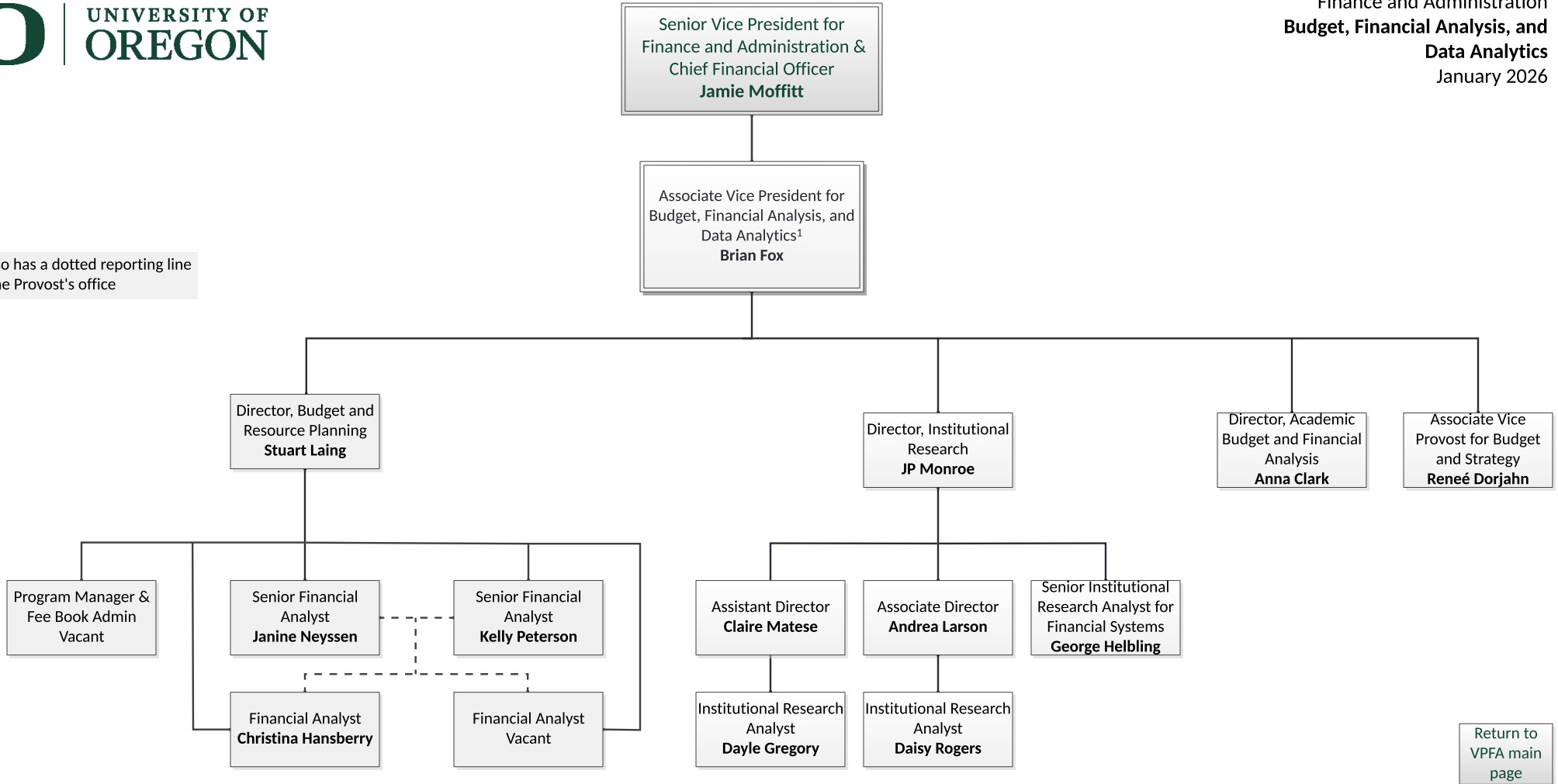
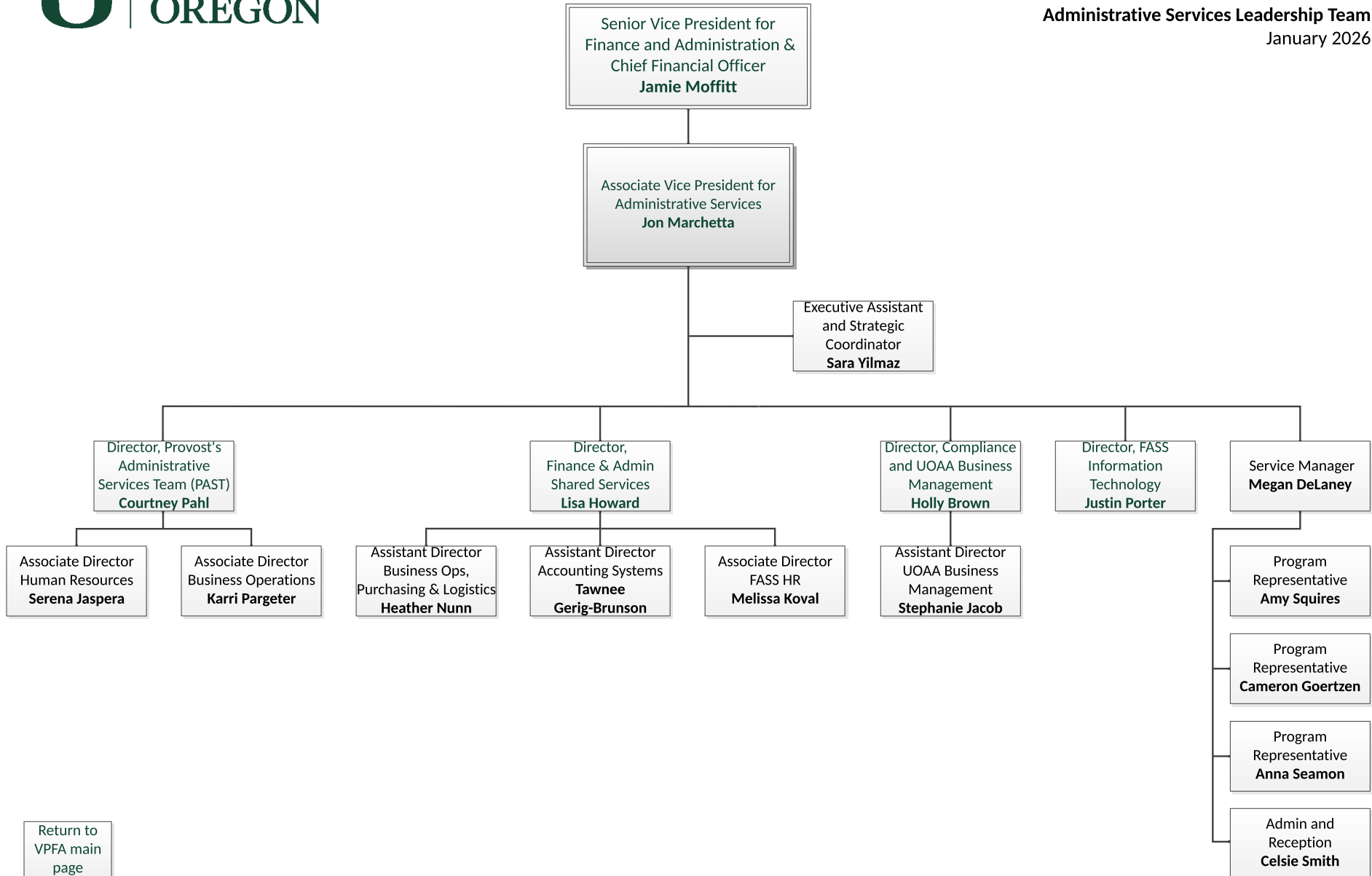
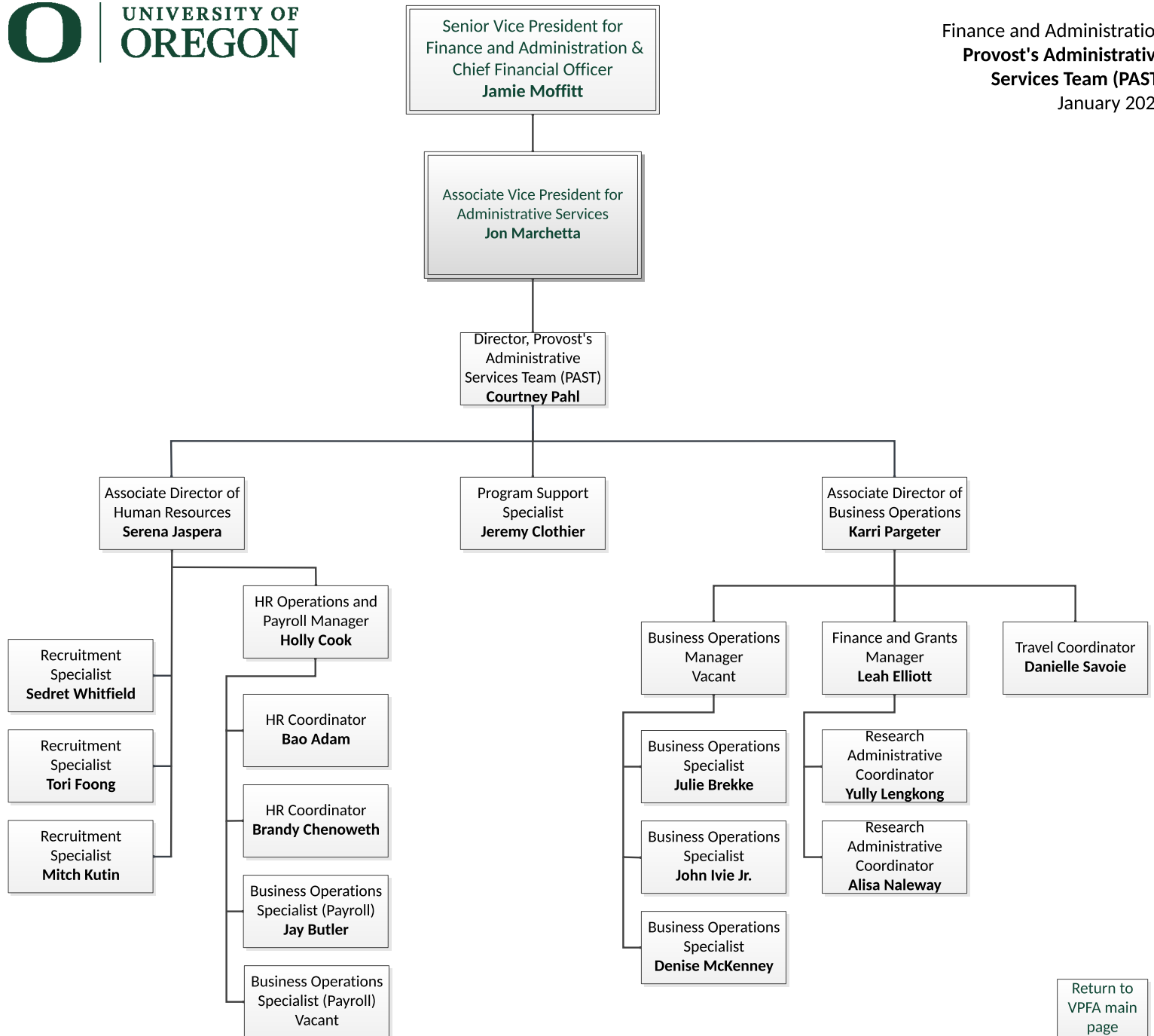
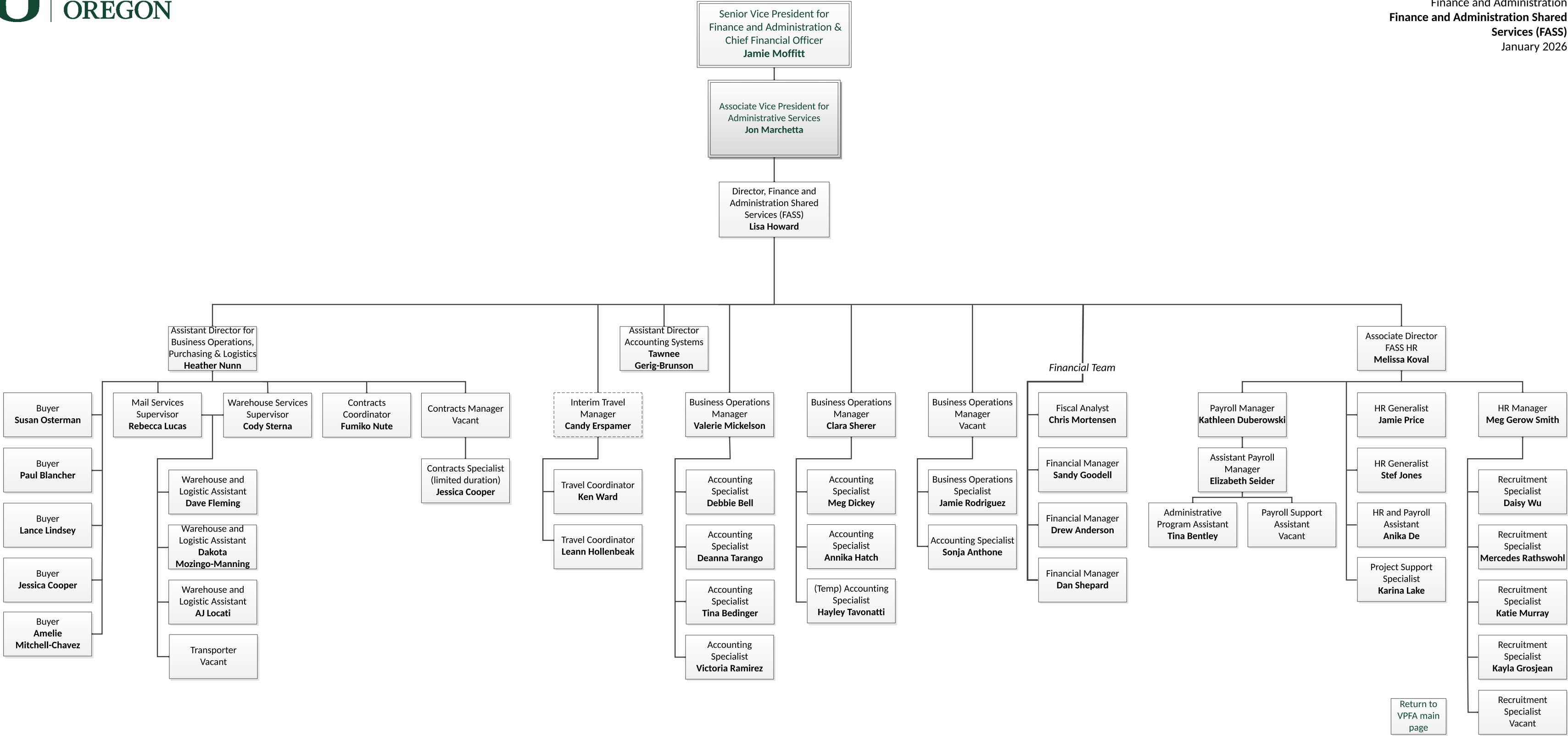


¹ Also has a dotted reporting line
to the Provost's office





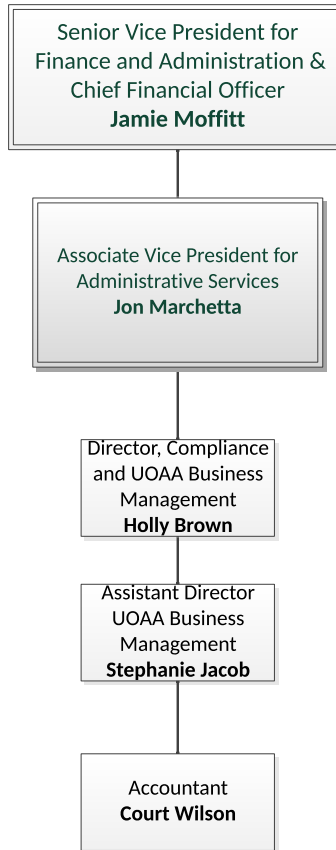


Return to
VPFA main
page

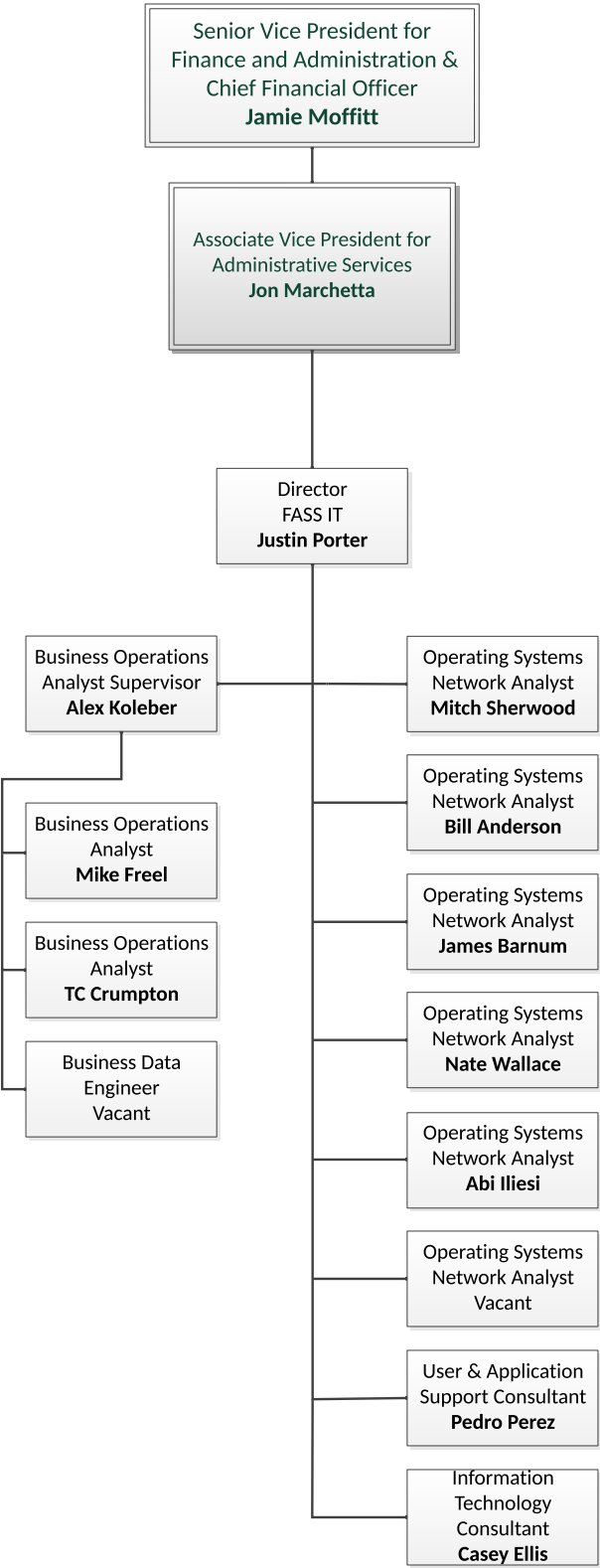


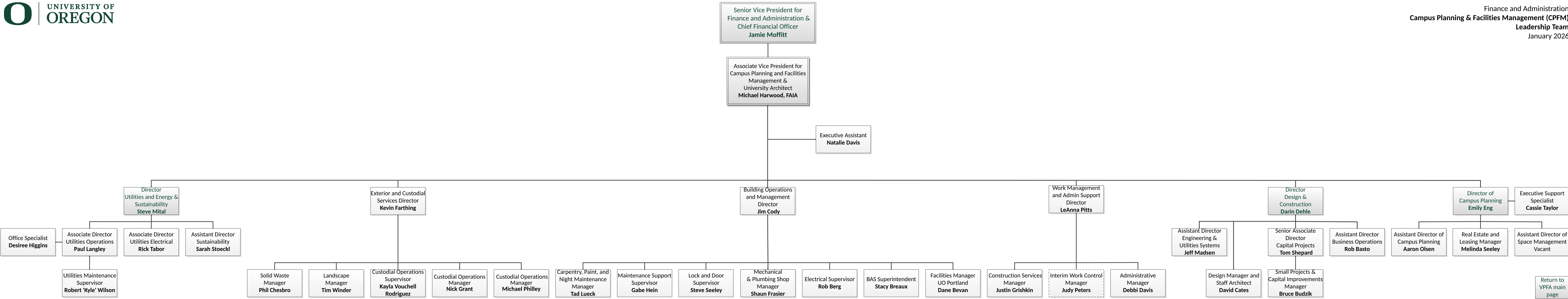
UNIVERSITY OF
OREGON

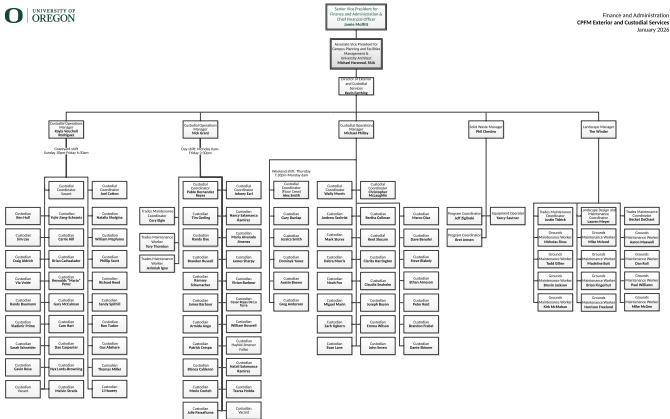
Finance and Administration
**Compliance and UOAA
Business Management**
January 2026

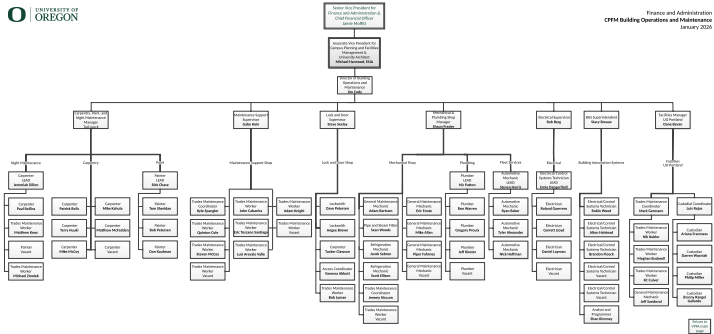


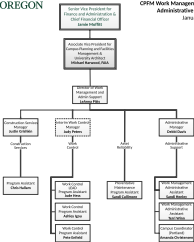
[Return to
VPFA main
page](#)

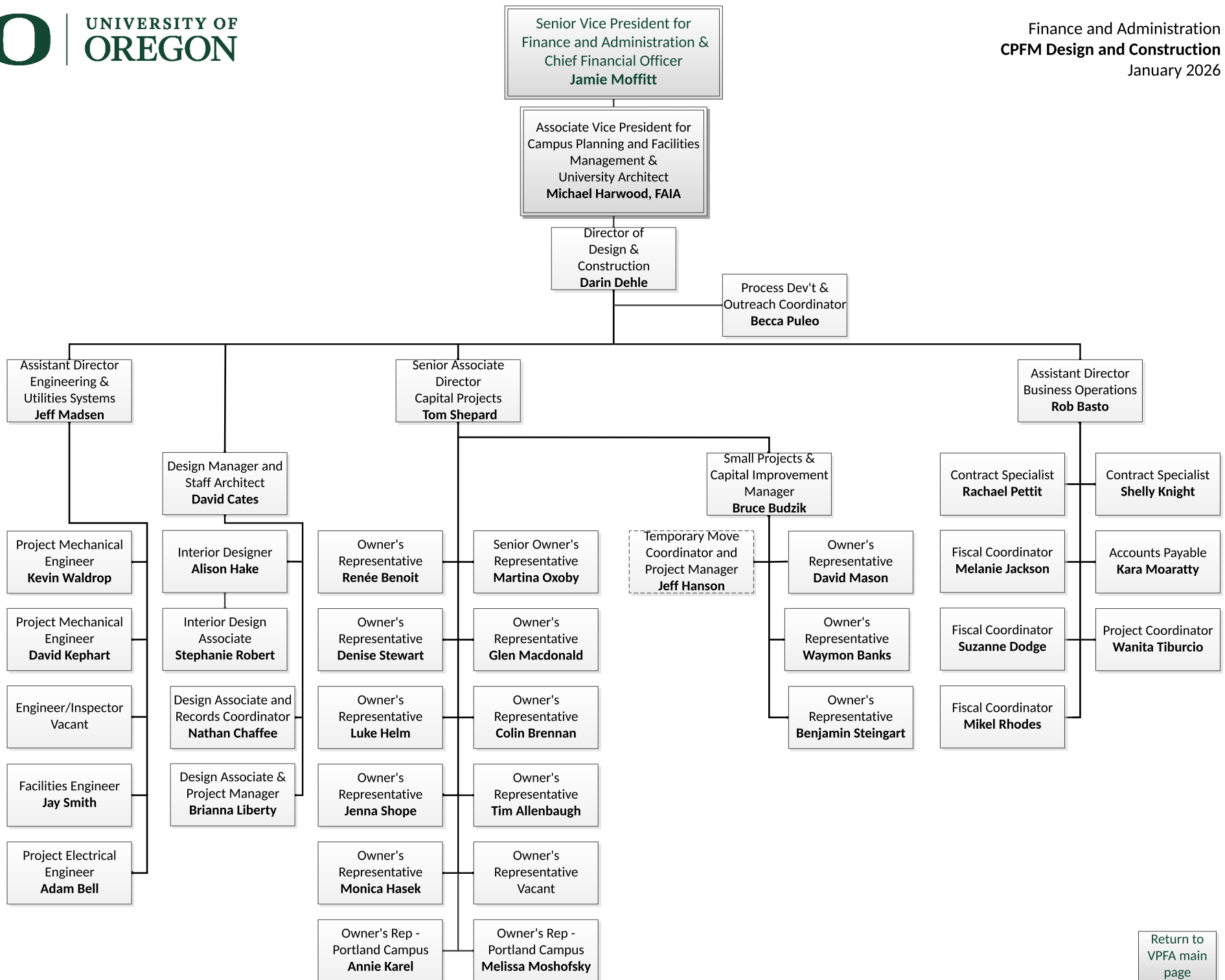


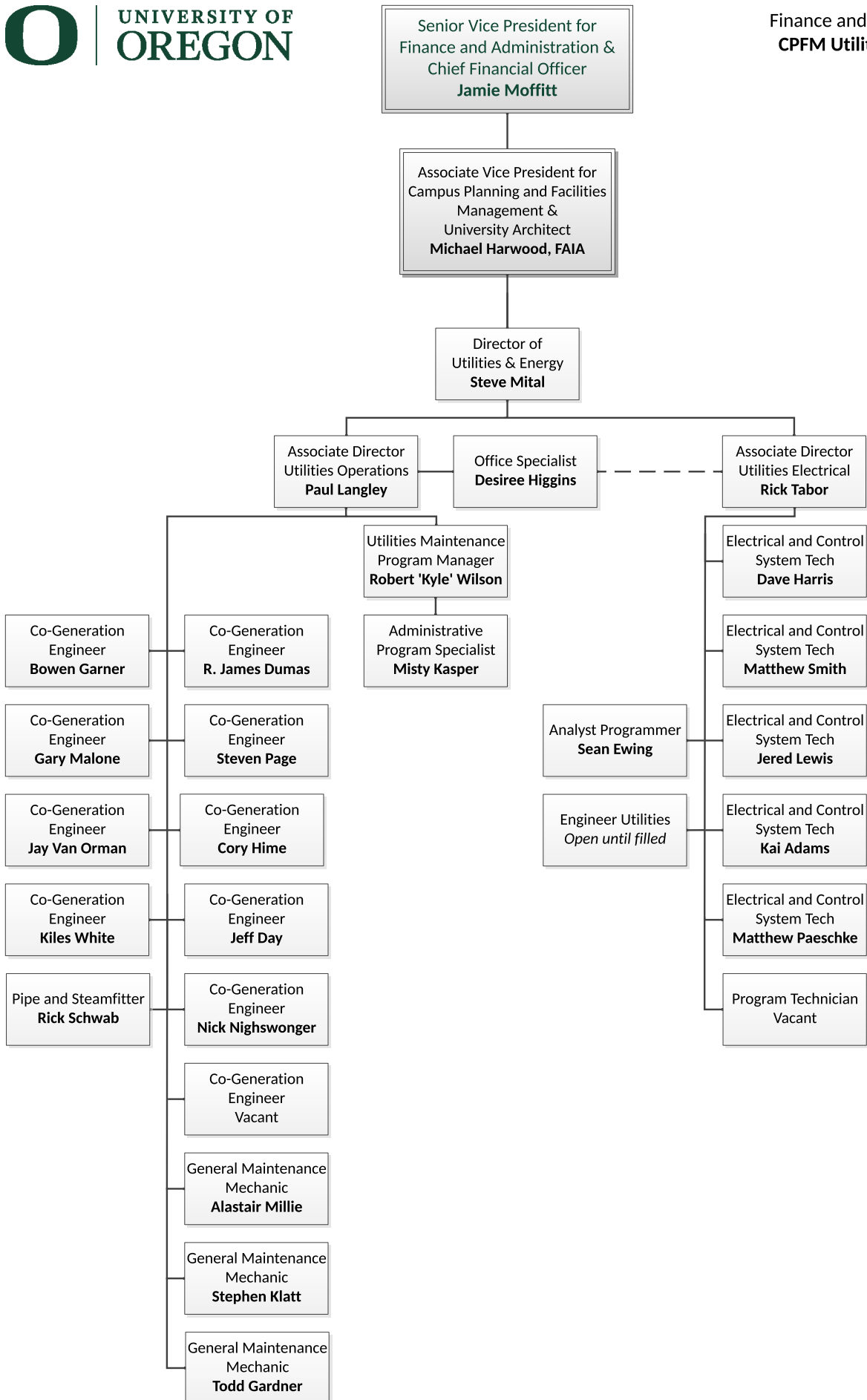


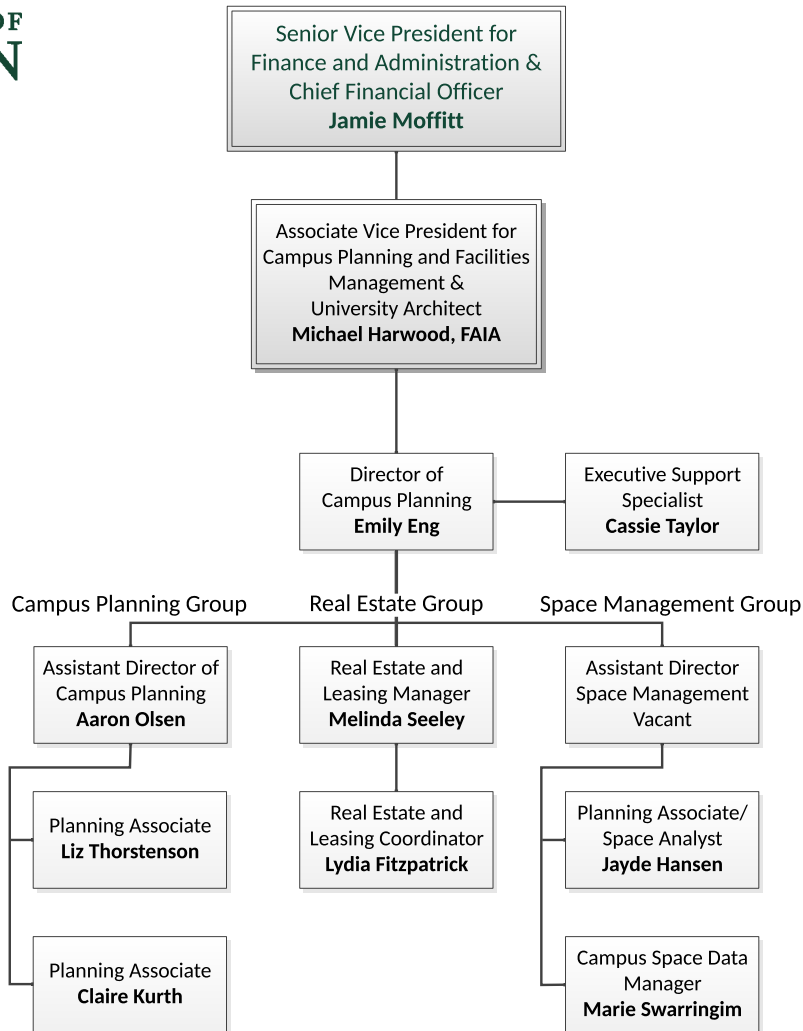












Senior Vice President for
Finance and Administration &
Chief Financial Officer
Jamie Moffitt

Associate Vice President for
Campus Planning and Facilities
Management &
University Architect
Michael Harwood, FAIA

Director of
Sustainability
Steve Mital

Assistant Director
Sarah Stoeckl

Campus Natural
Areas Steward
Emily Hamblen

Program Coordinator
Vacant

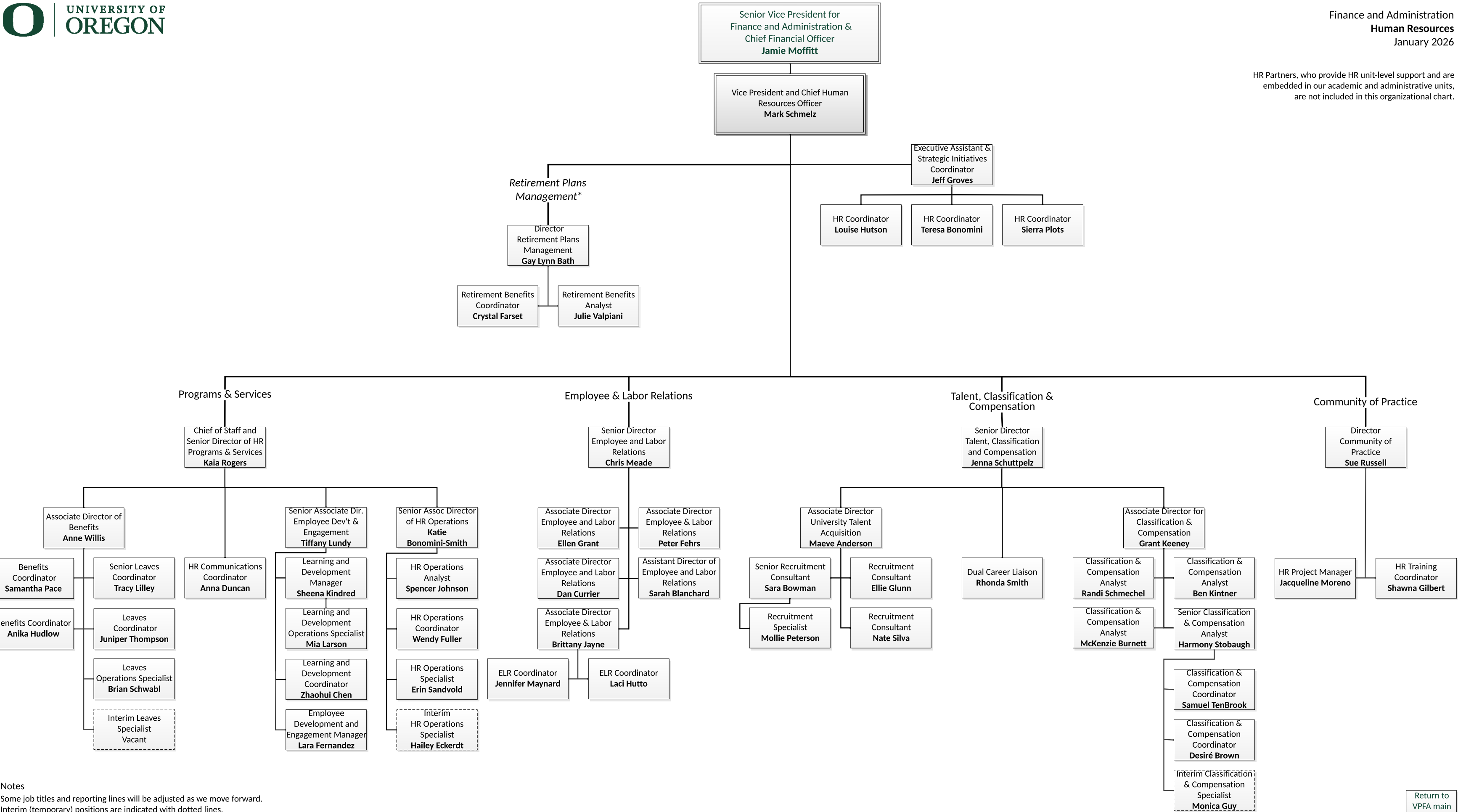
Program Assistant
Cimmeron Gillespie

Energy Analyst
Ryan Haag

Energy Program
Specialist
**Madeline
Jonas-Lowery**

[Return to
VPFA main
page](#)

HR Partners, who provide HR unit-level support and are embedded in our academic and administrative units, are not included in this organizational chart.

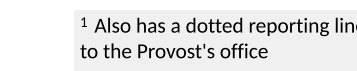


Notes

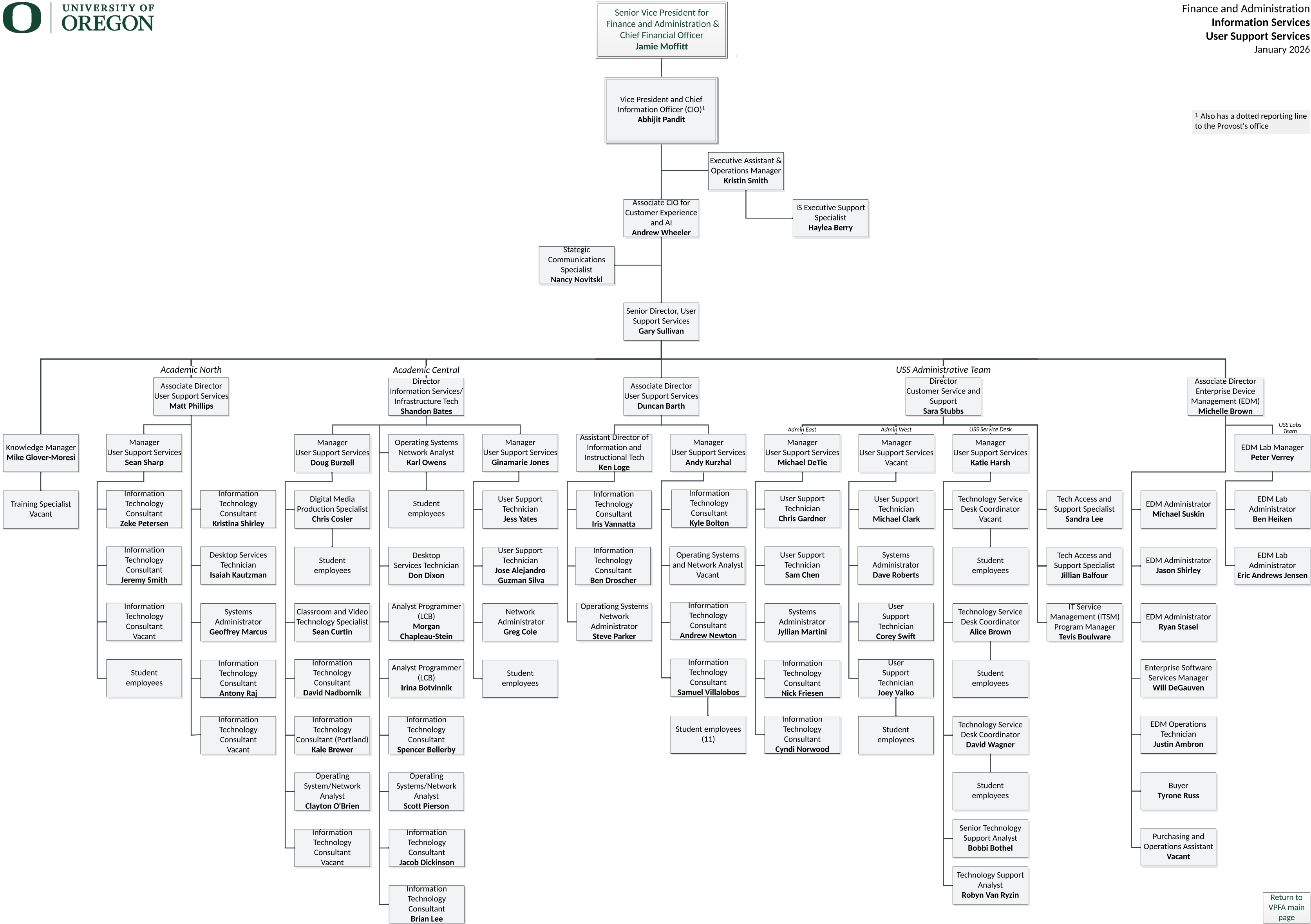
Some job titles and reporting lines will be adjusted as we move forward.

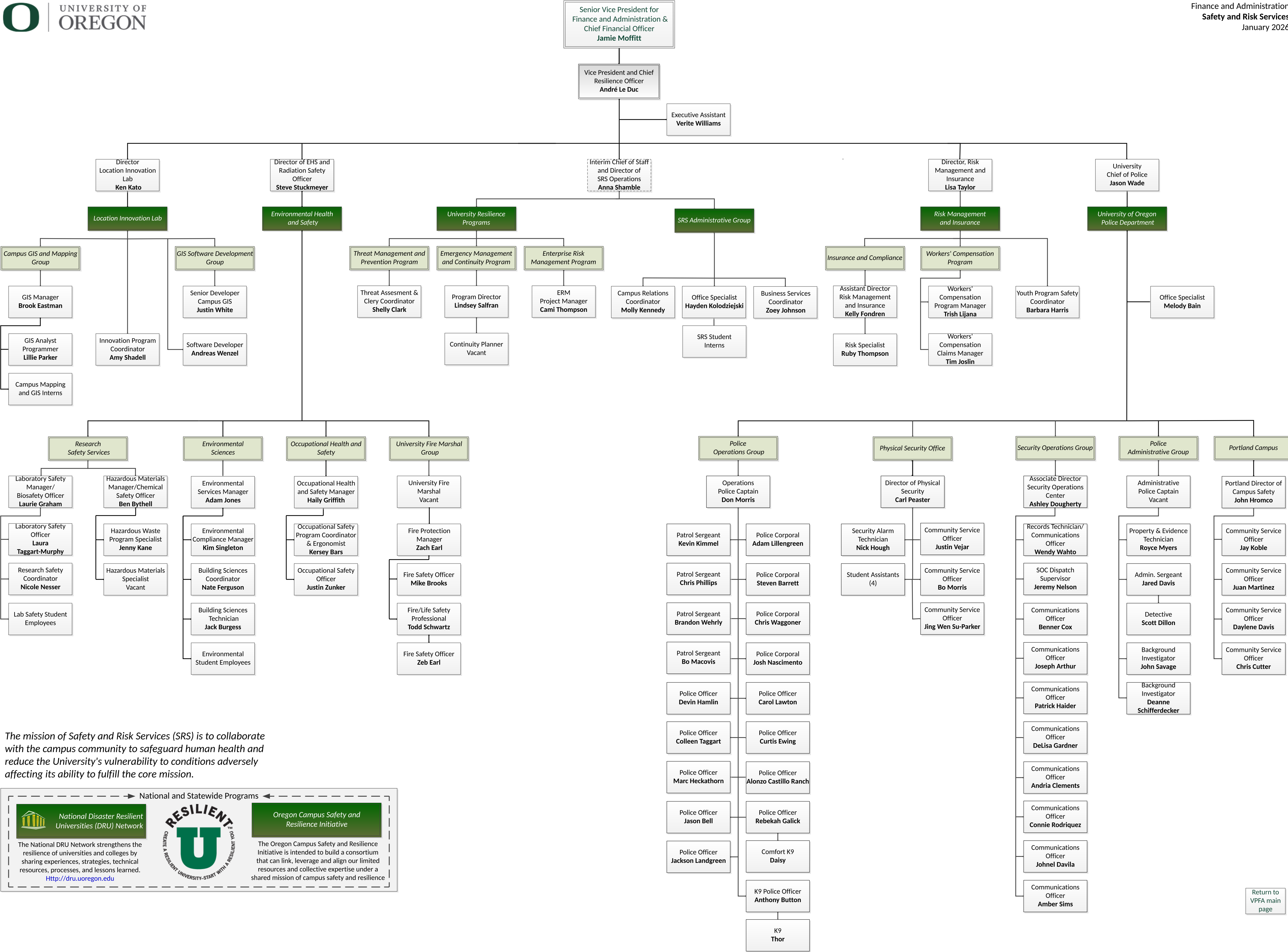
Interim (temporary) positions are indicated with dotted lines.

* Retirement Plans Management serves seven public higher education institutions in Oregon.




¹ Also has a dotted reporting line to the Provost's office






The mission of Safety and Risk Services (SRS) is to collaborate with the campus community to safeguard human health and reduce the University's vulnerability to conditions adversely affecting its ability to fulfill the core mission.



National Disaster Resilient Universities (DRU) Network

The National DRU Network strengthens the resilience of universities and colleges by sharing experiences, strategies, technical resources, processes, and lessons learned.

<http://dru.uoregon.edu>

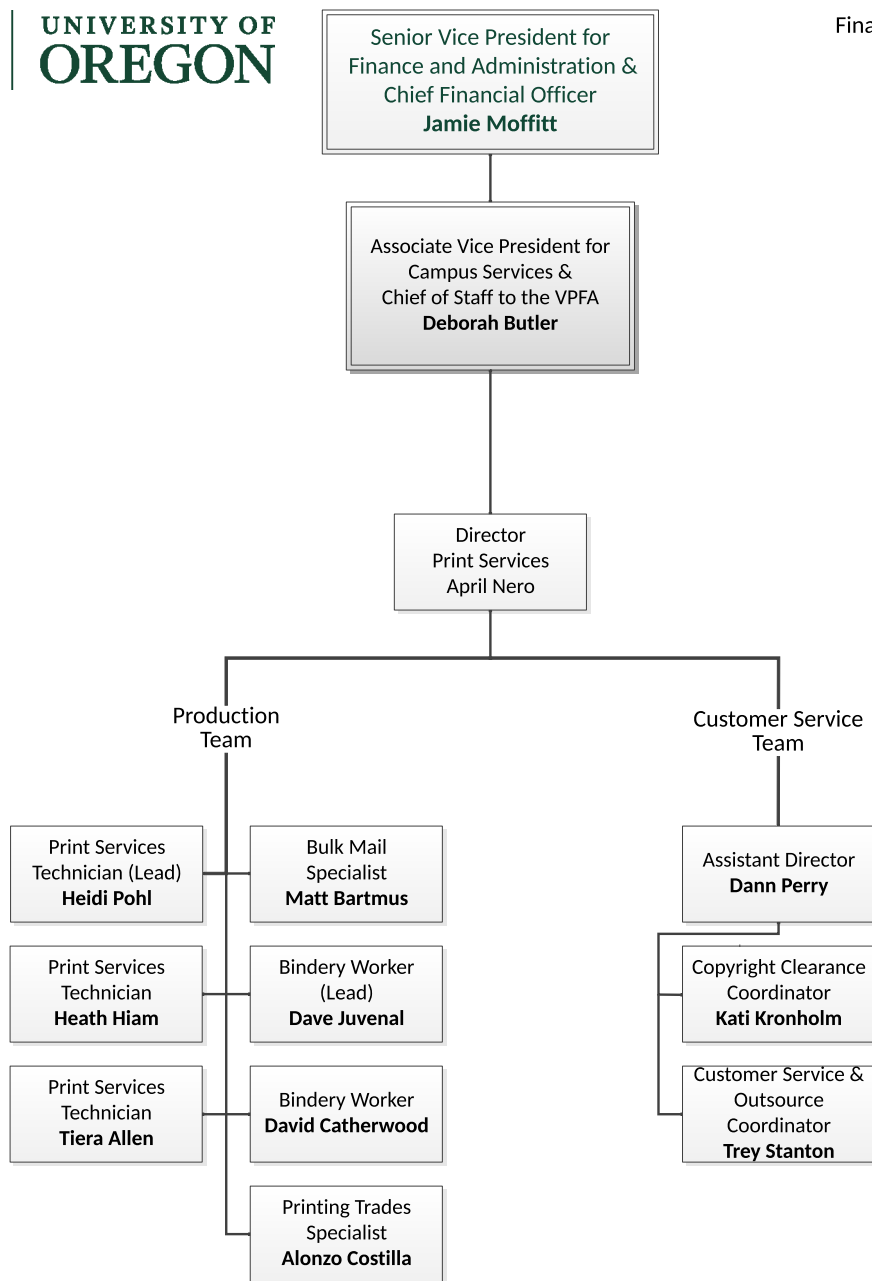


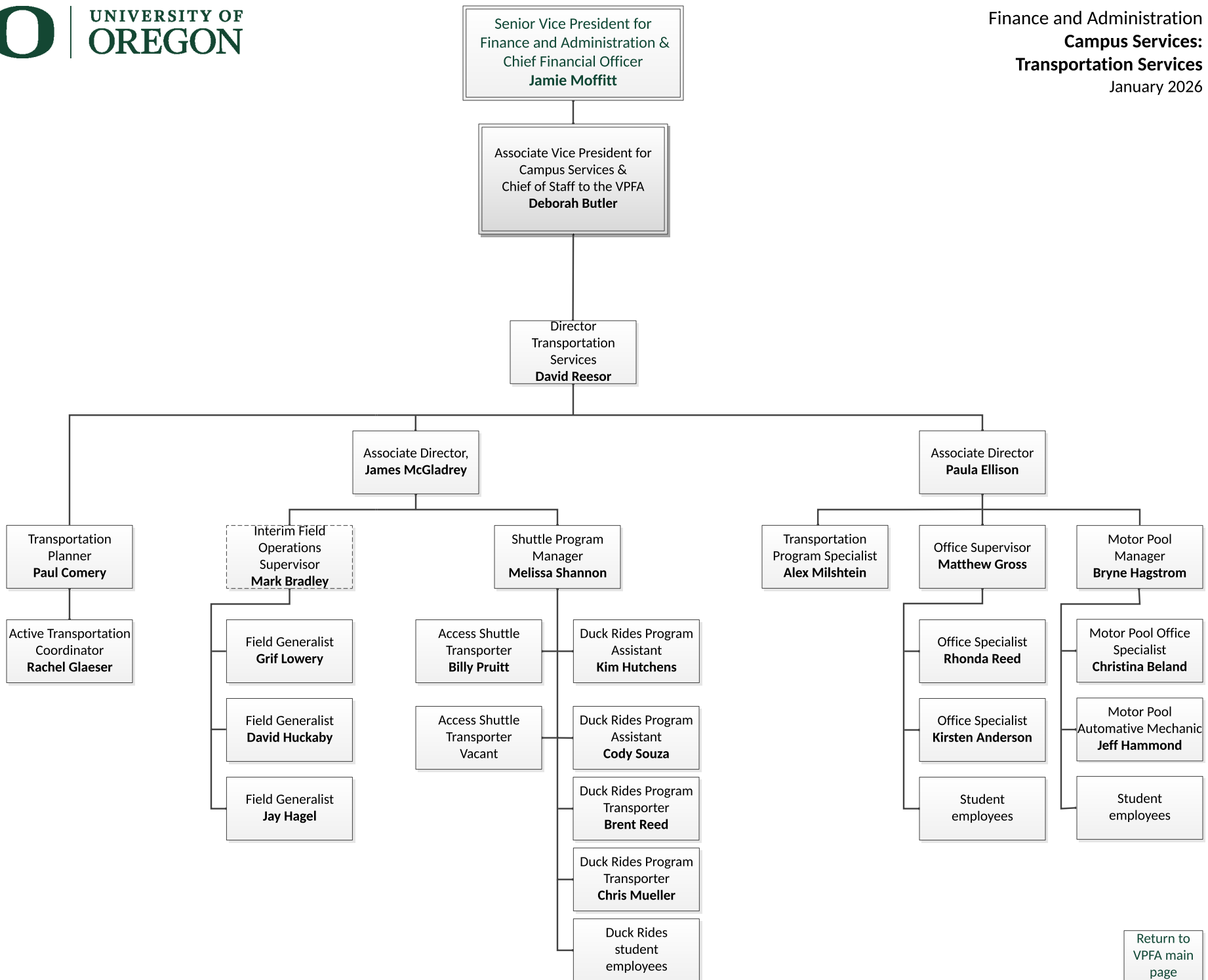
RESILIENT U

CREATE A RESILIENT UNIVERSITY-START WITH A RESILIENT YOU

Oregon Campus Safety and Resilience Initiative

The Oregon Campus Safety and Resilience Initiative is intended to build a consortium that can link, leverage and align our limited resources and collective expertise under a shared mission of campus safety and resilience





Senior Vice President for
Finance and Administration &
Chief Financial Officer
Jamie Moffitt

Associate Vice President for
Campus Services &
Chief of Staff to the VPFA
Deborah Butler

Director
Vivian Olum Child
Development Center
Tamara Clark

