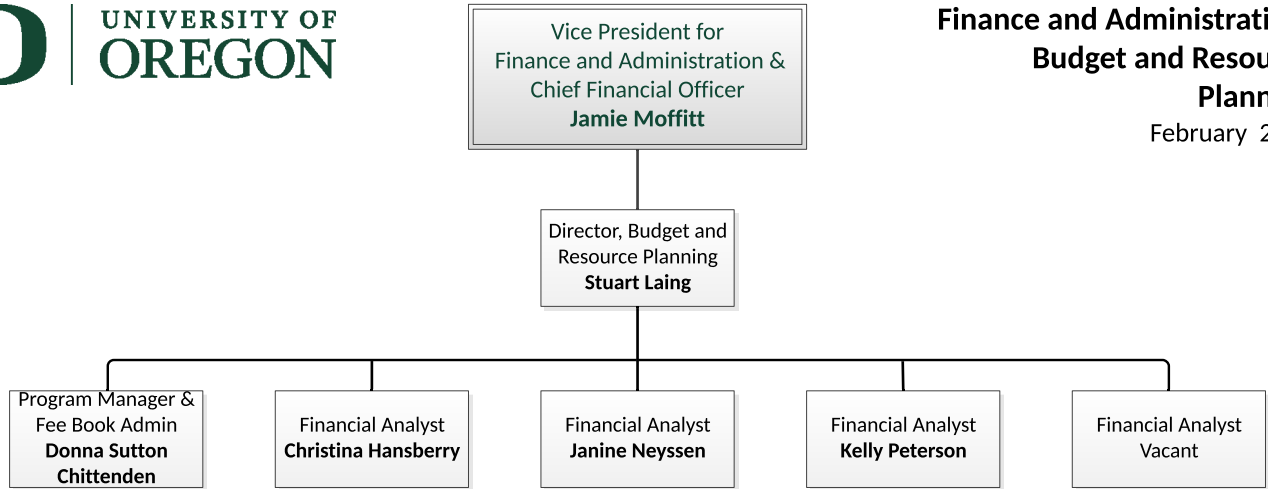




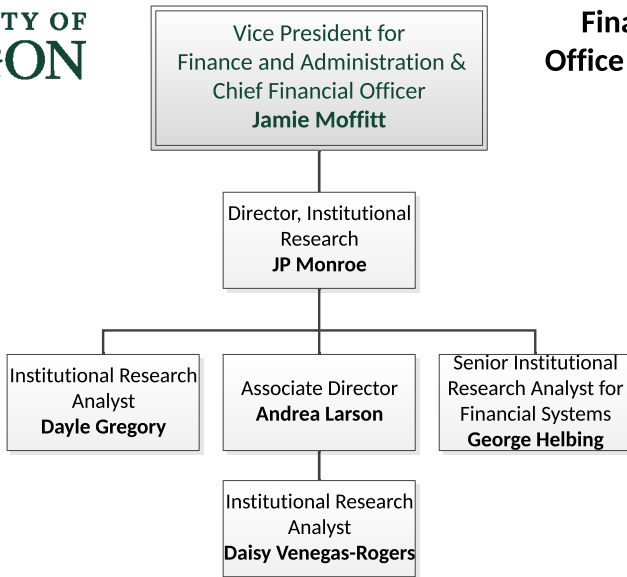
UNIVERSITY OF
OREGON

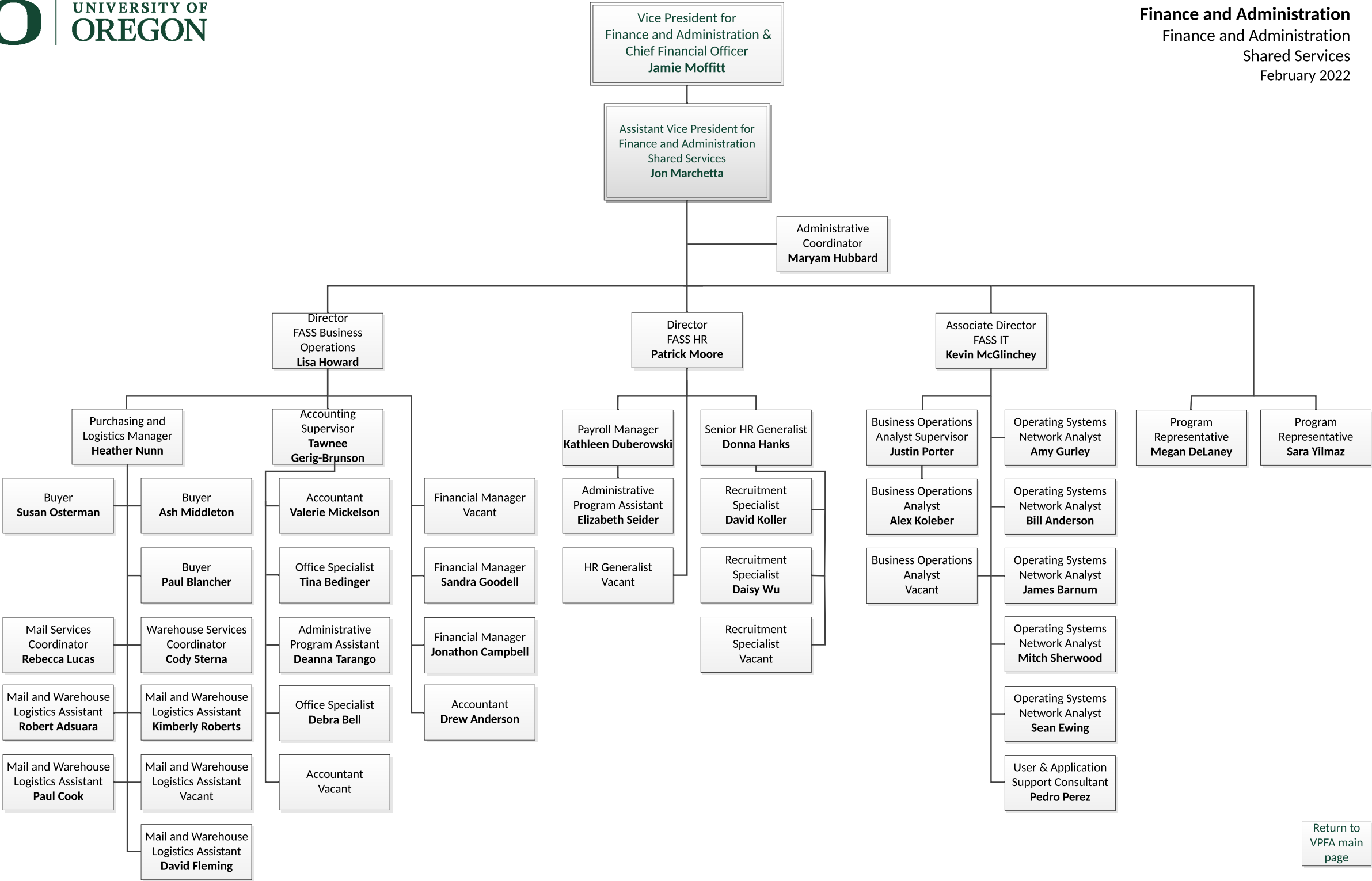
Finance and Administration: Budget and Resource Planning

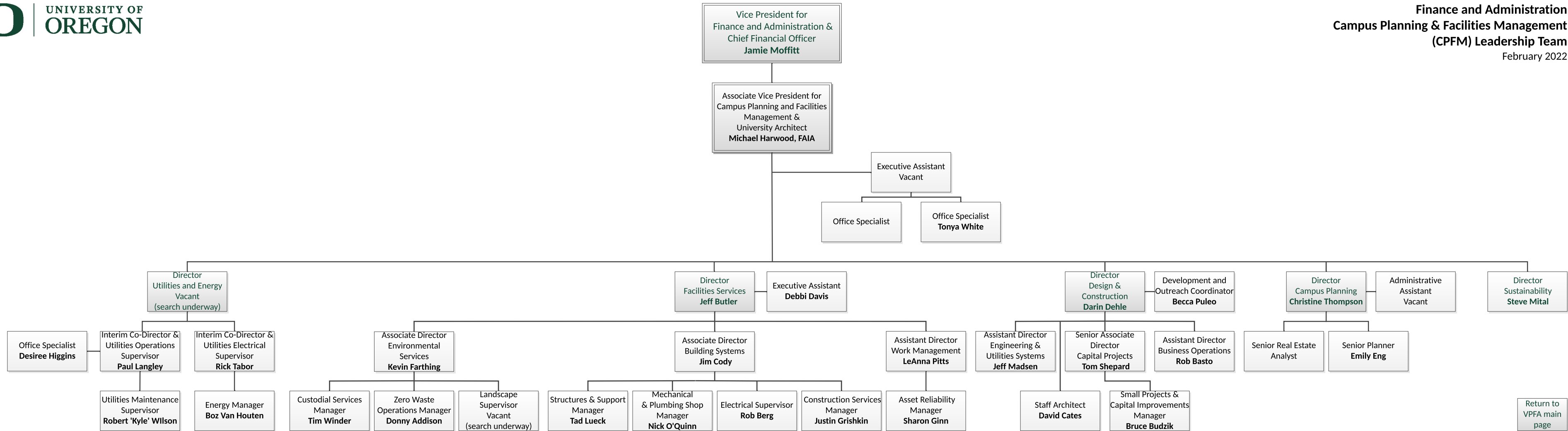
February 2022

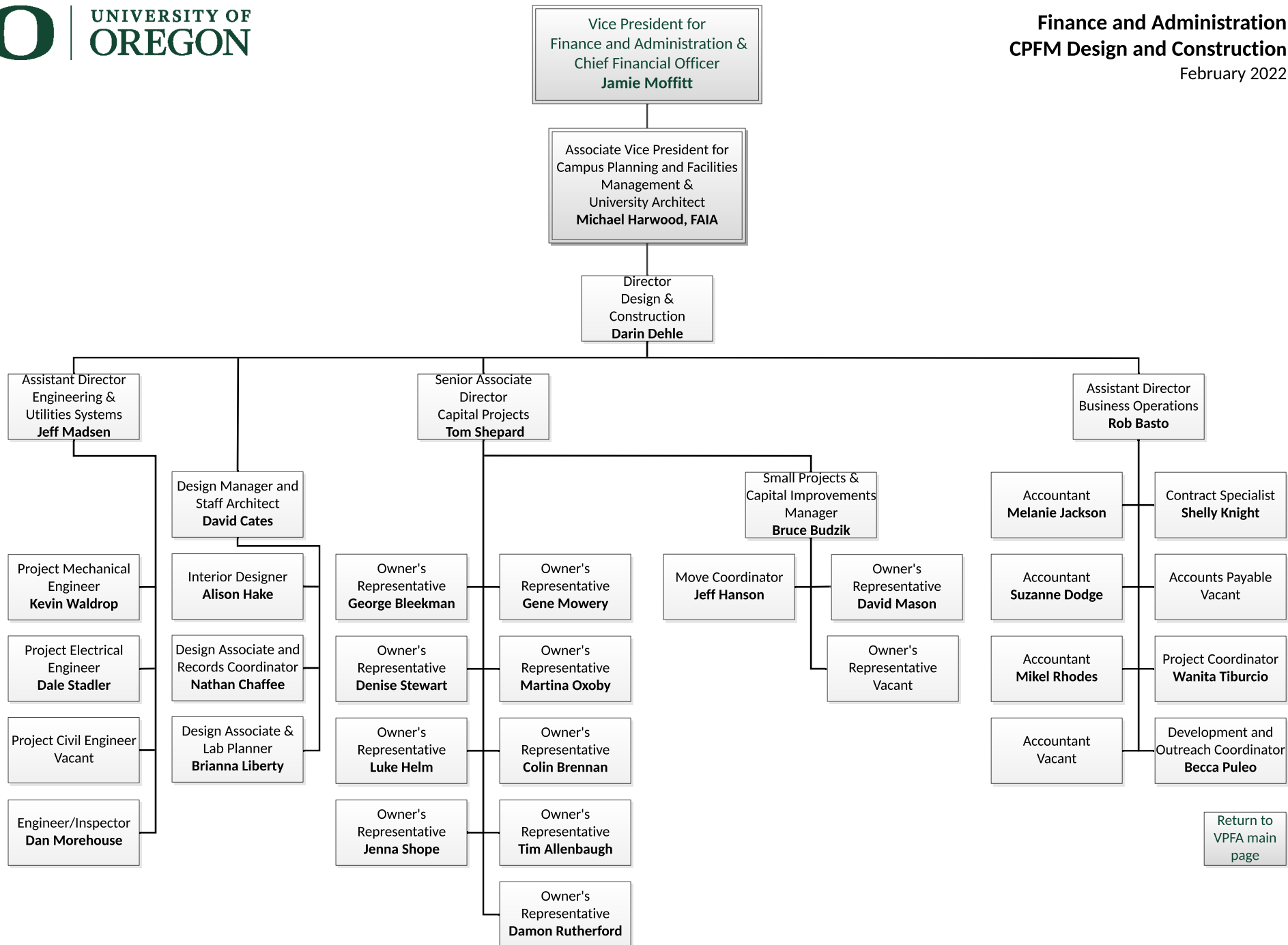


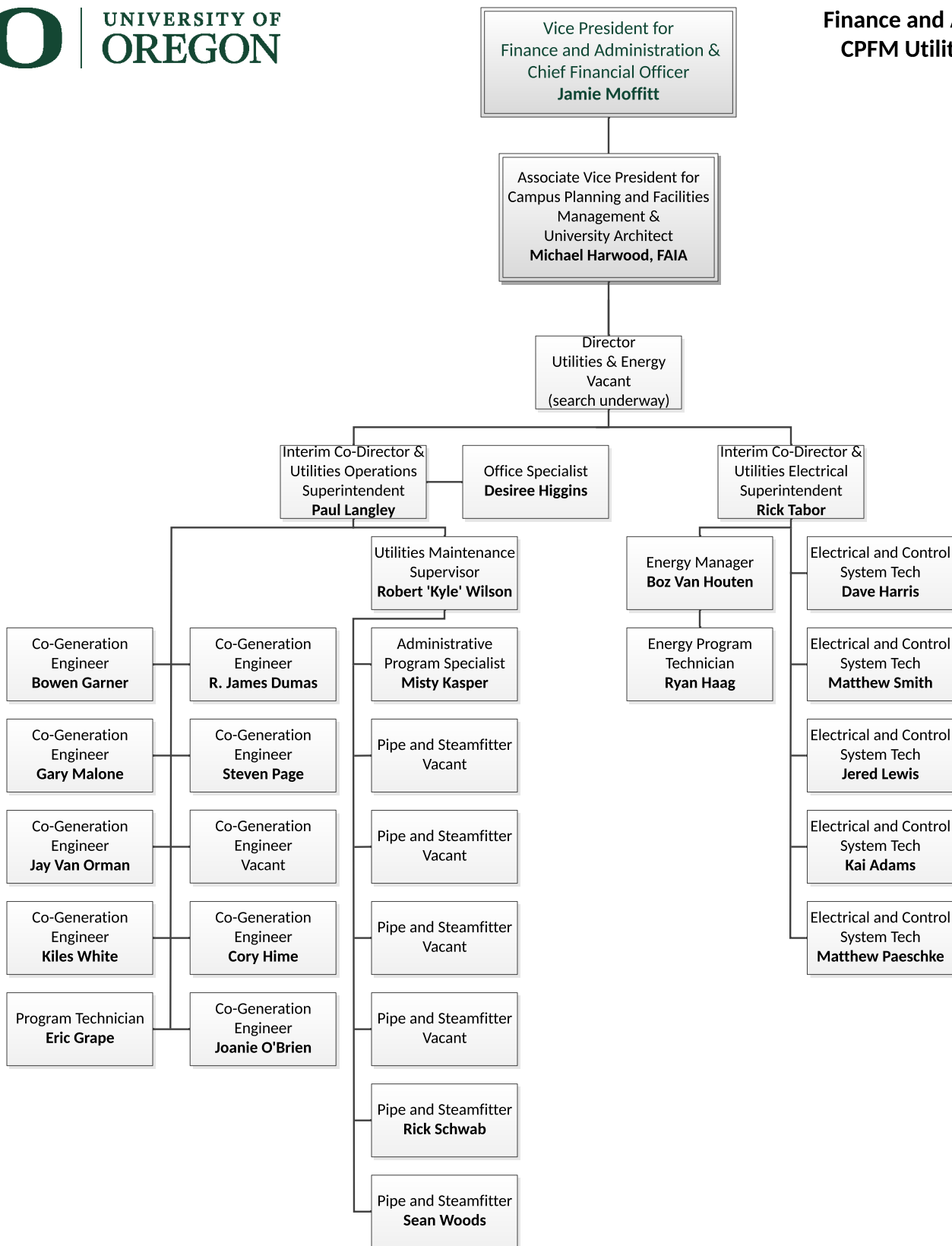
[Return to
VPFA main
page](#)

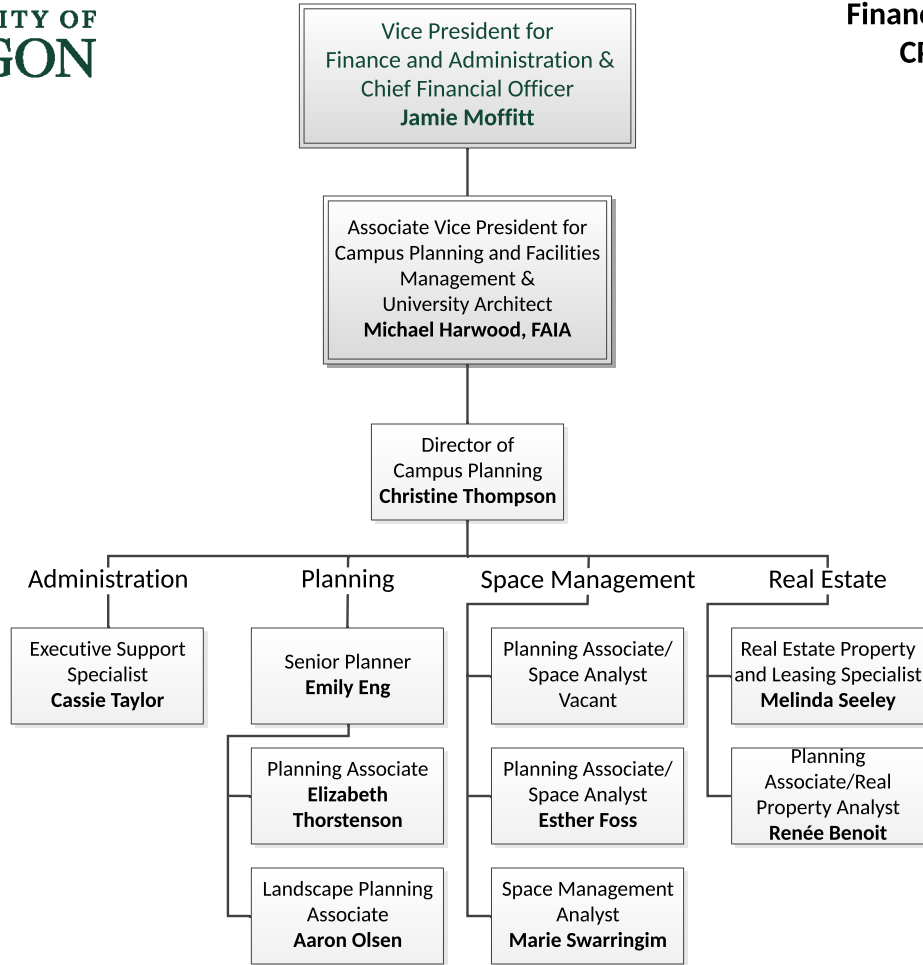


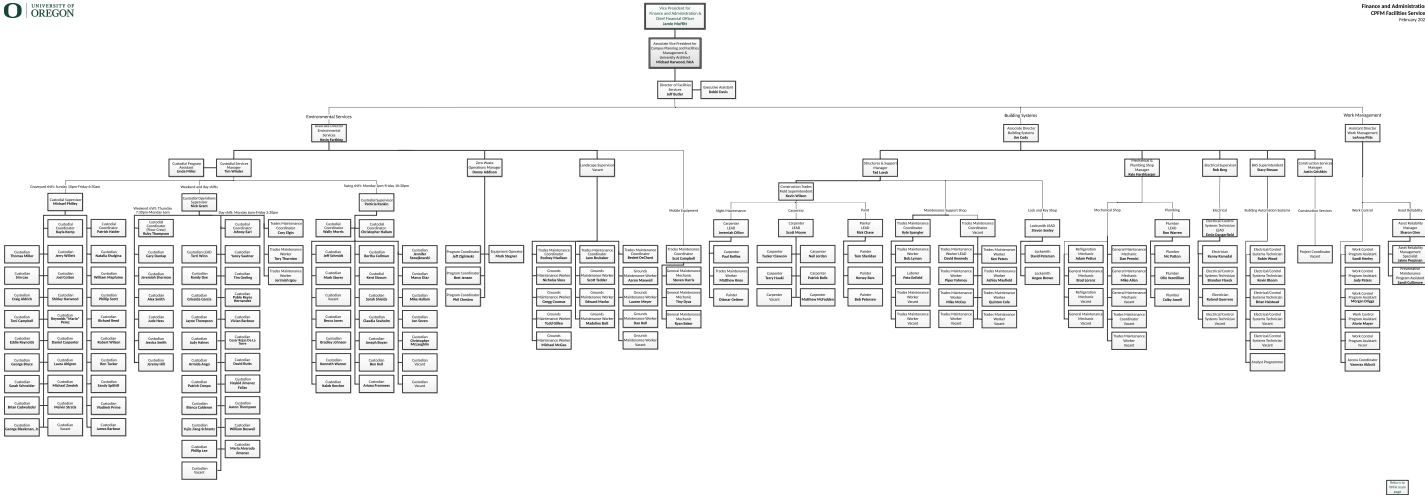










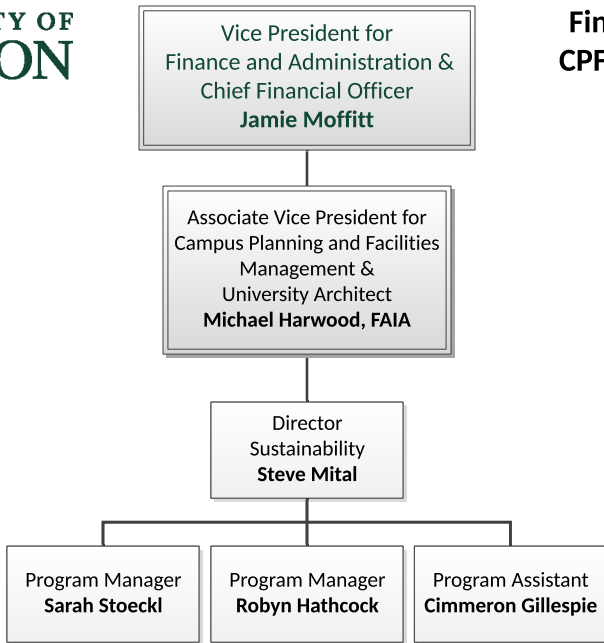




UNIVERSITY OF
OREGON

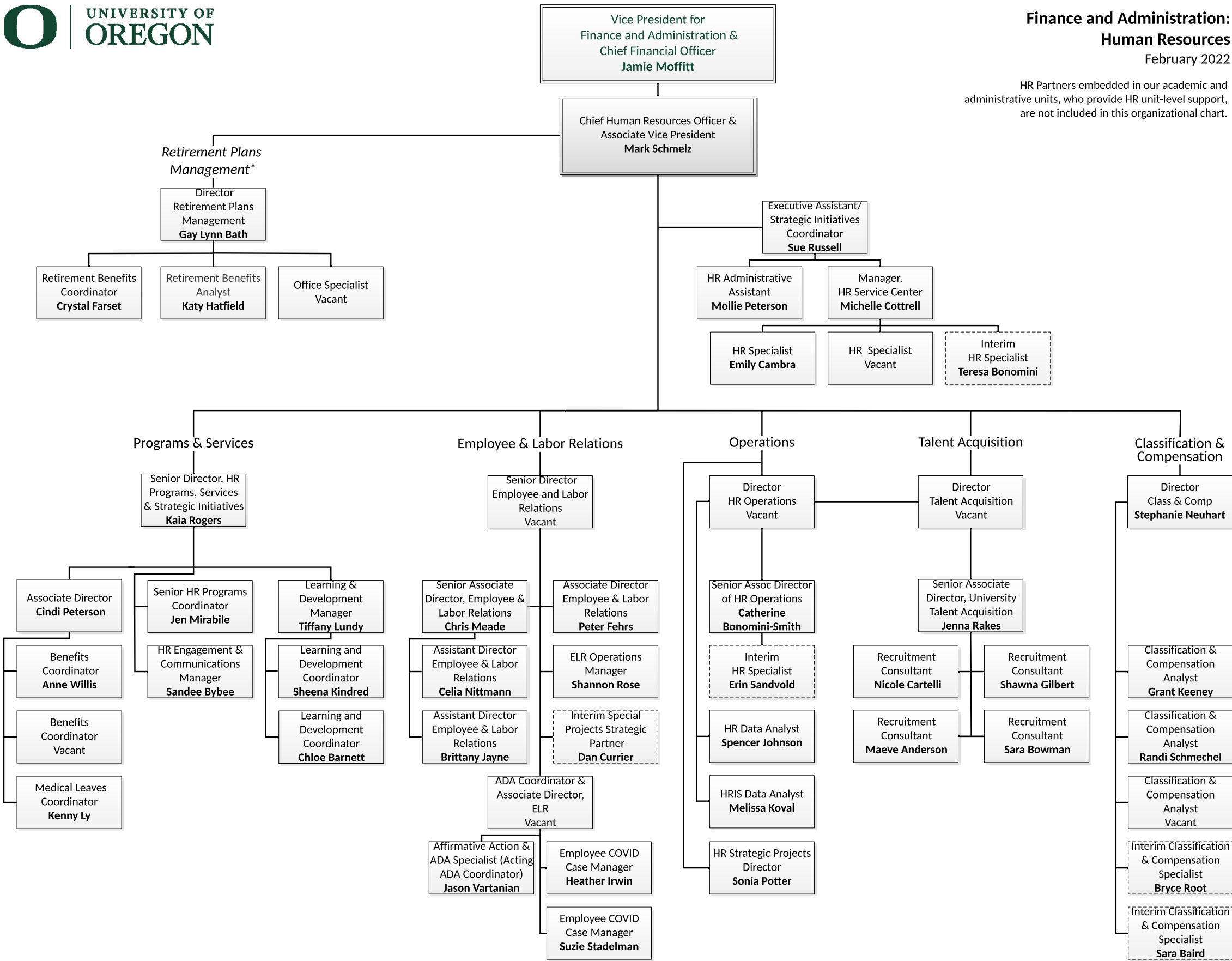
Finance and Administration: CPFM Office of Sustainability

February 2022

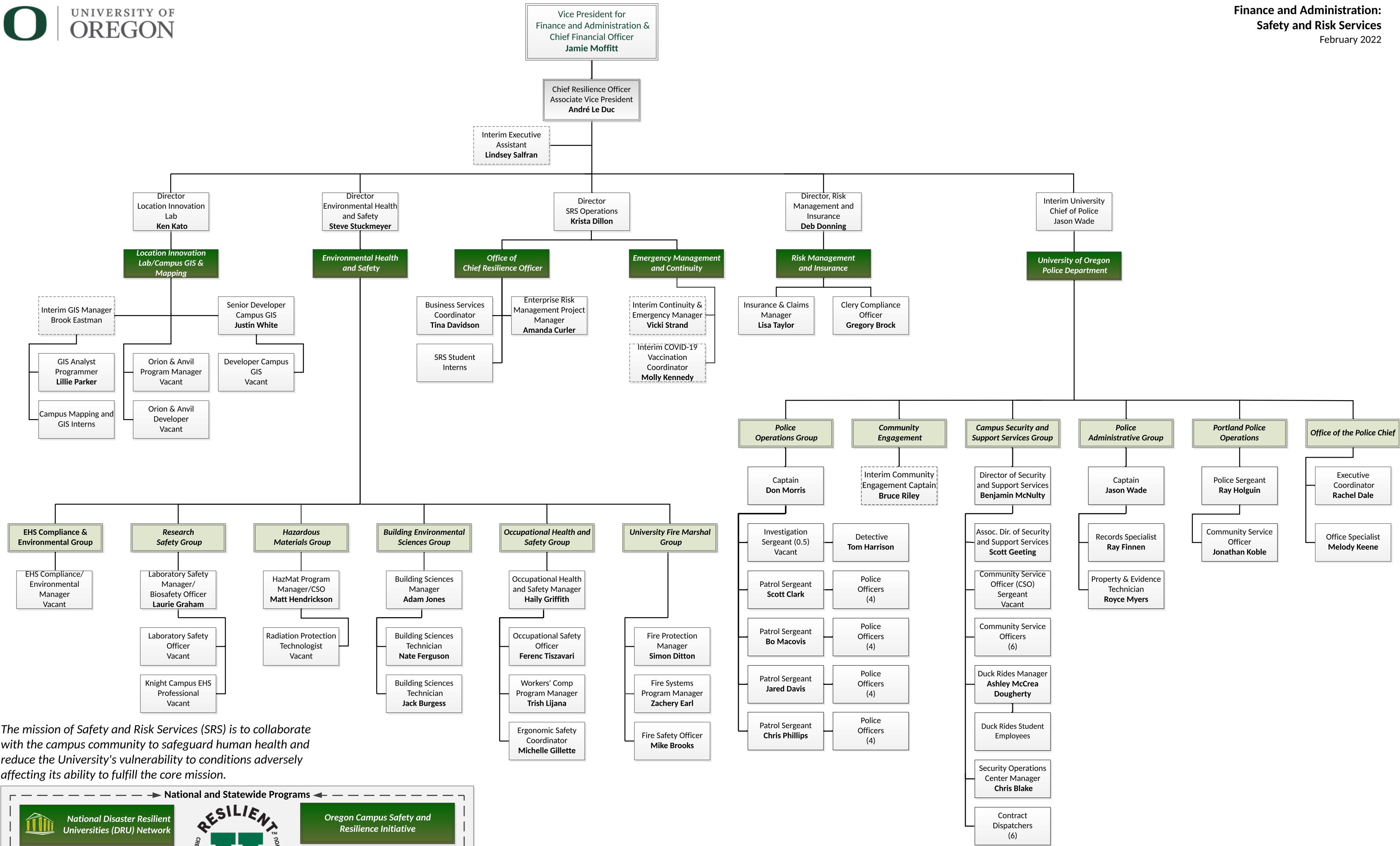


[Return to
VPFA main
page](#)

HR Partners embedded in our academic and administrative units, who provide HR unit-level support, are not included in this organizational chart.



Notes
Some job titles and reporting lines will be adjusted as we move forward. Interim (temporary) positions are indicated with dotted lines.
* Retirement Plans Management serves seven public higher education institutions in Oregon.



The mission of Safety and Risk Services (SRS) is to collaborate with the campus community to safeguard human health and reduce the University's vulnerability to conditions adversely affecting its ability to fulfill the core mission.

